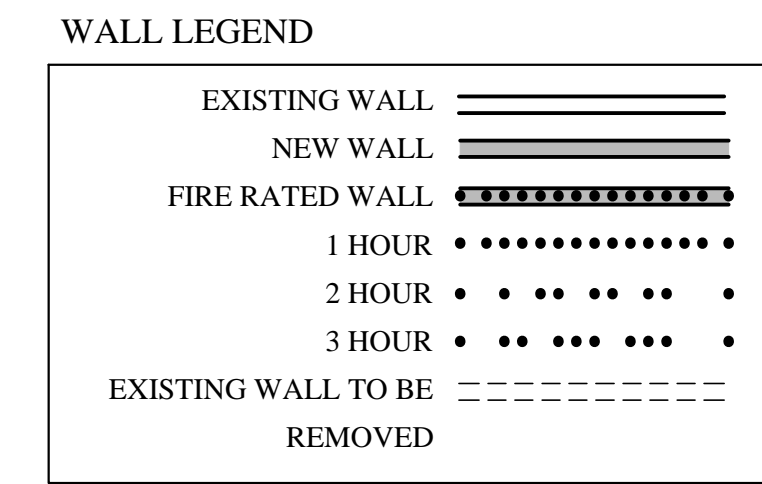


NFPA 101 2009 CODE DATA	
OCCUPANT LOAD	33 PEOPLE
USE GROUP CLASSIFICATION	APARTMENT
TYPE OF CONSTRUCTION	510.0.0 - UNPROTECTED
TOTAL AREA OF WORK	6,710 SF
ACTUAL BUILDING AREA	6,710 SF
BUILDING HEIGHT	(3) STORY
FIRE SUPPRESSION	NFPA 13R
EXIT ACCESS FIRE RATINGS:	
FIRE WALLS:	
PARTY WALLS	1 HOUR
STAIR ENCLOSURES	1 HOUR
SHAFTS	1 HOUR
EXIT ACCESS CORRIDORS	NONE
FIRE PROTECTION OF STRUCTURE:	
PRIMARY STRUCTURAL FRAME	N/A
LOAD BEARING WALLS - EXTERIOR	1 HOUR PER IBC FIRE SEPARATION
LOAD BEARING WALLS - INTERIOR	N/A
NON-LOAD BEARING WALLS - EXTERIOR	N/A
NON-LOAD BEARING WALLS - INTERIOR	N/A
FLOOR CONSTRUCTION	N/A
ROOF CONSTRUCTION	N/A
INTERIOR FINISHES:	WALLS AND CEILINGS: CLASS A, B OR C
FLOORS:	FLOORS: CLASS 1 OR 2
F.F.E. SHALL MEET NFPA 265 AND 701.	

IBC 2009 CODE DATA	
OCCUPANT LOAD	33 PEOPLE
USE GROUP CLASSIFICATION	R-2
TYPE OF CONSTRUCTION	5B - UNPROTECTED
TOTAL AREA OF WORK	6,710 SF
ACTUAL BUILDING AREA	6,710 SF
BUILDING HEIGHT	(3) STORIES
BUILDING AREA LIMITATION - SQ. FT. (TABLE 503)	EXISTING TO REMAIN
BUILDING HEIGHT LIMITATION - STORIES (TABLE 503)	EXISTING TO REMAIN
STREET FRONTAGE INCREASE (150%) - SQ. FT.	N/A
AUTOMATIC SPRINKLER SYSTEM AREA INCREASE (300%) - SQ. FT.	N/A
AUTOMATIC SPRINKLER SYSTEM HEIGHT INCREASE	N/A
FIRE SUPPRESSION:	PROPOSED NFPA 13R
EXIT ACCESS FIRE RATINGS:	
FIRE WALLS:	
PARTY WALLS	1 HOUR
STAIR ENCLOSURES	1 HOUR
SHAFTS	2 HOUR & 1 HOUR (SEE PLAN)
EXIT ACCESS CORRIDORS	NONE
FIRE PROTECTION OF STRUCTURE:	
PRIMARY STRUCTURAL FRAME	N/A
LOAD BEARING WALLS - EXTERIOR	1 HOUR PER FIRE SEPARATION DISTANCE
LOAD BEARING WALLS - INTERIOR	N/A
NON-LOAD BEARING WALLS - EXTERIOR	N/A
NON-LOAD BEARING WALLS - INTERIOR	N/A
FLOOR CONSTRUCTION	N/A
ROOF CONSTRUCTION	N/A
OCCUPANT LOAD:	6,710 SF / 200 SF / PERSON = 33 PEOPLE



**LIGHTING NOTES:**  
 1. ALL FIXTURES SHALL BE SURFACE MOUNT OVER THE ONE HOUR FIRE RATED FLOOR/CEILING ASSEMBLIES @ THE LIVING UNITS. TYP. AT THE LOWER LEVEL STORAGE ROOM.  
 2. RECESS LIGHT FIXTURES SHALL BE SET IN FIRE RATED HOUSINGS, PRE-MANUFACTURED OR SITE BUILT TO MATCH THE FIRE RATING OF THE ASSEMBLY.

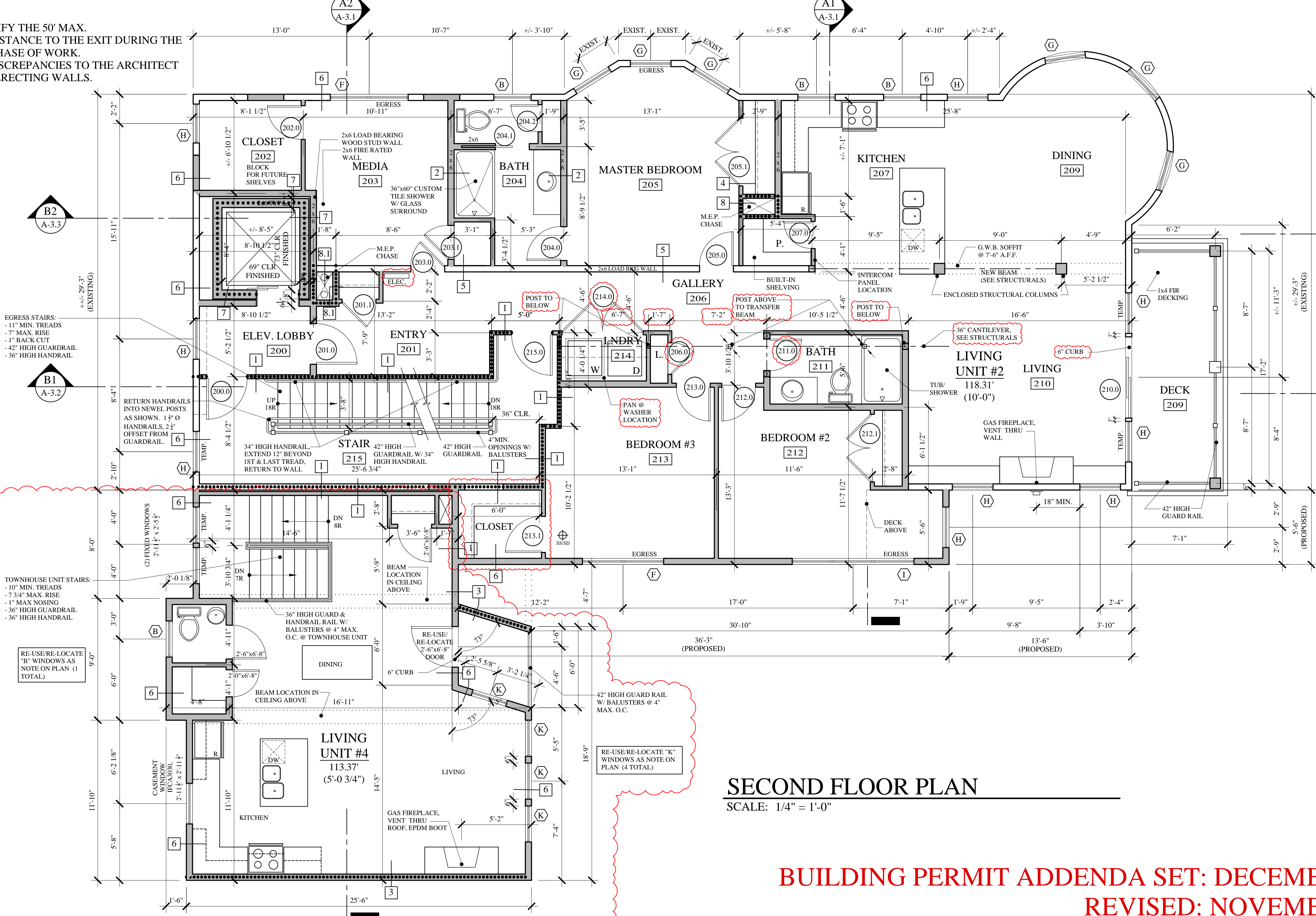
### 2ND FLOOR TRAVEL DISTANCE

SCALE: 1/8" = 1'-0"

NOTE: THE DESIGN INCLUDES A SINGLE EXIT FROM THE SECOND AND THIRD FLOORS. THE PROJECT MEETS THE FOLLOWING REQUIREMENTS FOR EXITING:

IBC: TABLE 1021.2, STORIES WITH ONE EXIT. PROJECT MEETS THE REQUIREMENTS FOR R-2 SECOND AND THIRD FLOOR BY MEETING THE MAXIMUM 50' TRAVEL DISTANCE. THE BUILDING IS SPRINKLER PER NFPA 13R AND CONTAINS EMERGENCY ESCAPE OPENINGS PER THE PLAN.

NFPA: A SINGLE EXIT IS ALLOWED PER SECTION 30.2.4.4, NUMBER OF EXITS IN THE APARTMENT CHAPTER. EXIT FROM EACH OF THE UPPER UNITS MEET THE 35' TRAVEL DISTANCE FROM THE UNIT ENTRY DOOR TO THE EXIT ENCLOSURE. ACTUAL DISTANCE PROVIDED: ZERO



### SECOND FLOOR PLAN

SCALE: 1/4" = 1'-0"

**BUILDING PERMIT ADDENDA SET: DECEMBER 31, 2014**  
**REVISED: NOVEMBER 28, 2014**  
**CONSTRUCTION SET: AUGUST 11, 2014**



**MARK MUELLER ARCHITECTS**  
 A.I.A.  
 100 Commercial Street  
 Suite 205  
 Portland, Maine 04101  
 Phone: 207.774.9057  
 Email: rfi@muellerarchitects.com

**PROPOSED RENOVATIONS @:**  
**130 EASTERN PROMENADE**  
 FOR: 130 EASTERN PROMENADE LLC  
 110 MARGINAL WAY  
 PORTLAND, MAINE 04101

SECOND FLOOR PLAN

Revision 1: 11.28.14  
 SK-1: Coordination & Clarifications

DATE: 02/24/2011  
 PROJECT: 130 E. PROM  
 DRAWN BY: MRP  
 CHECK BY: MAM

A-1.2