



**MARK
MUELLER
ARCHITECTS**

A.I.A.

100 Commercial Street
Suite 205
Portland, Maine 04101
Phone: 207.774.9057
Email:
rfi@muellerarchitects.com

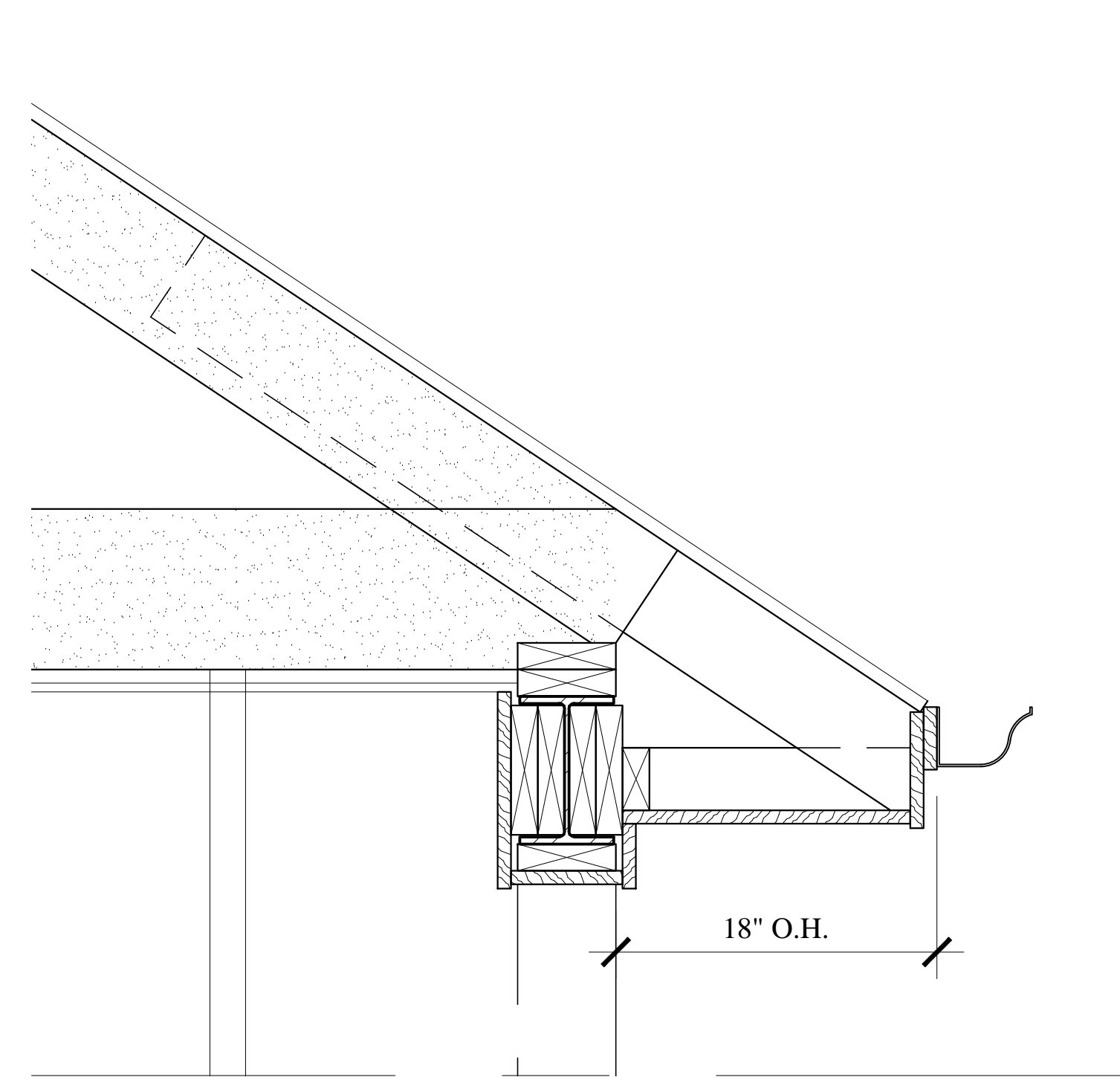
© COPYRIGHT 2013
MARK MUELLER ARCHITECTS

PROPOSED RENOVATIONS @:
130 EASTERN PROMENADE
FOR: 130 EASTERN PROMENADE LLC
110 MARGINAL WAY
PORTLAND, MAINE 04101

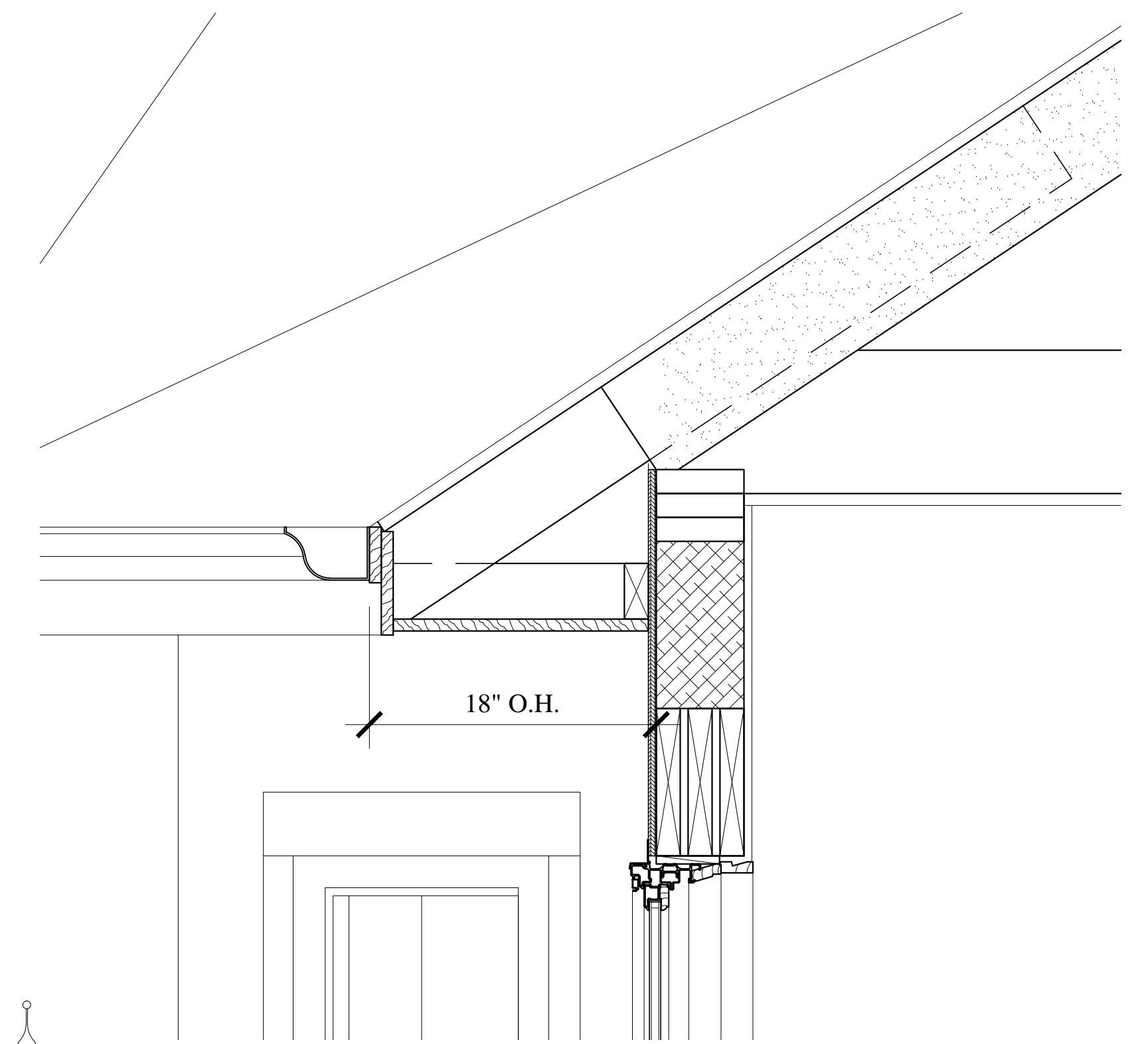
BUILDING SECTIONS

REVISIONS
DATE 02/24/2011
PROJECT 130 E. PROM.
DRAWN BY MRP
CHECK BY MAM

A-3.2

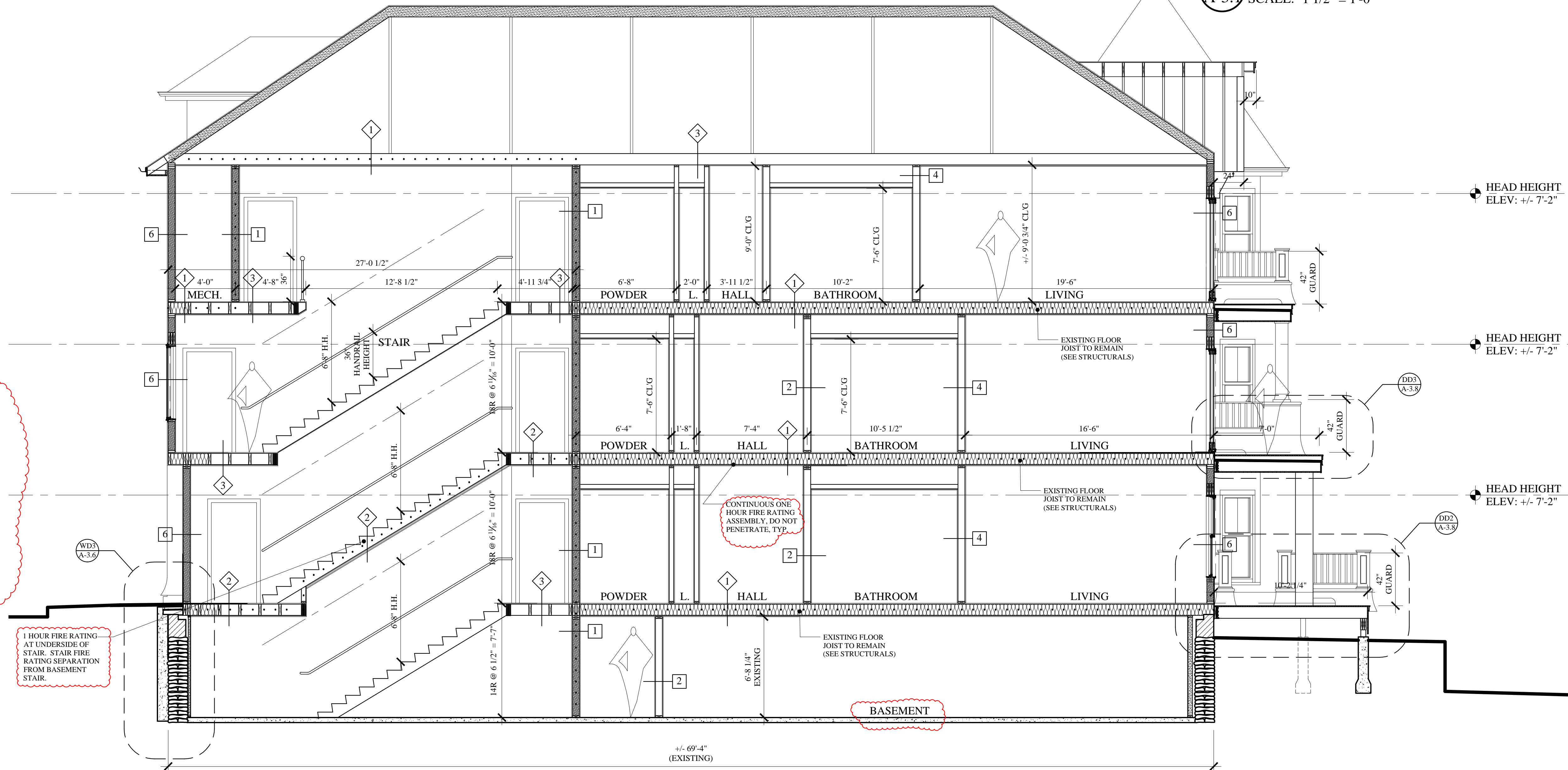


FD2 FASCIA DETAIL
A-3.1 SCALE: 1 1/2" = 1'-0"



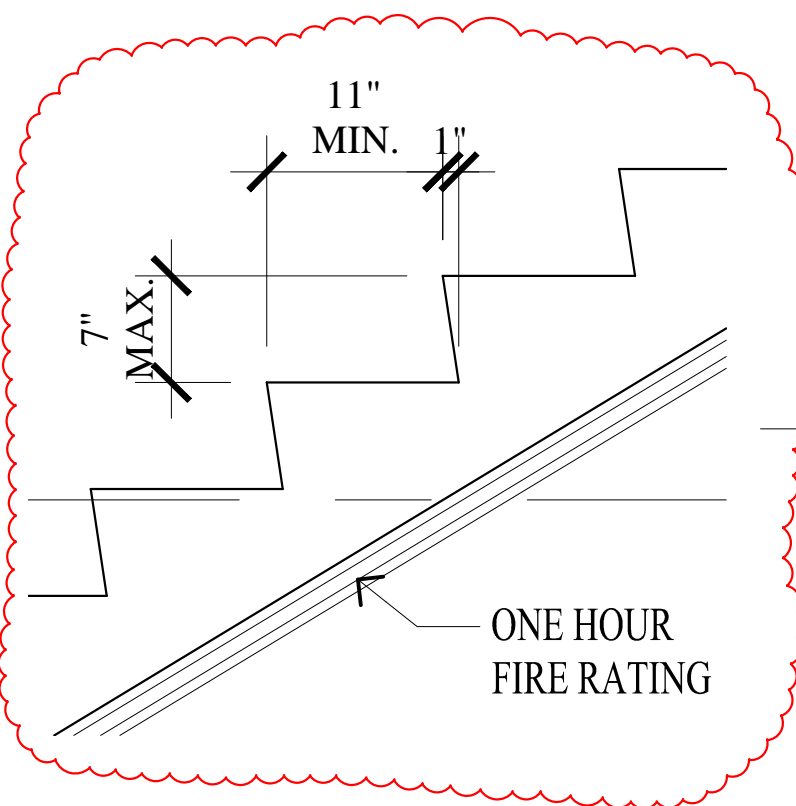
FD1 FASCIA DETAIL
A-3.1 SCALE: 1 1/2" = 1'-0"

INSULATION:
- SLOPED ROOFS: R38
- WALLS: DRY DENSE PACK CELLULOSE = R21
- FLAT ROOFS (OVER HEATED SPACE): CLOSED CELL SPRAY FOAM = R49
- FOUNDATION WALLS & SLAB: 3" RIGID = R15 (AS NOTED)
- FLOORS: FULL THICKNESS SOUND ATTENUATION INSULATION (AS NOTED)
- BATHS & LAUNDRY (FLOORS & WALLS): FULL THICKNESS FGLASS
- SEAL ALL DISSIMILAR MATERIALS WITH NON-HARDING THERMAL SEALANT PER 2009 IECC REQUIREMENTS



B1 BUILDING SECTION
A-1.0 SCALE: 1/4" = 1'-0"

REVISION: JULY 18, 2014
PERMIT SET: MAY 23, 2014



ONE HOUR FIRE RATING
AT UNDERSIDE OF STAIR. STAIR FIRE RATING SEPARATION FROM BASEMENT STAIR.

CONTINUOUS ONE HOUR FIRE RATING ASSEMBLY. DO NOT PENETRATE TYP.