

NOTE:
FIELD VERIFY THE 50' MAX.
TRAVEL DISTANCE TO THE EXIT DURING THE
LAYOUT PHASE OF WORK.
REPORT DISCREPANCIES TO THE ARCHITECT
PRIOR TO ERECTING WALLS.

NOTE: THE DESIGN INCLUDES A SINGLE
EXIT FROM THE SECOND AND THIRD FLOORS.
THE PROJECT MEETS THE FOLLOWING
REQUIREMENTS FOR EXITING:

IBC: TABLE 1021.2, STORIES WITH ONE EXIT.
PROJECT MEETS THE REQUIREMENTS FOR R-2
SECOND AND THIRD FLOOR BY MEETING THE
MAXIMUM 50' TRAVEL DISTANCE.
THE BUILDING IS SPRINKLER PER NFPA 13R AND
CONTAINS EMERGENCY ESCAPE OPENINGS PER
THE PLAN.

NFPA: A SINGLE EXIT IS ALLOWED PER SECTION
30.2.4.4, NUMBER OF EXITS IN THE APARTMENT
CHAPTER. EXIT FROM EACH OF THE UPPER
UNITS MEET THE 35' TRAVEL DISTANCE FROM
THE UNIT ENTRY DOOR TO THE EXIT
ENCLOSURE.
ACTUAL DISTANCE PROVIDED: ZERO

NFPA 101 2009 CODE DATA	
OCCUPANT LOAD	33 PEOPLE
USE GROUP CLASSIFICATION	APARTMENT
TYPE OF CONSTRUCTION	510.0.0 - UNPROTECTED
TOTAL AREA OF WORK	6,710 SF
ACTUAL BUILDING AREA	6,710 SF
BUILDING HEIGHT	(3) STORY
FIRE SUPPRESSION	NFPA 13R
EXIT ACCESS FIRE RATINGS:	
FIRE WALLS	1 HOUR
PARTY WALLS	1 HOUR
STAIR ENCLOSURES	1 HOUR
SHAFTS	1 HOUR
EXIT ACCESS CORRIDORS	NONE
FIRE PROTECTION OF STRUCTURE:	
PRIMARY STRUCTURAL FRAME	N/A
LOAD BEARING WALLS - EXTERIOR	1 HOUR PER IBC FIRE SEPARATION
LOAD BEARING WALLS - INTERIOR	N/A
NON-LOAD BEARING WALLS - EXTERIOR	N/A
NON-LOAD BEARING WALLS - INTERIOR	N/A
FLOOR CONSTRUCTION	N/A
ROOF CONSTRUCTION	N/A
INTERIOR FINISHES:	WALLS AND CEILINGS: CLASS A, B OR C
FLOORS:	CLASS 1 OR 2
F.F.E. SHALL MEET NFPA 265 AND 701.	

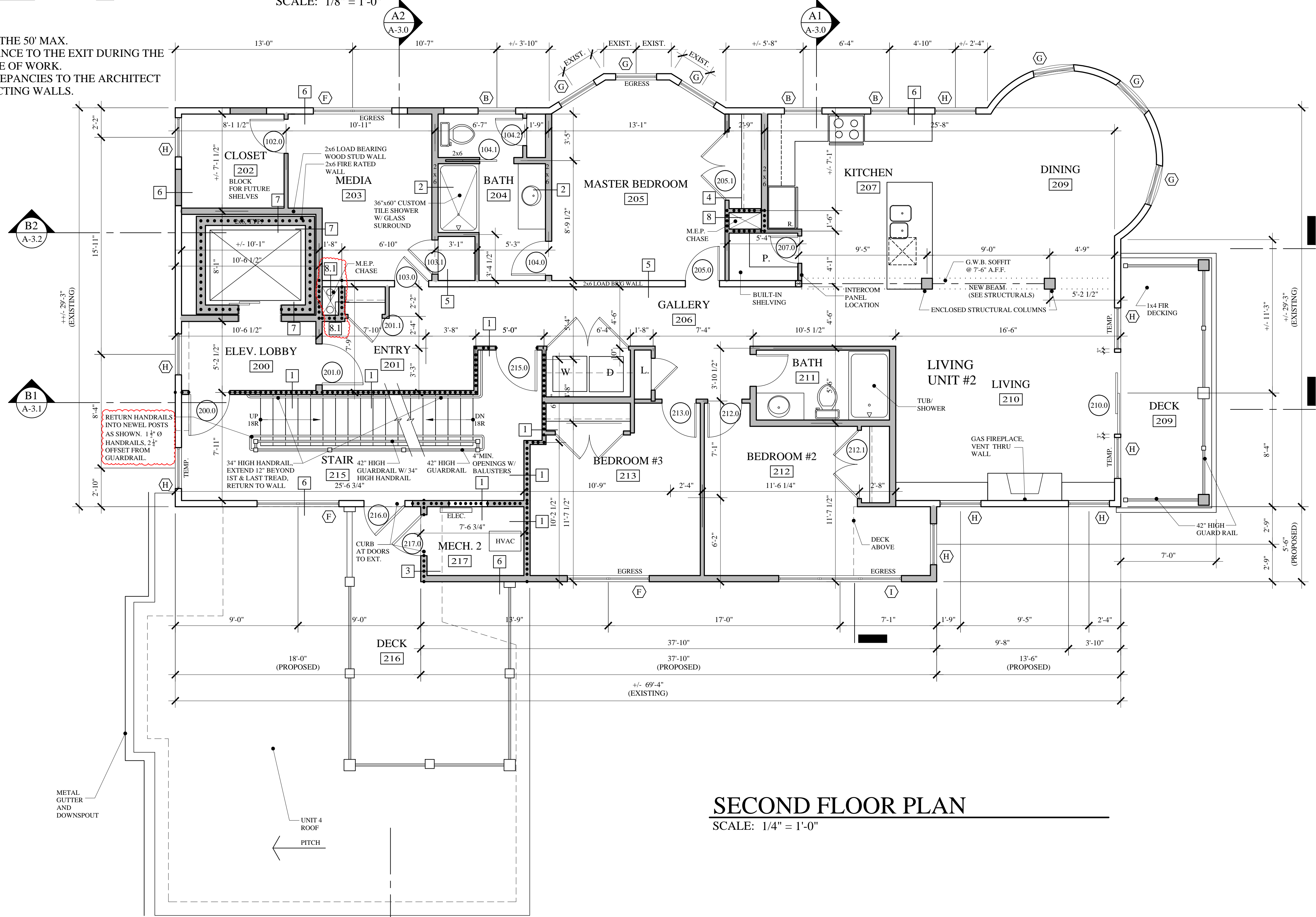
2ND FLOOR CORRIDOR TRAVEL DISTANCE

SCALE: 1/8" = 1'-0"

IBC 2009 CODE DATA	
OCCUPANT LOAD	33 PEOPLE
USE GROUP CLASSIFICATION	R-2
TYPE OF CONSTRUCTION	5B - UNPROTECTED
TOTAL AREA OF WORK	6,710 SF
ACTUAL BUILDING AREA	6,710 SF
BUILDING HEIGHT	(3) STORIES
BUILDING AREA LIMITATION - SQ. FT. (TABLE 503)	EXISTING TO REMAIN
BUILDING HEIGHT LIMITATION - STORIES (TABLE 503)	EXISTING TO REMAIN
STREET FRONTAGE INCREASE (150%) - SQ. FT.	N/A
AUTOMATIC SPRINKLER SYSTEM AREA INCREASE (300%) - SQ. FT.	N/A
AUTOMATIC SPRINKLER SYSTEM HEIGHT INCREASE	N/A
FIRE SUPPRESSION:	PROPOSED NFPA 13R
EXIT ACCESS FIRE RATINGS:	
FIRE WALLS:	
PARTY WALLS	1 HOUR
STAIR ENCLOSURES	1 HOUR
SHAFTS	2 HOUR & 1 HOUR (SEE PLAN)
EXIT ACCESS CORRIDORS	NONE
FIRE PROTECTION OF STRUCTURE:	
PRIMARY STRUCTURAL FRAME	N/A
LOAD BEARING WALLS - EXTERIOR	1 HOUR PER FIRE SEPARATION DISTANCE
LOAD BEARING WALLS - INTERIOR	N/A
NON-LOAD BEARING WALLS - EXTERIOR	N/A
NON-LOAD BEARING WALLS - INTERIOR	N/A
FLOOR CONSTRUCTION	N/A
ROOF CONSTRUCTION	N/A
OCCUPANT LOAD:	6,710 SF / 200 SF / PERSON = 33 PEOPLE

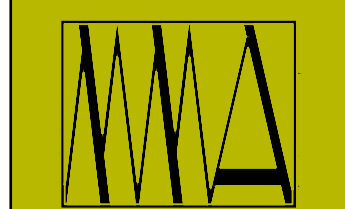
WALL LEGEND	
EXISTING WALL	---
NEW WALL	=====
FIRE RATED WALL	-----
1 HOUR
2 HOUR
3 HOUR
EXISTING WALL TO BE REMOVED	----

LIGHTING NOTES:
1. ALL FIXTURES SHALL BE SURFACE MOUNT
OVER THE ONE HOUR FIRE RATED FLOOR/
CEILING ASSEMBLIES @ THE LIVING UNITS.
TYP. AT THE LOWER LEVEL STORAGE ROOM.
2. RECESS LIGHT FIXTURES SHALL BE SET IN
FIRE RATED HOUSINGS, PRE-MANUFACTURED
OR SITE BUILT TO MATCH THE FIRE RATING
OF THE ASSEMBLY.



SECOND FLOOR PLAN

SCALE: 1/4" = 1'-0"



MARK MUELLER ARCHITECTS
A.I.A.
100 Commercial Street
Suite 205
Portland, Maine 04101
Phone: 207.774.9057
Email: rfi@muellerarchitects.com

© COPYRIGHT 2013
MARK MUELLER ARCHITECTS

PROPOSED RENOVATIONS @:
130 EASTERN PROMENADE
FOR: 130 EASTERN PROMENADE LLC
110 MARGINAL WAY
PORTLAND, MAINE 04101

SECOND FLOOR PLAN

REVISIONS	DATE
	02.24.2011
PROJECT	130 E. PROM
DRAWN BY	MRP
CHECK BY	MAM

REVISION: JULY 18, 2014
PERMIT SET: MAY 23, 2014

A-1.2