

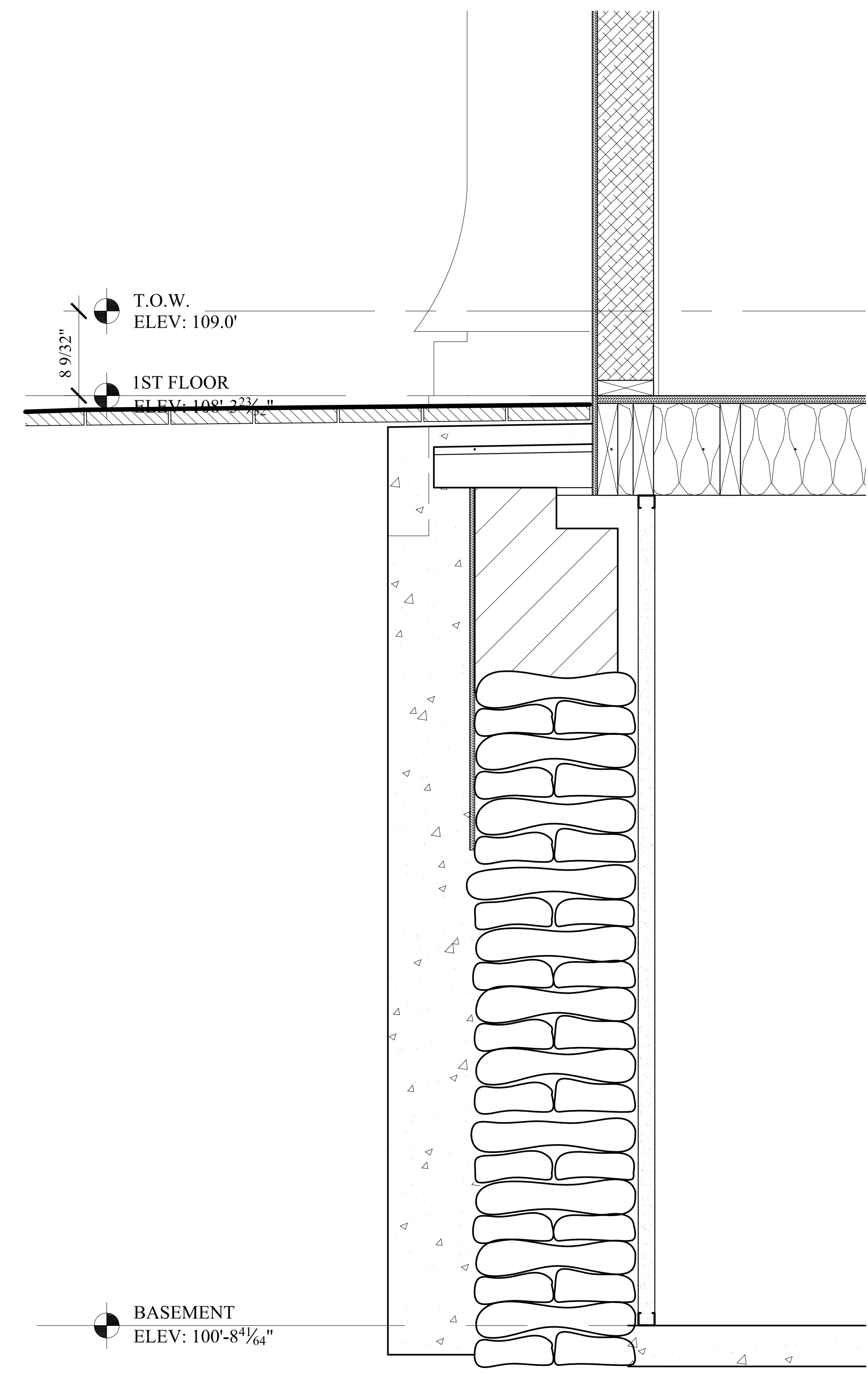
**M A R K
M U E L L E R
A R C H I T E C T S**
A.I.A.
100 Commercial Street
Suite 205
Portland, Maine 04101
Phone: 207.774.9057
Email:
rf@muellerarchitects.com

© COPYRIGHT 2013
MARK MUELLER ARCHITECTS

PROPOSED RENOVATIONS @:
130 EASTERN PROMENADE
FOR: 130 EASTERN PROMENADE LLC
110 MARGINAL WAY
PORTLAND, MAINE 04101

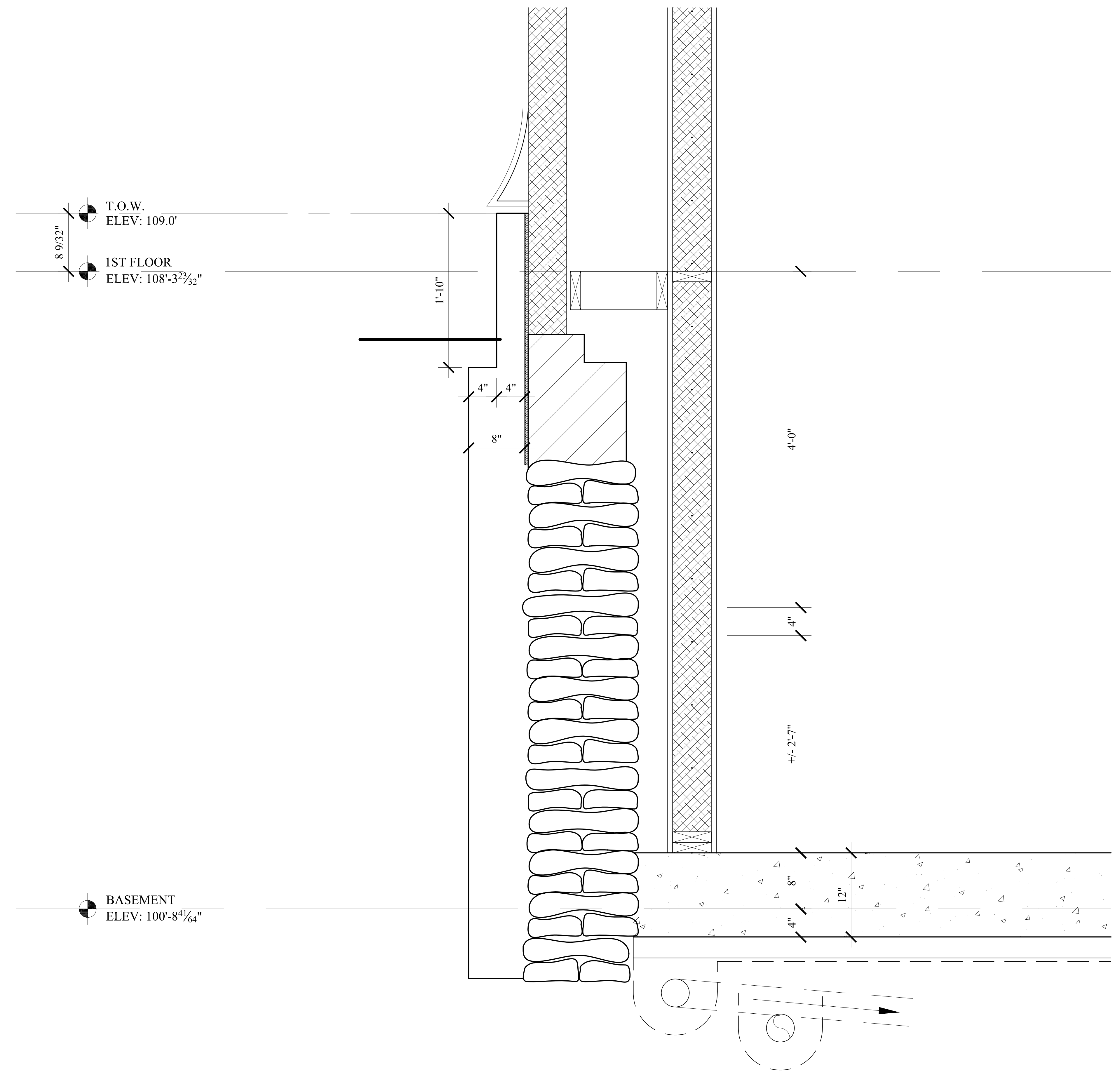
REVISIONS	DATE
	02.24.2011
PROJECT	130 E. PROM.
DRAWN BY	MRP
CHECK BY	MLM

A-3.6



WD3 WALL DETAIL
SCALE: 1 1/2" = 1'-0"

**PERMIT SET:
MAY 23, 2014**



WD4 WALL DETAIL
SCALE: 1 1/2" = 1'-0"