

NOTE:
FIELD VERIFY THE 50' MAX.
TRAVEL DISTANCE TO THE EXIT DURING THE
LAYOUT PHASE OF WORK.
REPORT DISCREPANCIES TO THE ARCHITECT
PRIOR TO ERECTING WALLS.

3RD FLOOR TRAVEL DISTANCE
SCALE: 1/8" = 1'-0"

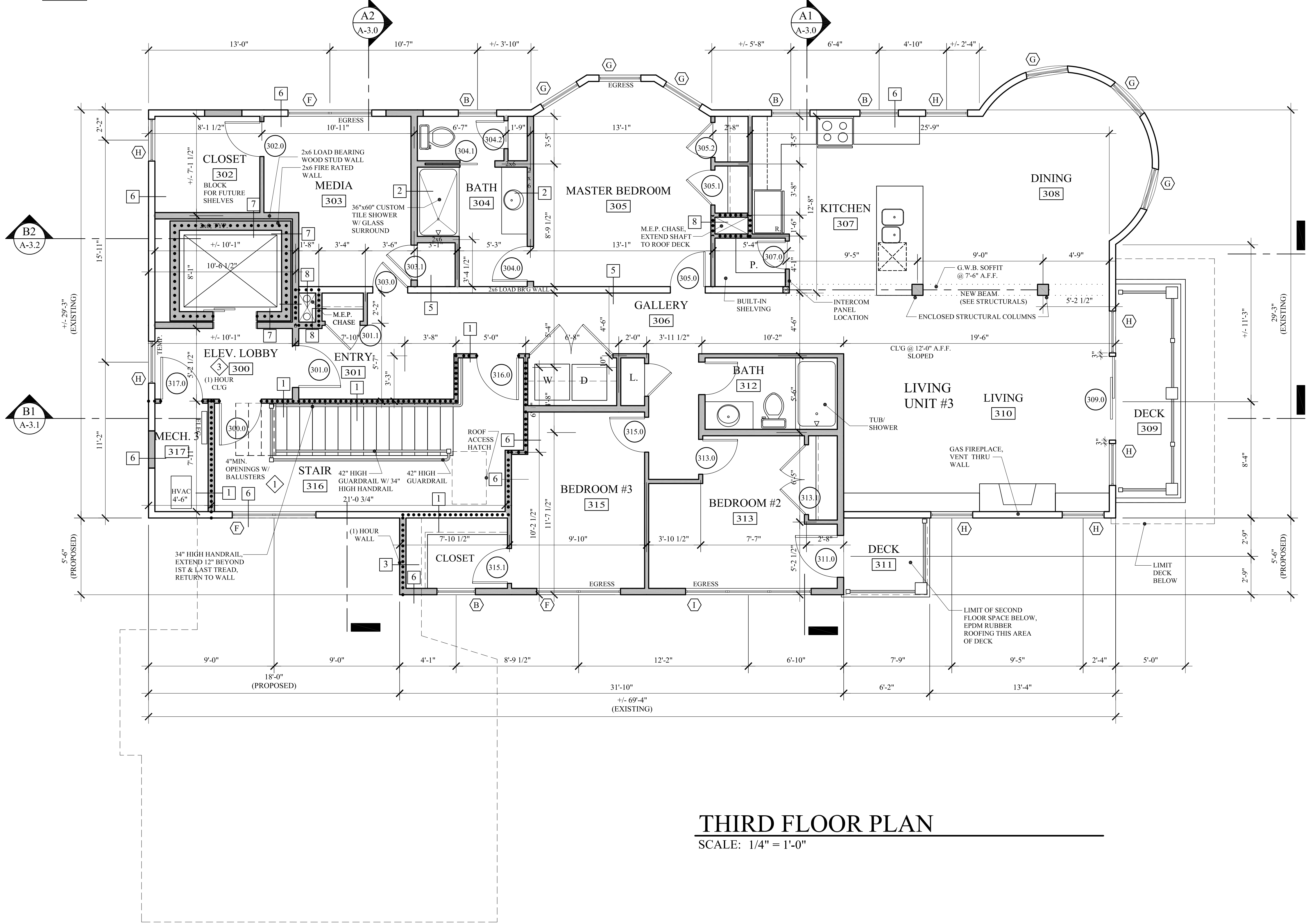
WALL LEGEND

EXISTING WALL	—————
NEW WALL	—————
FIRE RATED WALL	—————
1 HOUR
2 HOUR
3 HOUR
EXISTING WALL TO BE REMOVED	- - - - -

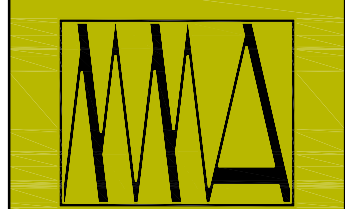
NOTE: THE DESIGN INCLUDES A SINGLE EXIT FROM THE SECOND AND THIRD FLOORS. THE PROJECT MEETS THE FOLLOWING REQUIREMENTS FOR EXITING:

IBC: TABLE 1021.2, STORIES WITH ONE EXIT. PROJECT MEETS THE REQUIREMENTS FOR R-2 SECOND AND THIRD FLOOR BY MEETING THE MAXIMUM 50' TRAVEL DISTANCE. THE BUILDING IS SPRINKLER PER NFPA13R AND CONTAINS EMERGENCY ESCAPE OPENINGS PER THE PLAN.

NFPA: A SINGLE EXIT IS ALLOWED PER SECTION 30.2.4.4, NUMBER OF EXITS IN THE APARTMENT CHAPTER. EXIT FROM EACH OF THE UPPER UNITS MEET THE 35' TRAVEL DISTANCE FROM THE UNIT ENTRY DOOR TO THE EXIT ENCLOSURE. ACTUAL DISTANCE PROVIDED: ZERO



THIRD FLOOR PLAN
SCALE: 1/4" = 1'-0"



MARK MUELLER ARCHITECTS
A.I.A.
100 Commercial Street
Suite 205
Portland, Maine 04101
Phone: 207.774.9057
Email: rfm@muellerarchitects.com

© COPYRIGHT 2013
MARK MUELLER ARCHITECTS

PROPOSED RENOVATIONS @
130 EASTERN PROMENADE
FOR: 130 EASTERN PROMENADE LLC
110 MARGINAL WAY
PORTLAND, MAINE 04101

THIRD FLOOR PLAN

DATE	02.24.2011
PROJECT	130 E. PROM
DRAWN BY	MMP
CHECK BY	MM

PERMIT SET:
MAY 23, 2014

A-1.3