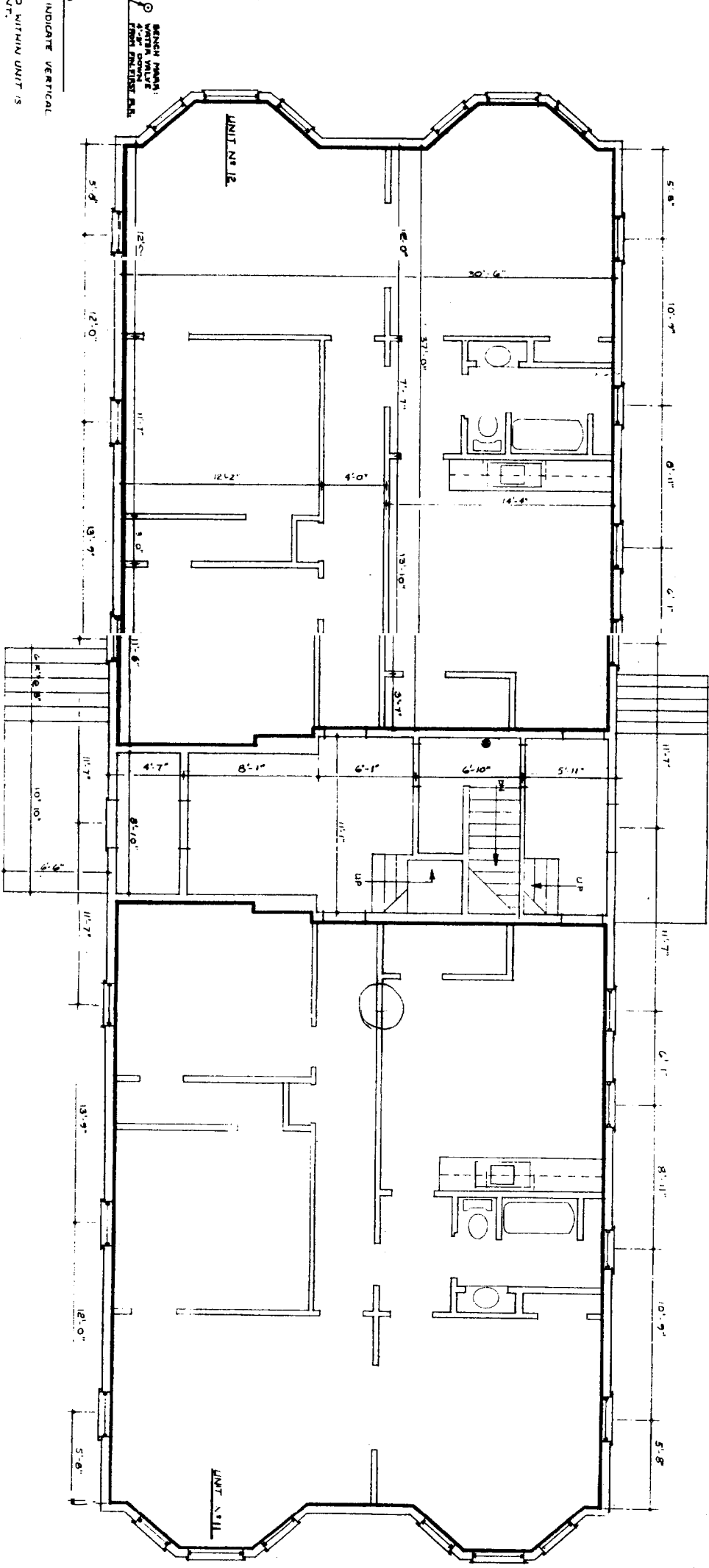


MOANING STREET

GENERAL NOTES

- 1. HEAVY SOLID LINES INDICATE VERTICAL UNIT BOUNDARIES.
- 2. AREA NOT INCLUDED WITHIN UNIT IS A COMMON ELEMENT.
- 3. DIMENSIONS TYPICAL, BOTH UNITS THIS FLOOR.

SEALING MARKS:  
 4'-0" DOWN  
 FROM FINISHED S.F.



55 MORNING STREET CONDOMINIUM

FIRST FLOOR PLAN

SCALE: 1/8" = 1'-0"

3 of 7  
 State of Maine, Combed and as  
 Registry of Deeds  
 Received July 31, 1987  
 at 8:45 AM in P.M. and recorded in  
 Plan Book 1153 Page 121  
 Name Stanley M. Gawron  
 Register

2

drawn the sheet	drawn
FIRST FLOOR PLAN	EGC.
UNITS 11 & 12	checked
commission number	54
1154	date
	FEB 23, 1988

CONDOMINIUM DOCUMENTS FOR MORNING ST. REALTY ASSOC.  
 55 MORNING STREET, PORTLAND, MAINE



GAWRON ARCHITECTS  
 P.O. BOX 1304 SCARBOROUGH MAINE 04074