

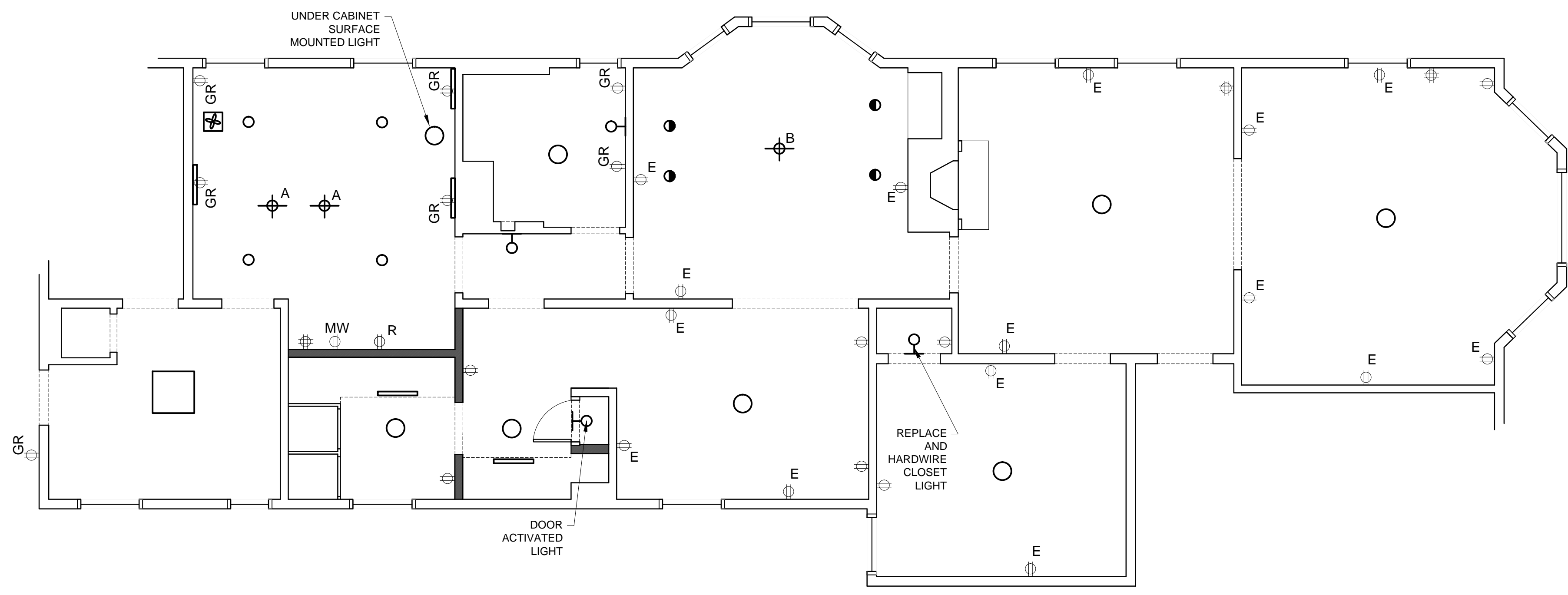
**1 PROPOSED FLOOR PLAN**  
SCALE: 1/4" = 1'-0" 3RD FLOOR UNIT #7 = 1335 SF

- GENERAL NOTES:**
1. REPLACE ALL RADIATORS
  2. REMOVE ALL DATA/PHONE LINES
  3. PROVIDE WATER SUPPLY FOR REFRIGERATOR ICE MAKER.
  4. PROVIDE EXPLORATORY DEMOLITION TO CONFIRM ABILITY TO VENT RANGE HOOD OVER OR AROUND EXISTING KITCHEN WINDOW.
  5. CONFIRM ALL KITCHEN CABINERY WITH OWNER.

**STRUCTURAL NOTE:**  
VERIFY THE NEW POST SUPPORTS AT KITCHEN WALL OPENING CARRY THROUGH BASEMENT, 1ST AND 2ND FLOOR UNITS TO FOOTING.

- KEY**
- LED UNDER CABINET LIGHT
  - ⊕ LED PENDANT LIGHT
  - LED SURFACE MOUNTED LIGHT
  - LED RECESSED ADJUSTABLE WALL WASHER, DIMABLE
  - LED RECESSED LIGHT, DIMABLE
  - ⊕ LED WALL SCONCE
  - 2'X2' HIGH OUTPUT LED SURFACE MOUNTED LIGHT FIXTURE
  - ⊕<sup>E</sup> EXIST DUPLEX OUTLET
  - ⊕ DUPLEX OUTLET
  - ⊕ QUAD OUTLET
  - ⊕<sup>G</sup> GROUNDED OUTLET SURFACE MOUNTED ON UNDER SIDE OF WALL CABINET
  - ⊕<sup>R</sup> REFRIGERATOR
  - ⊕<sup>MW</sup> MICROWAVE
  - ⊕<sup>GR</sup> EXHAUST FAN & LIGHT

- ELECTRICAL GENERAL NOTES:**
1. ALL ELECTRICAL WORK TO FOLLOW APPLICABLE CODES.
  2. VERIFY ALL SWITCH AND OUTLET LOCATIONS, HEIGHTS, FUNCTION AND FIXTURE SELECTIONS WITH OWNER.



**2 REFLECTED CEILING PLAN**  
SCALE: 1/4" = 1'-0"