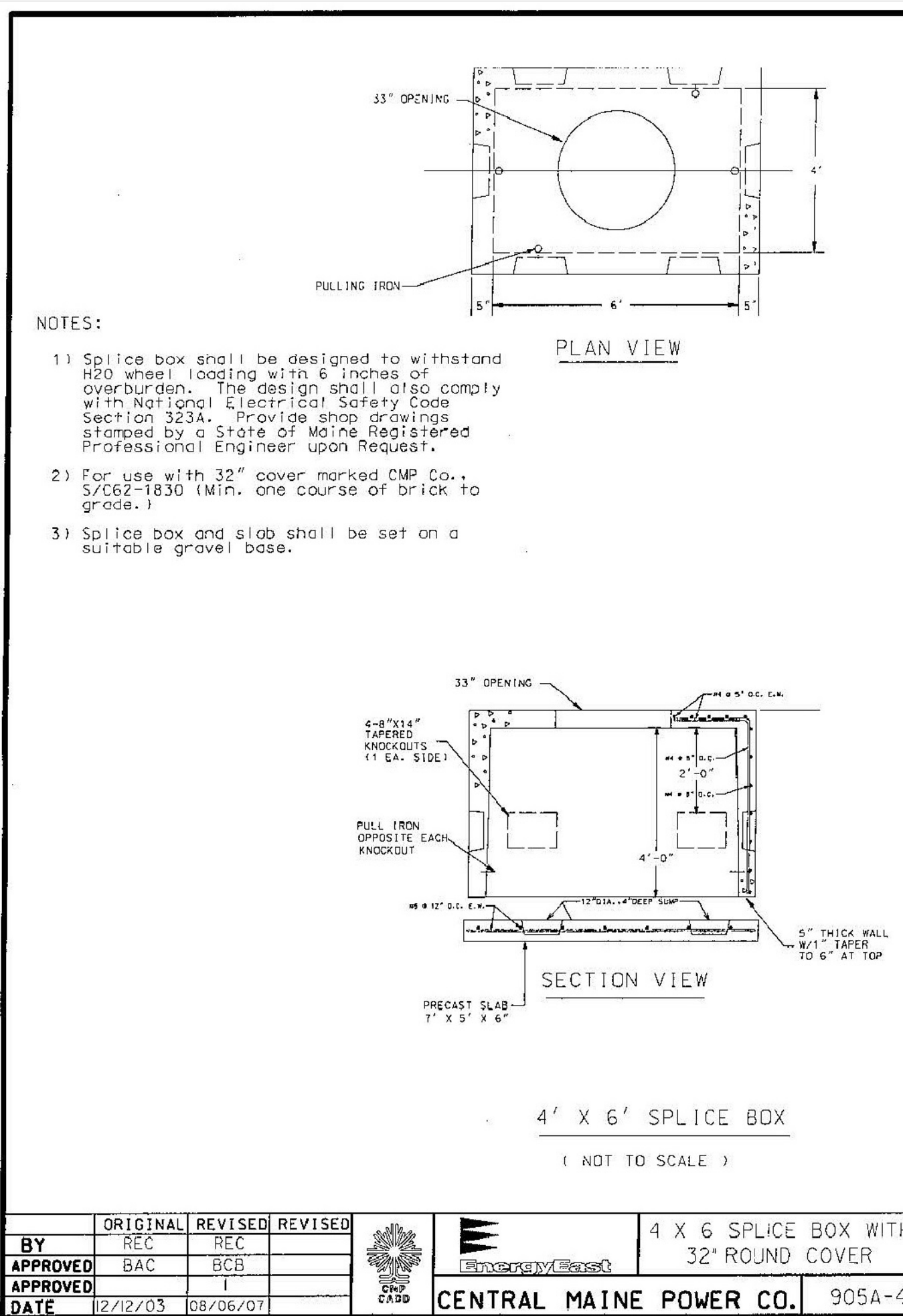


NOTES

1. UNDERGROUND ELECTRIC & TELECOM, INCLUDING DUCT BANKS ARE SHOWN FOR COORDINATION PURPOSES ONLY. COORDINATE ALL WORK WITH CENTRAL MAINE POWER, FAIRPOINT AND SPECTRUM PRIOR TO CONSTRUCTION.
2. LOCATION AND SEPARATION OF PEDESTALS TO BE DETERMINED BY UTILITY COMPANIES.
3. CONTRACTOR TO COORDINATE ALL UNDERGROUND ELECTRICAL WORK WITH CENTRAL MAINE POWER AND ABUTTERS RECEIVING NEW UNDERGROUND SERVICES PRIOR TO CONSTRUCTION.
4. COORDINATE UTILITY CROSSINGS (CONFLICTS) PRIOR TO CONSTRUCTION.
5. DUCT BANKS TO BE MODIFIED AS NECESSARY IN THE FIELD PER CENTRAL MAINE POWER, FAIRPOINT OR SPECTRUM.
6. WATER METER MUST BE ACCESSIBLE TO ALL TENANTS OF THE BUILDING.
7. SPECTRUM AND FAIRPOINT LINES CANNOT ENTER CMP VAULT.

ALL TRENCH CONDUITS SHALL BE SCHEDULE 40 PVC, UNLESS OTHERWISE NOTED
DUCT BANK DETAIL - B (IN SIDEWALK)
ELECTRIC/TELEPHONE/FIRE ALARM/CABLE
 NOT TO SCALE

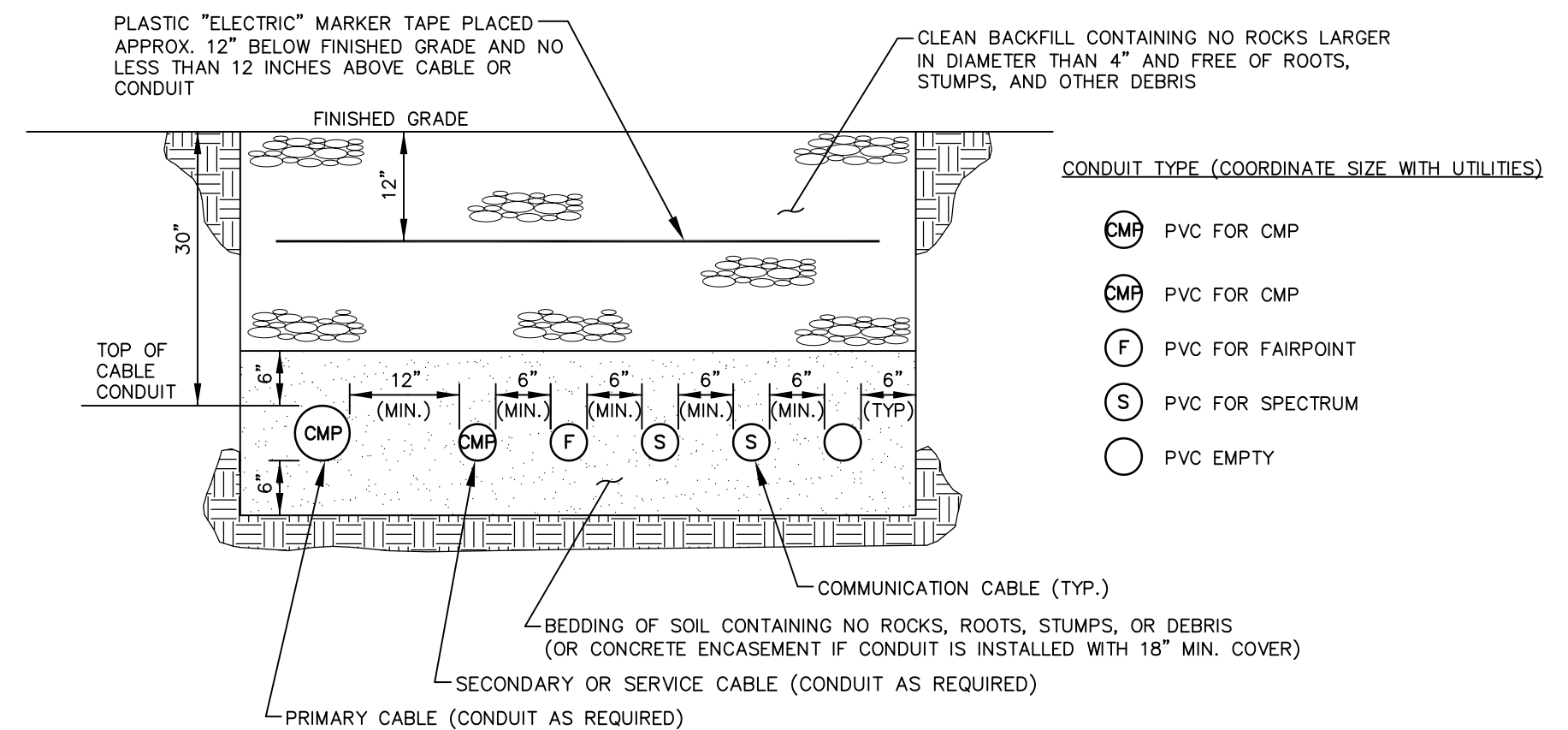
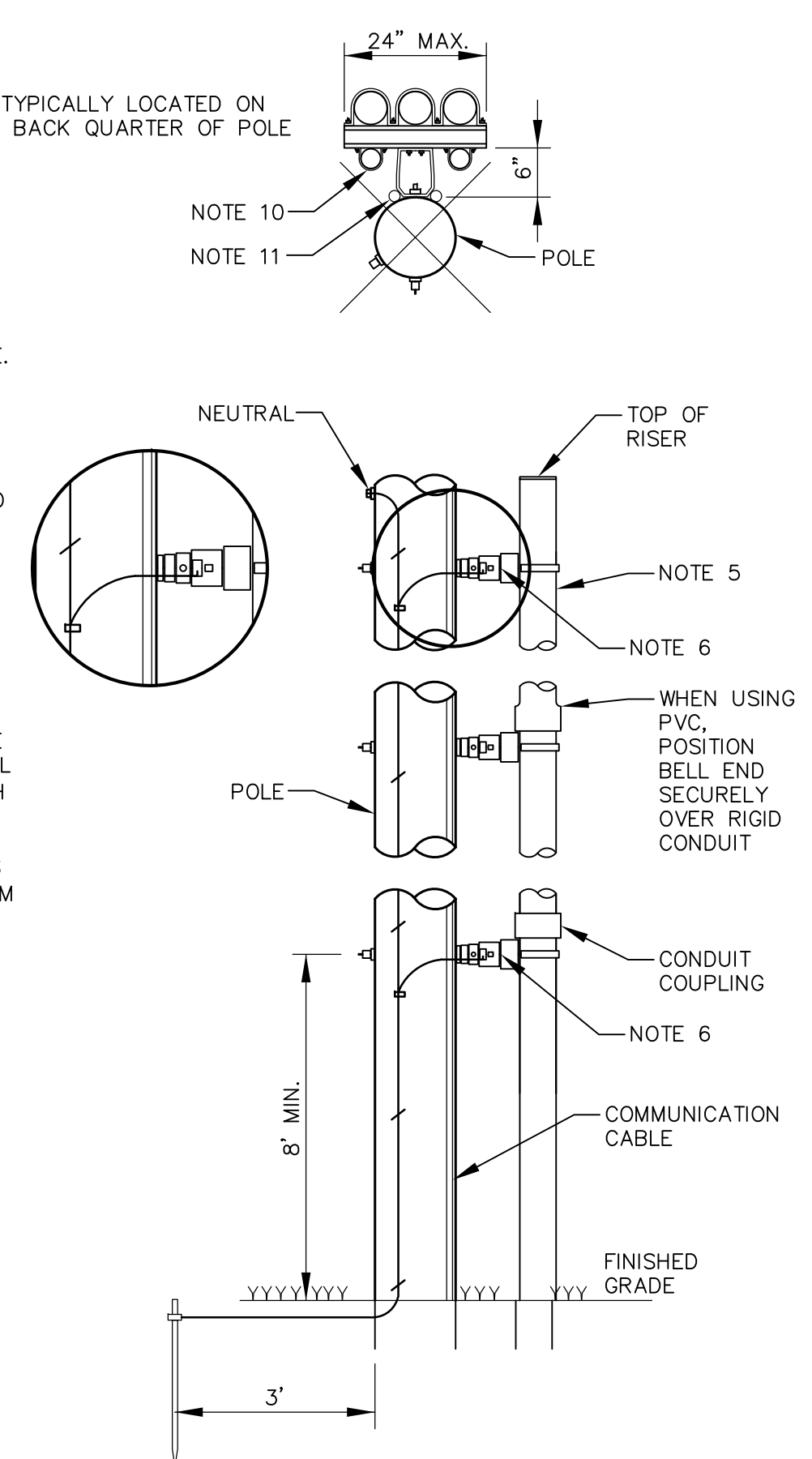


BY	REC	REVISED	REC	REVISED		4' X 6' SPLICE BOX WITH 32" ROUND COVER CENTRAL MAINE POWER CO. 905A-4
APPROVED	BAC		BCB			
APPROVED						
DATE	12/12/03		08/06/07			

NOTES:

1. STAND OFF BRACKETS ARE REQUIRED WHEN MORE THAN ONE CONDUIT PER UTILITY IS TO BE INSTALLED ON A POLE.
2. ALL THREE PHASE PRIMARY RISERS, WHETHER STAND OFF BRACKETS ARE USED OR NOT, SHALL BE RIGID STEEL FOR THE FIRST SECTION.
3. ON SINGLE PHASE PRIMARY, SECONDARY AND SERVICE URD RISERS USING STAND OFF BRACKETS, RIGID STEEL OR SCHEDULE 80 MAY BE USED.
4. WHERE RIGID STEEL OR SCHEDULE 80 PVC IS USED FOR THE RISER, ONE BRACKET SHALL BE USED TO SUPPORT EACH SECTION OF CONDUIT UP TO 10 FEET IN LENGTH. EACH BRACKET IS TO BE PLACED JUST BELOW THE RISER CONDUIT COUPLING.
5. CONDUIT SECTIONS FOR A SINGLE PHASE OR THREE PHASE RISERS USING STAND OFF BRACKETS SHALL BE RIGID STEEL OR SCHEDULE 80 PVC CONDUIT ONLY (SEE NOTE #2), WITH THE EXCEPTION THAT SCHEDULE 40 PVC SUNLIGHT RESISTANT CONDUIT MAY BE USED FOR THE TOP SECTION OF THE RISER (NOT LONGER THAN 10'). IF TOP SECTION IS LONGER THAN 24" IT MUST BE SUPPORTED WITH A MINIMUM OF ONE STAND OFF BRACKET. IF TOP SECTION IS SCHEDULE 40 PVC AND LONGER THAN 72" IT MUST BE SUPPORTED BY NO FEWER THAN TWO STAND OFF BRACKETS.
6. WHERE PVC IS USED FOR THE RISER, EACH STAND OFF BRACKET SUPPORTING THE PVC SHALL BE GROUNDED. WHERE STEEL IS USED FOR THE RISER ONE STAND OFF BRACKET SUPPORTING THE STEEL IS REQUIRED TO BE GROUNDED.
7. SWEEPS, WHEN USED, ARE REQUIRED TO BE STEEL.
8. IF RISER IS ALL STEEL CONDUIT, INSTALL INSULATED GROUNDING BUSHING AT TOP OF RISER.
9. LOWEST BRACKET SHALL BE A MINIMUM OF 8 FEET ABOVE FINISHED GRADE.
10. ALTERNATE LOCATION FOR COMMUNICATION CABLE IF RUN IN METAL CONDUIT OR SCHEDULE 80.
11. COMMUNICATION CABLE MAY BE ATTACHED DIRECTLY TO POLE ADJACENT TO BRACKETS.

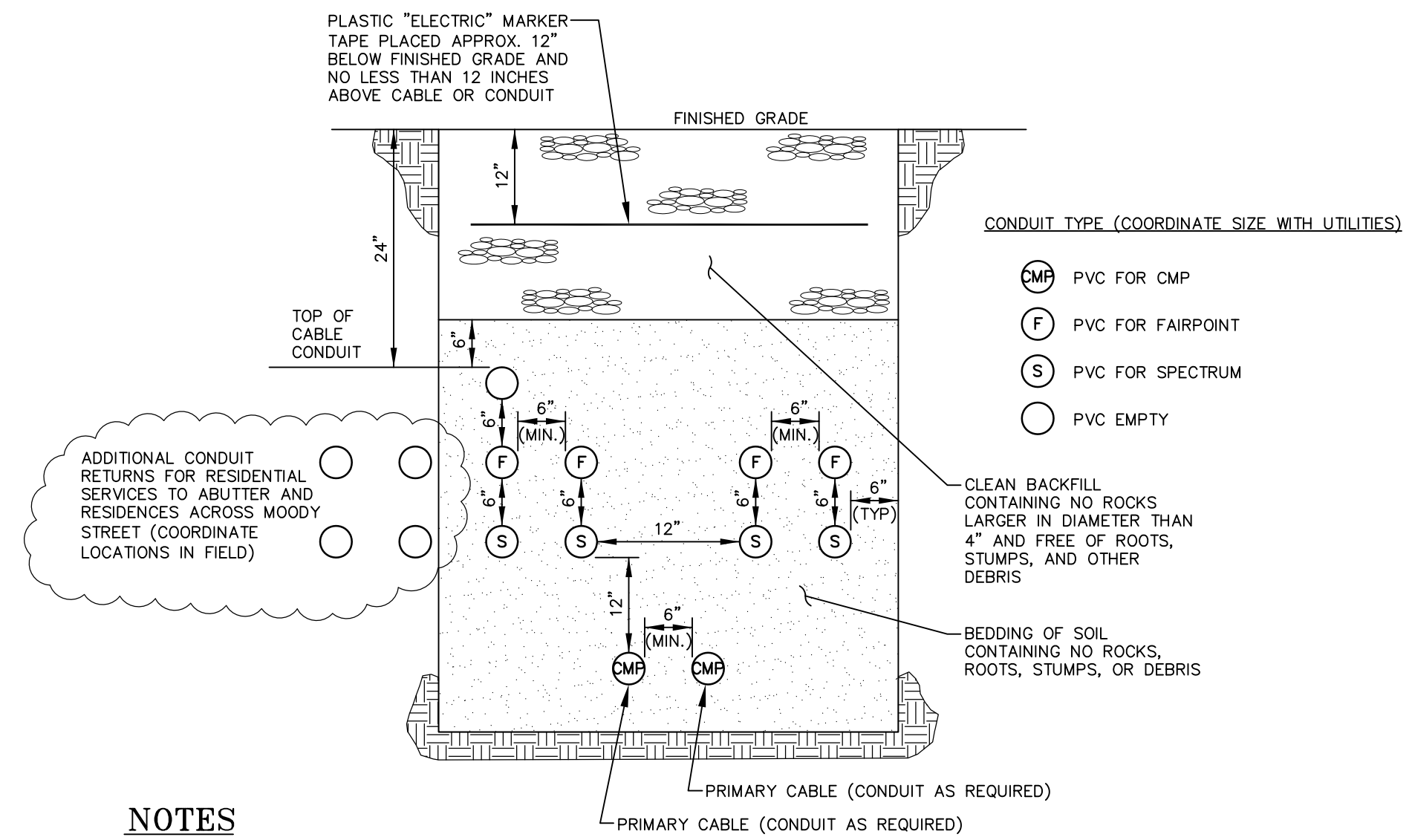
TYPICAL RISER DETAIL
 NOT TO SCALE



NOTES

1. UNDERGROUND ELECTRIC & TELECOM, INCLUDING DUCT BANKS ARE SHOWN FOR COORDINATION PURPOSES ONLY. COORDINATE ALL WORK WITH CENTRAL MAINE POWER, FAIRPOINT AND SPECTRUM PRIOR TO CONSTRUCTION.
2. LOCATION AND SEPARATION OF PEDESTALS TO BE DETERMINED BY UTILITY COMPANIES.
3. CONTRACTOR TO COORDINATE ALL UNDERGROUND ELECTRICAL WORK WITH CENTRAL MAINE POWER AND ABUTTERS RECEIVING NEW UNDERGROUND SERVICES PRIOR TO CONSTRUCTION.
4. COORDINATE UTILITY CROSSINGS (CONFLICTS) PRIOR TO CONSTRUCTION.
5. DUCT BANKS TO BE MODIFIED AS NECESSARY IN THE FIELD PER CENTRAL MAINE POWER, FAIRPOINT OR SPECTRUM.
6. SPECTRUM AND FAIRPOINT LINES CANNOT ENTER CMP VAULT.

ALL TRENCH CONDUITS SHALL BE SCHEDULE 40 PVC, UNLESS OTHERWISE NOTED
DUCT BANK DETAIL - B (IN ROAD)
ELECTRIC/TELEPHONE/FIRE ALARM/CABLE
 NOT TO SCALE



NOTES

1. UNDERGROUND ELECTRIC & TELECOM, INCLUDING DUCT BANKS ARE SHOWN FOR COORDINATION PURPOSES ONLY. COORDINATE ALL WORK WITH CENTRAL MAINE POWER, FAIRPOINT AND SPECTRUM PRIOR TO CONSTRUCTION.
2. LOCATION AND SEPARATION OF PEDESTALS TO BE DETERMINED BY UTILITY COMPANIES.
3. CONTRACTOR TO COORDINATE ALL UNDERGROUND ELECTRICAL WORK WITH CENTRAL MAINE POWER AND ABUTTERS RECEIVING NEW UNDERGROUND SERVICES PRIOR TO CONSTRUCTION.
4. COORDINATE UTILITY CROSSINGS (CONFLICTS) PRIOR TO CONSTRUCTION.
5. DUCT BANKS TO BE MODIFIED AS NECESSARY IN THE FIELD PER CENTRAL MAINE POWER, FAIRPOINT OR SPECTRUM.
6. SPECTRUM AND FAIRPOINT LINES CANNOT ENTER CMP VAULT.
7. DUCT BANK TO BE PLACED AS CLOSE TO SIDE BOUNDARY LINE AS ALLOWED BY UTILITY STANDARDS FOR LANDSCAPE DESIGN.

ALL TRENCH CONDUITS SHALL BE SCHEDULE 40 PVC, UNLESS OTHERWISE NOTED
DUCT BANK DETAIL - A (ALONG PROPOSED HOUSE)
ELECTRIC/TELEPHONE/FIRE ALARM/CABLE
 NOT TO SCALE

THIS PLAN IS FOR REVIEW PURPOSES ONLY AND IS NOT INTENDED FOR CONSTRUCTION OR RECORDING

Revision:	By:	Date:	Change:
2	SMA	3/7/18	REVISED PER CITY REVIEW COMMENTS
1	SMA	12/1/17	SUBMITTED FOR CITY REVIEW

PROJECT NUMBER: 41374 ACAD FILE: 41374-DETAILS.DWG SCALE: AS NOTED DATE: JANUARY 31, 2018

Drawing Name:
CONSTRUCTION DETAILS - SHEET 1

Project Name:
PROPOSED RESIDENCE
9 MOODY STREET, PORTLAND, MAINE

Owner/Applicant:
BRADY ENTERPRISES
80 EXCHANGE STREET #30, PORTLAND, ME 04101

SHEET 5 OF 7