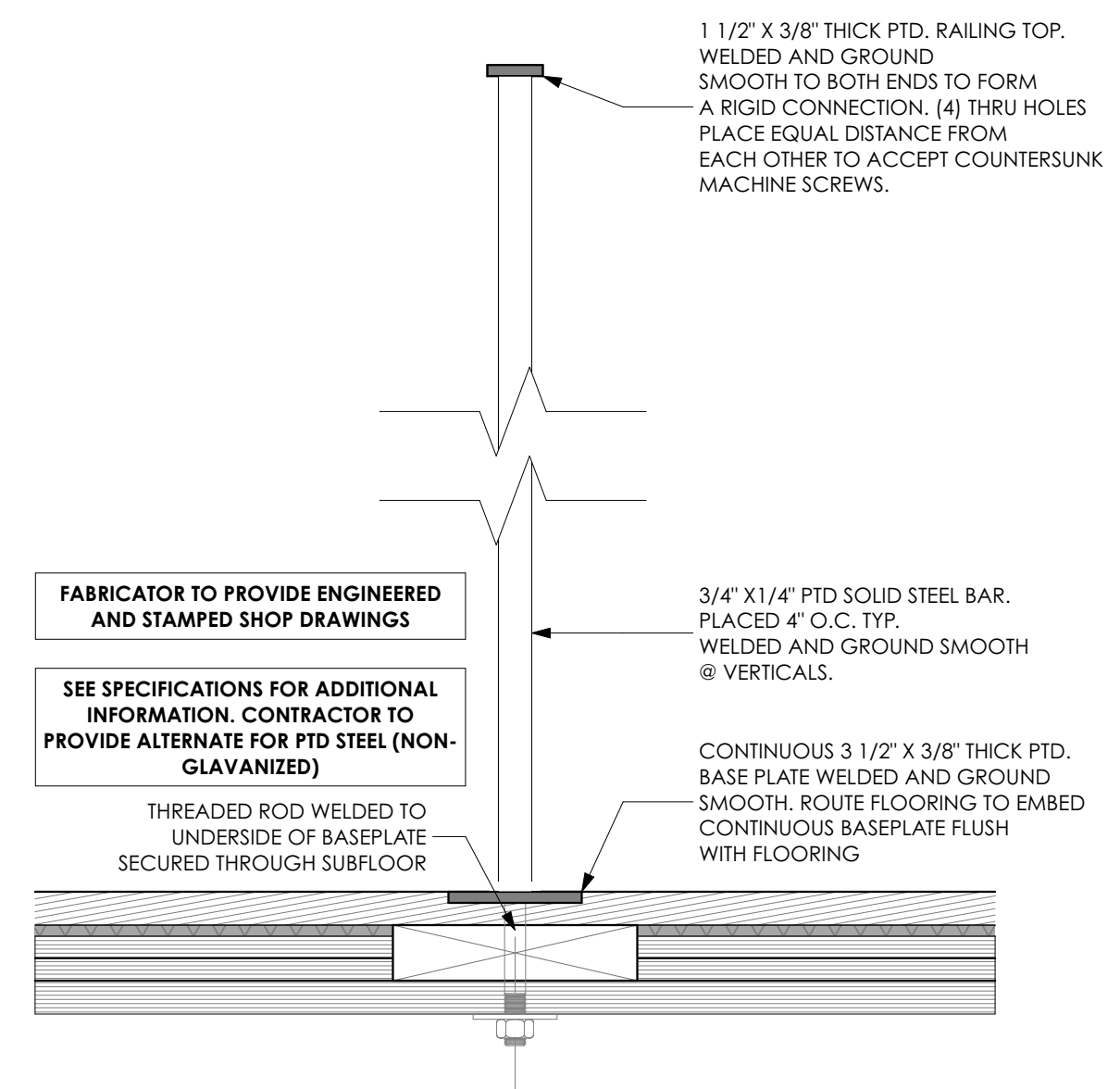
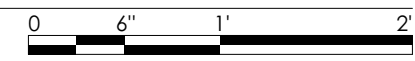
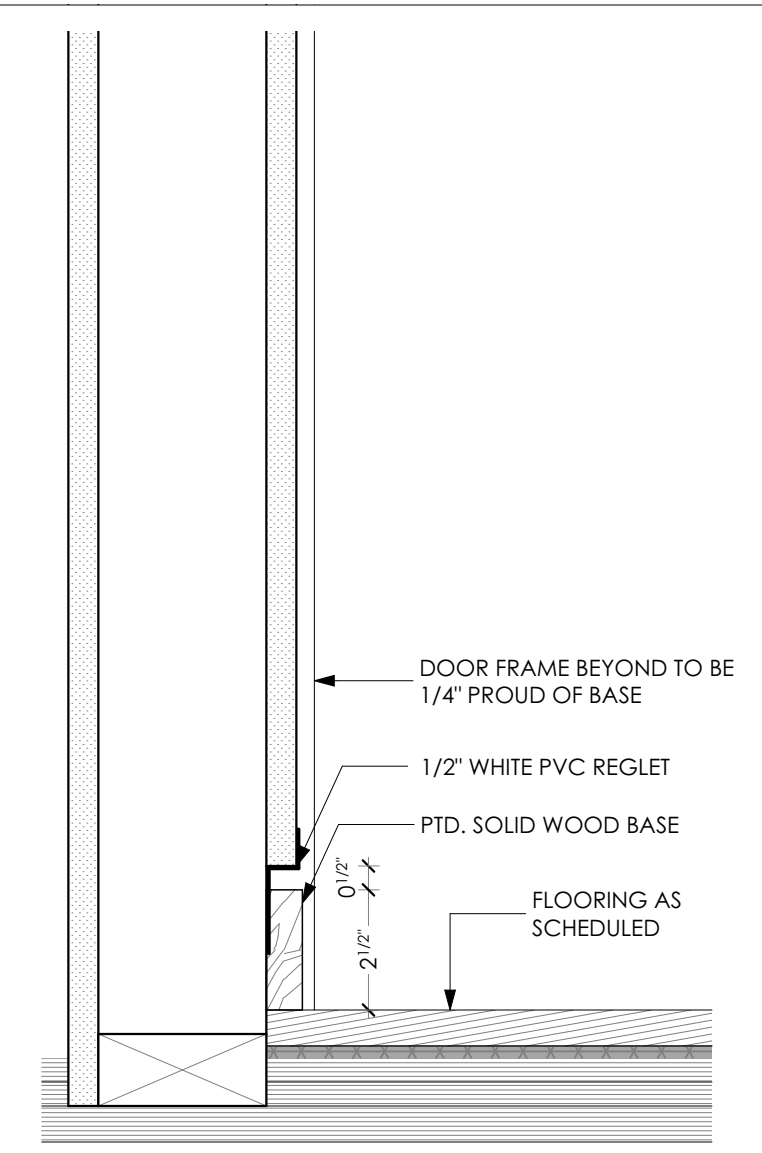
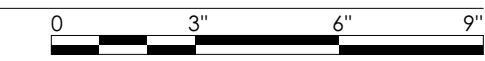


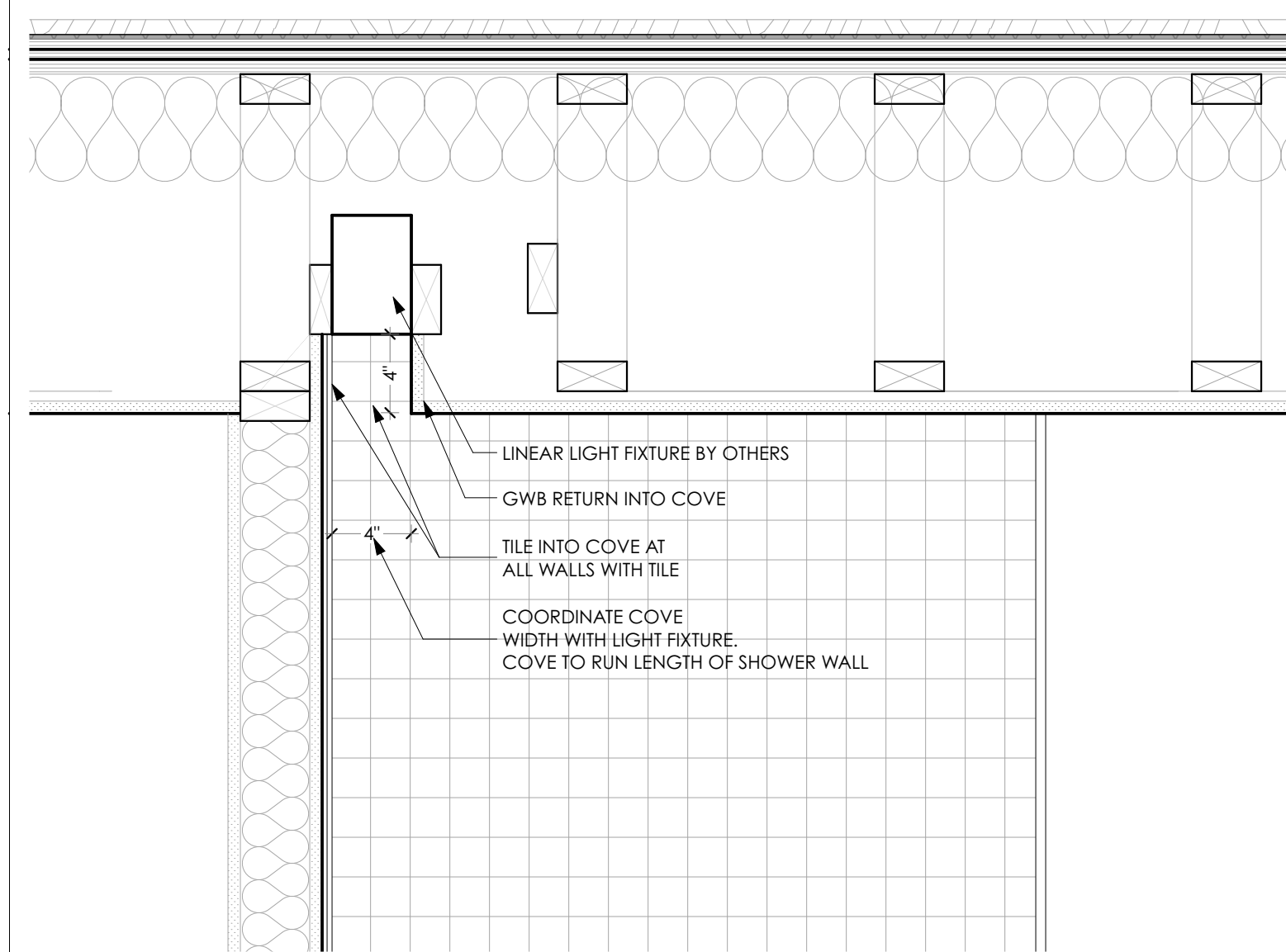
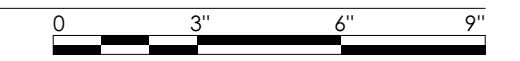
12 DROPPED CEILING AT AHU - TYP.  
SCALE: 1" = 1'-0"



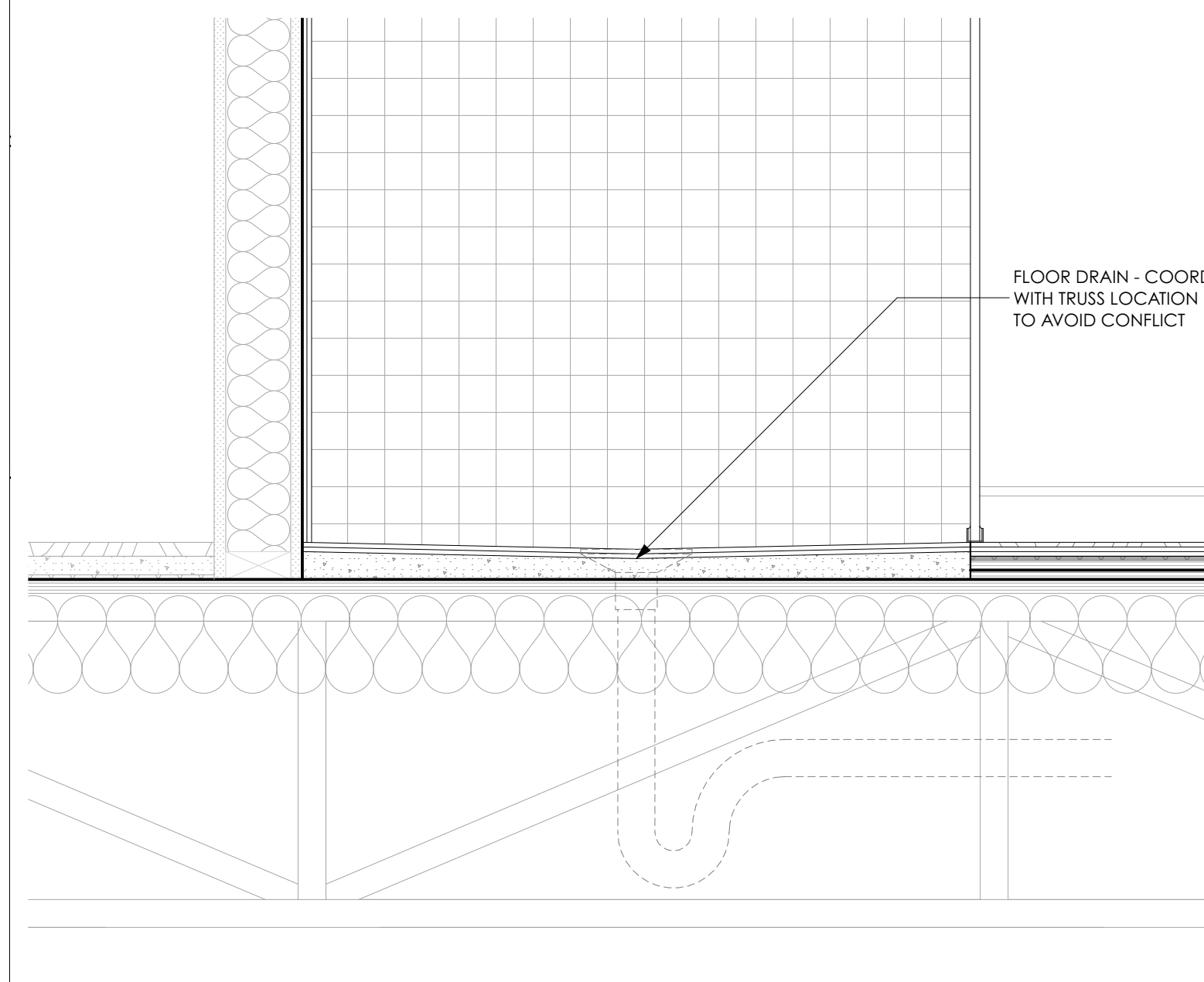
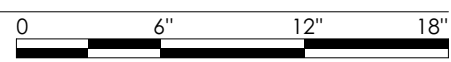
6 BASE SECTION DETAIL - TYP.  
SCALE: 3" = 1'-0"



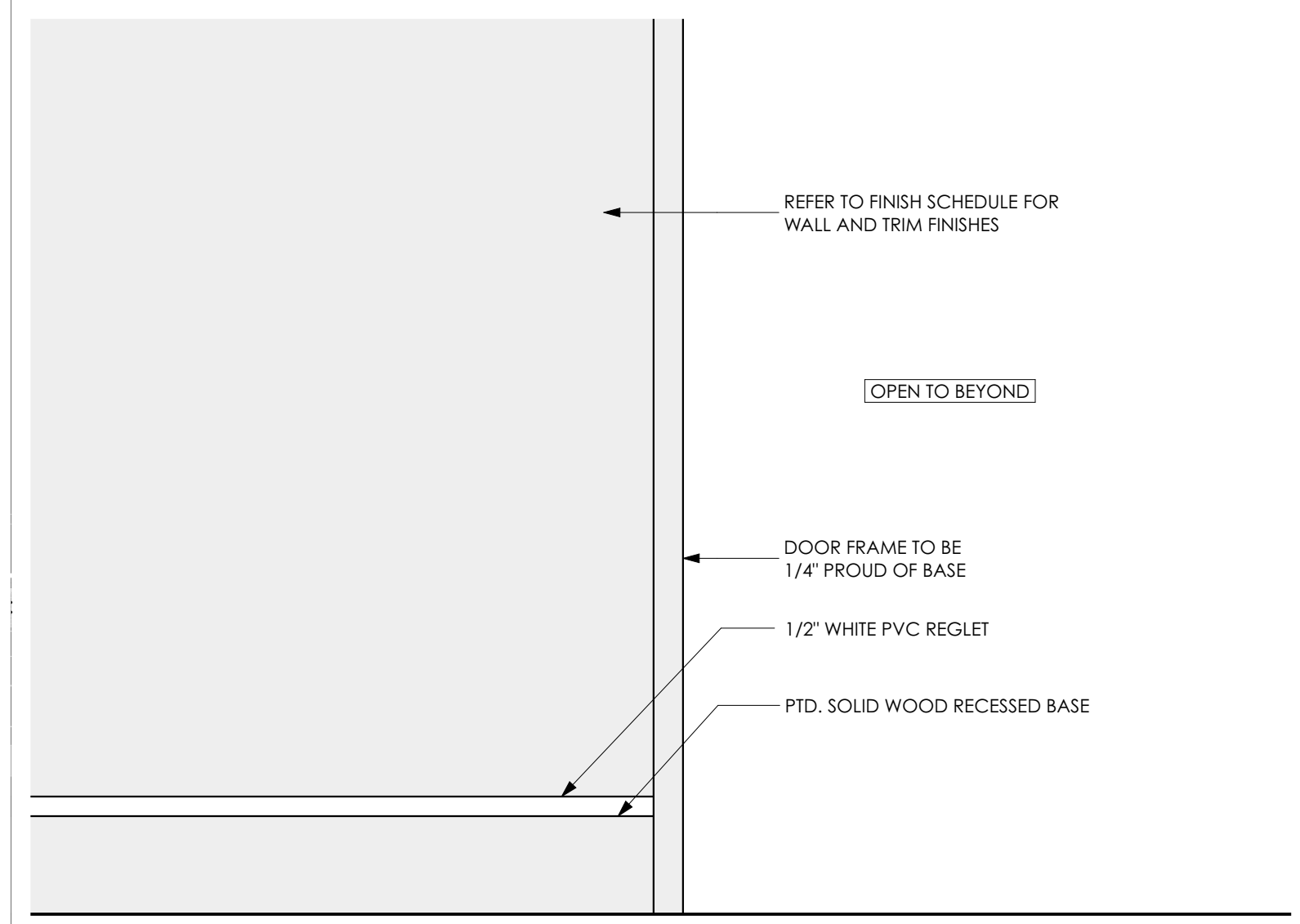
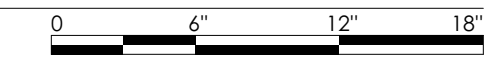
3 OWNER UNIT BASE SECTION DETAIL - TYP.  
SCALE: 3" = 1'-0"



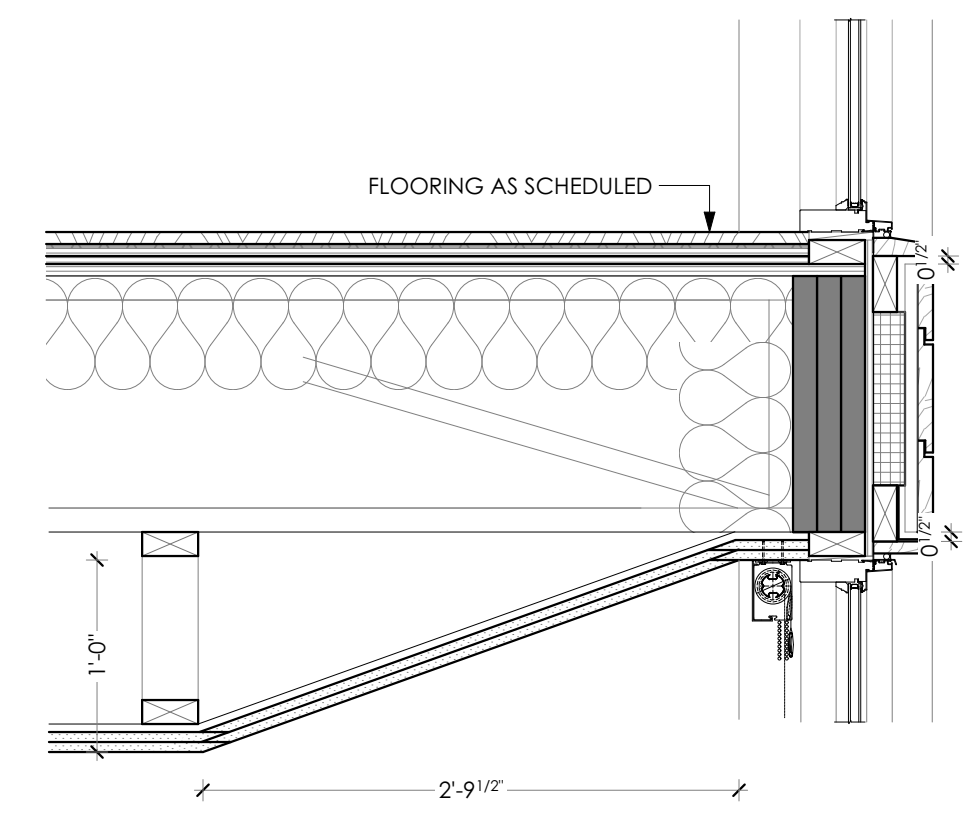
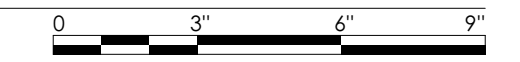
8 SHOWER LIGHT COVE SECTION  
SCALE: 1 1/2" = 1'-0"



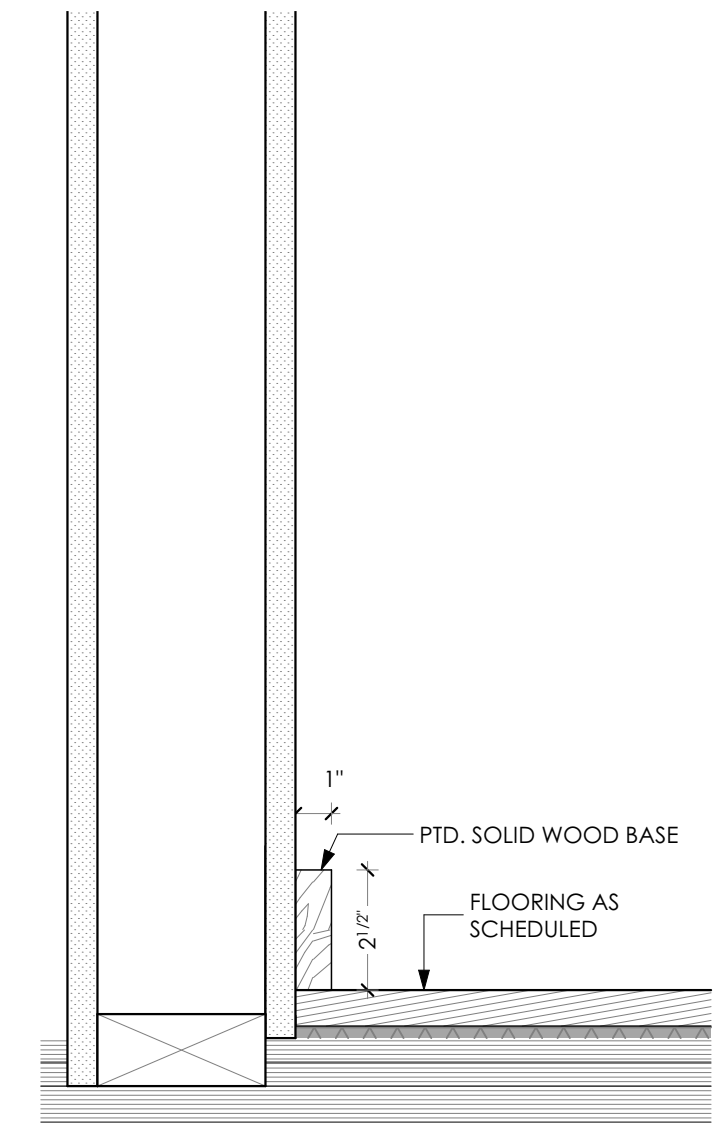
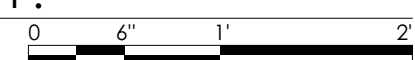
5 FLUSH SHOWER PAN SECTION DETAIL  
SCALE: 1 1/2" = 1'-0"



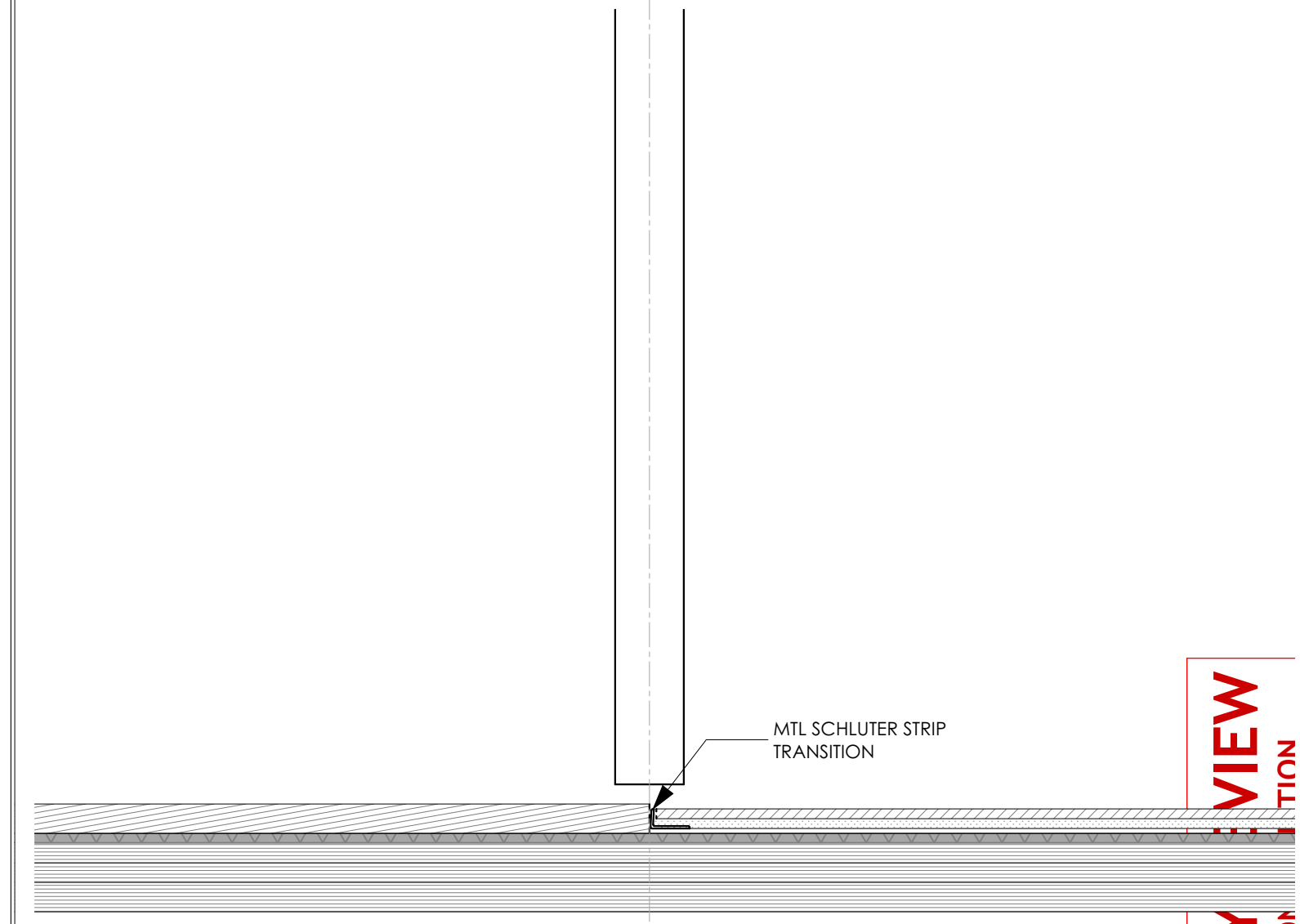
2 OWNER UNIT BASE ELEVATION DETAIL AT OPENING - TYP.  
SCALE: 3" = 1'-0"



7 DROPPED CEILING AT EXTERIOR WINDOW - TYP.  
SCALE: 1" = 1'-0"



4 TENANT UNIT BASE SECTION DETAIL - TYP.  
SCALE: 3" = 1'-0"



1 FLOOR TRANSITION DETAIL - WD FLOOR TO TILE  
SCALE: 3" = 1'-0"



BIM Server: bimservr.cjabb.me - BIM Server 21/9 Moody Street/9 Moody Street\_02152018

ISSUE NUMBER	DESCRIPTION
001	
002	

ISSUE	DATE	DESCRIPTION
001	12/01/2017	CITY REVIEW
002	03/07/2018	REVISOR'S CITY REVIEW COMMENTS

ARCHITECT	DATE
BR/JJK	3/7/18

**Brady Residence**  
Jim and Julia Brady  
9 Moody Street Portland ME 04101

FOR CITY REVIEW NOT FOR CONSTRUCTION