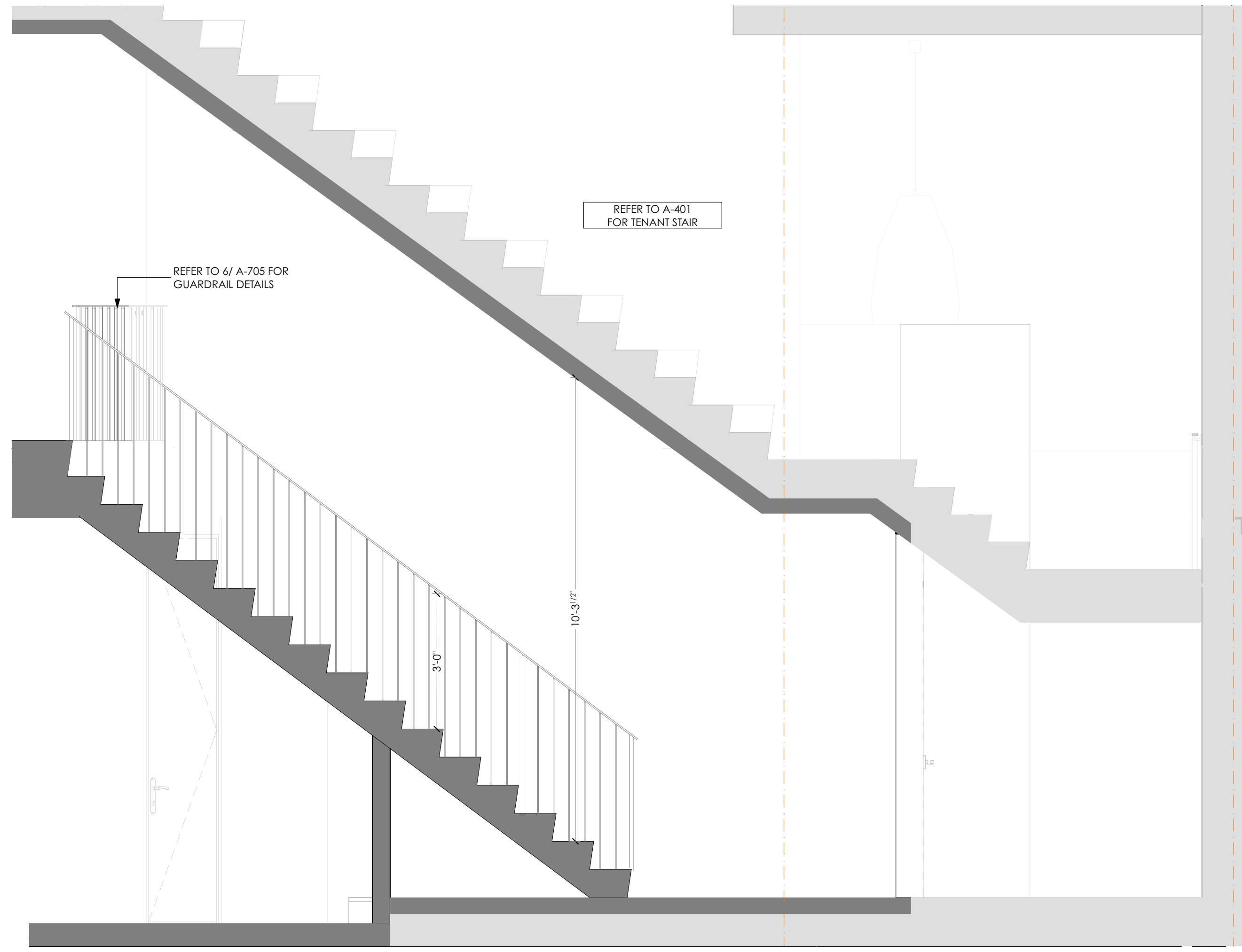
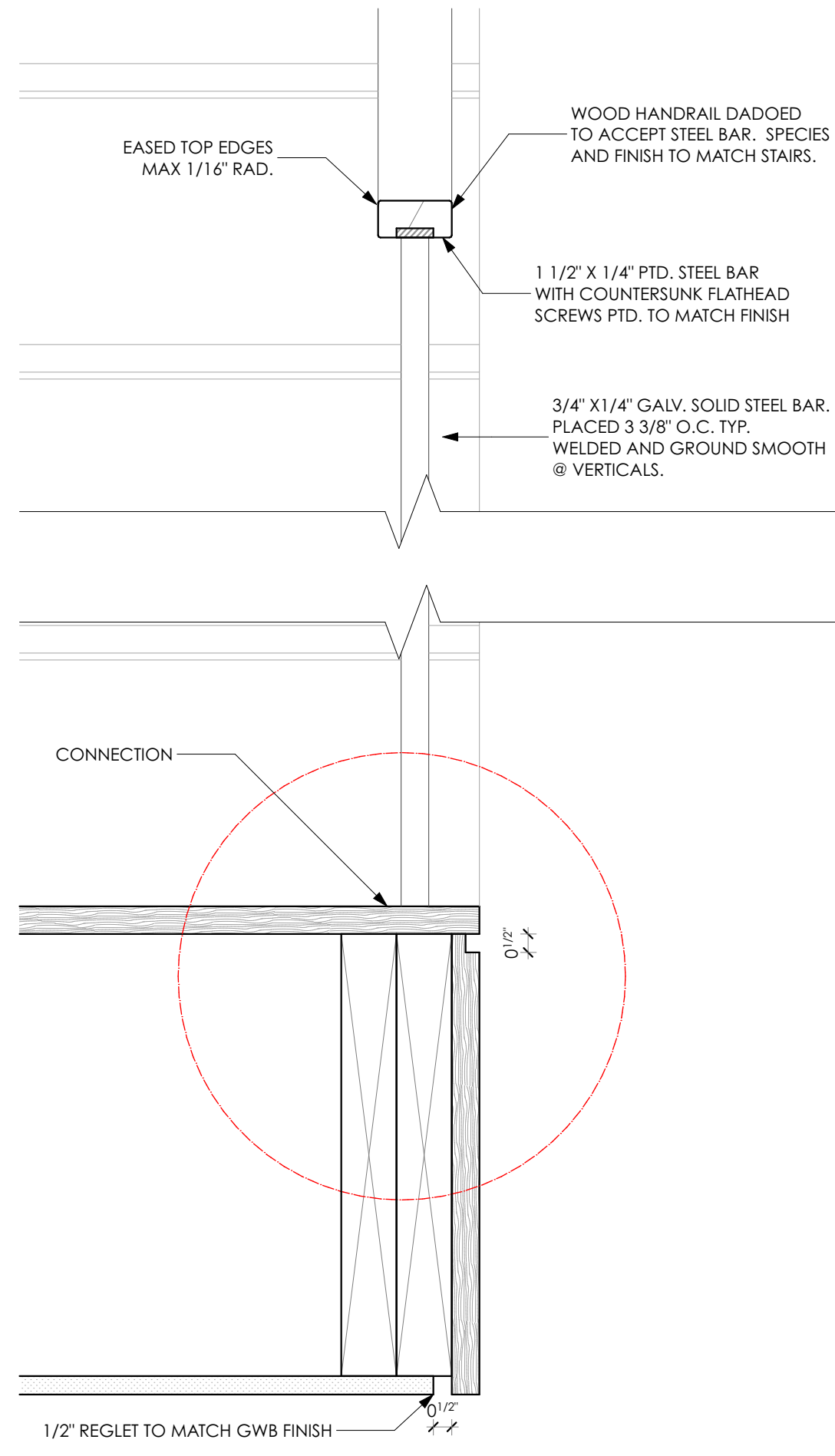
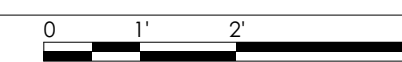


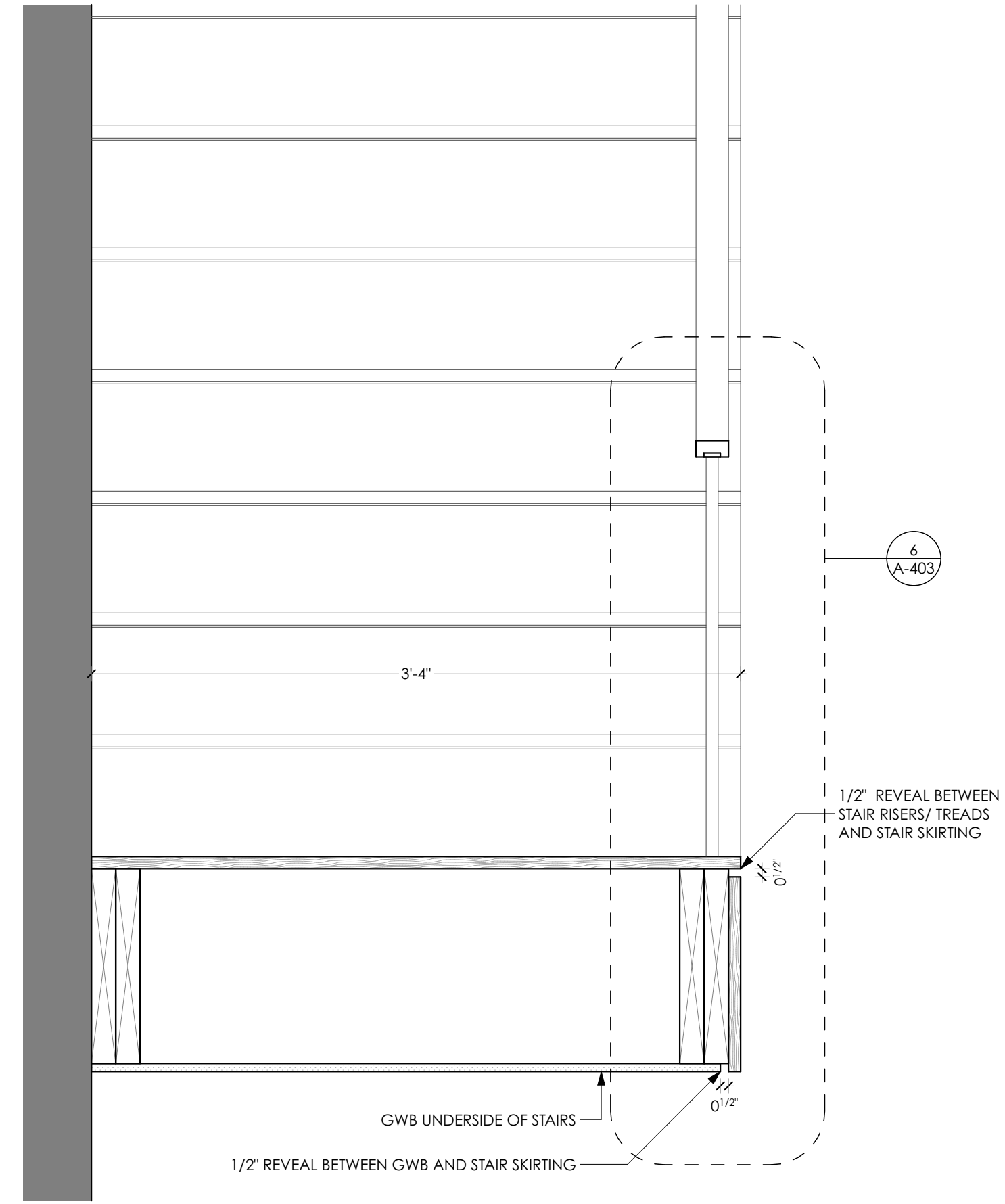
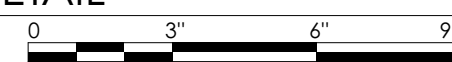
3 STAIR BASE SECTION DETAIL
SCALE: 1 1/2" = 1'-0"



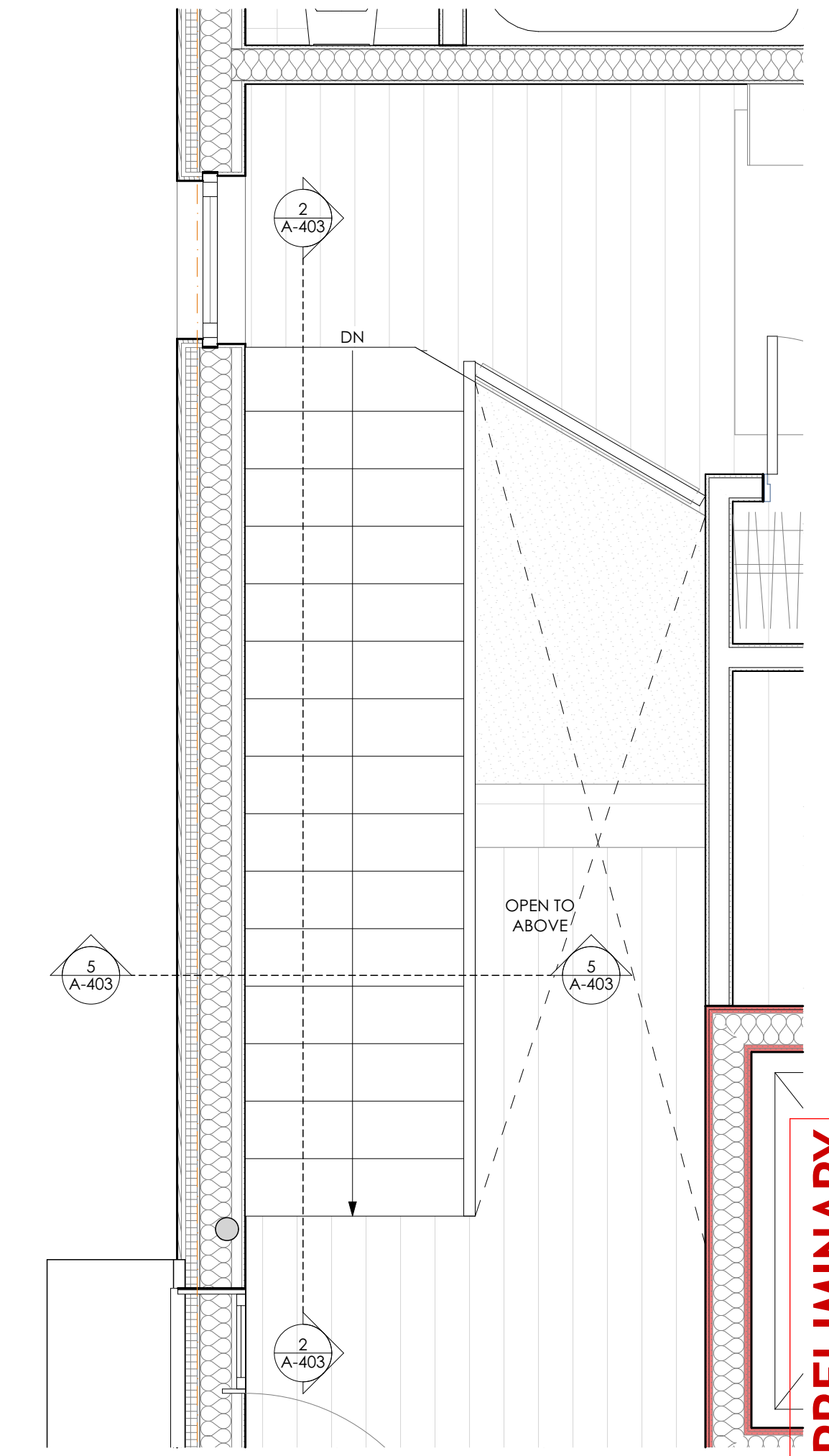
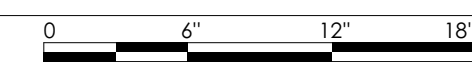
2 TENANT STAIR SECTION
SCALE: 1/2" = 1'-0"



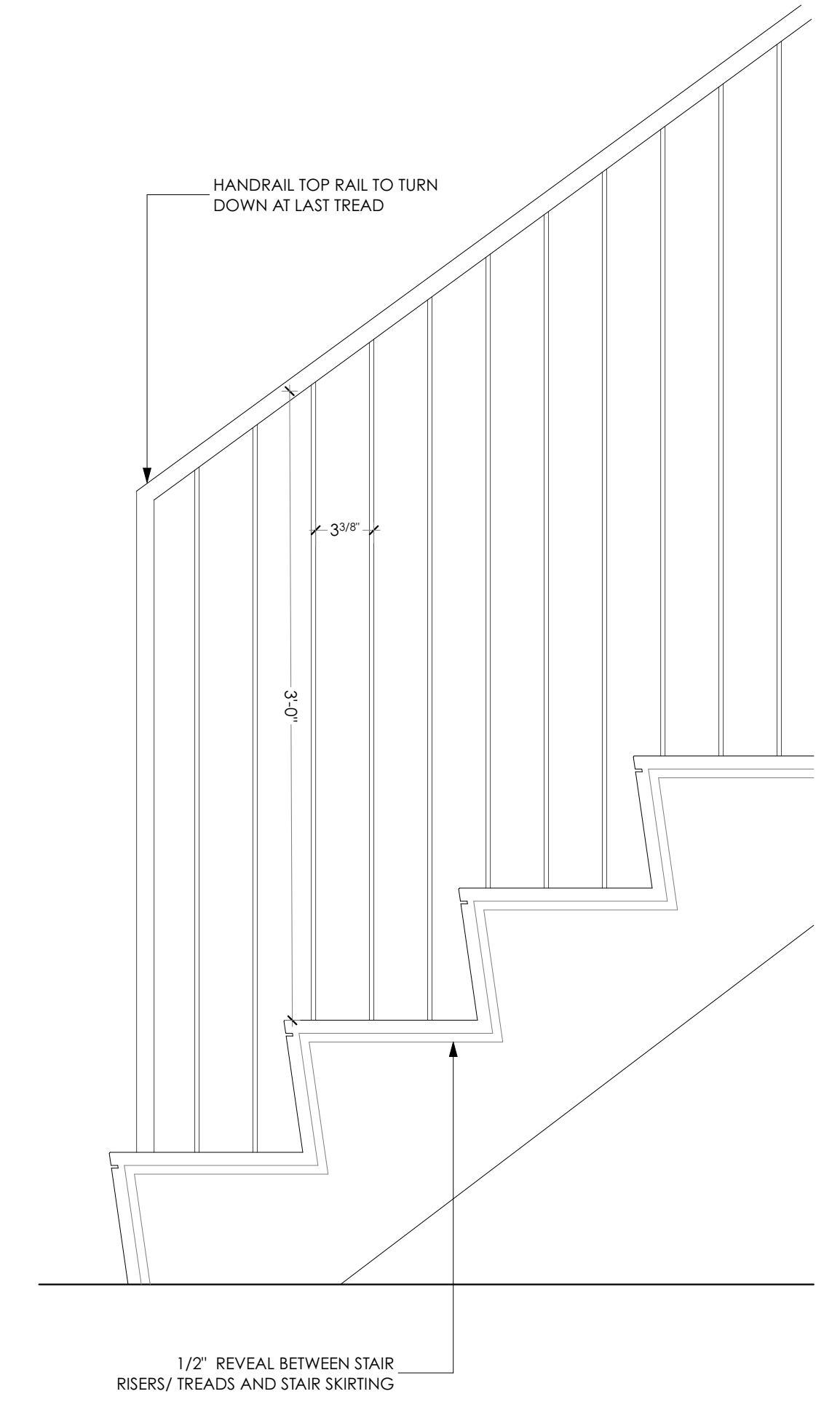
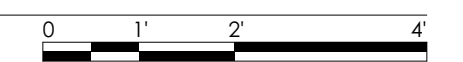
6 HANDRAIL SECTION DETAIL
SCALE: 3" = 1'-0"



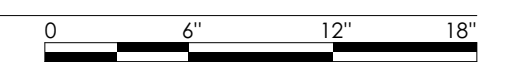
5 STAIR CROSS SECTION
SCALE: 1 1/2" = 1'-0"



1 TENANT STAIR PLAN
SCALE: 1/2" = 1'-0"



4 STAIR ELEVATION
SCALE: 1 1/2" = 1'-0"



PRELIMINARY
NOT FOR CONSTRUCTION

TENANT STAIR DETAILS

Brady Residence
Jim and Julia Brady
9 Moody Street Portland ME 04101

ARCHITECT
DRAFTSPERSON:
PJ/J/04
PJ/J/18
3/7/18
PROJECT STATUS:
90% CD'S

CONSULTANT:

SUBMISSIONS:
ISSUE DATE
001 12/03/2017
002 03/07/2018

DESCRIPTION
CITY REVIEW
REVISOR/PER CITY REVIEW COMMENTS

ISSUE NUMBER
CHANGE NUMBER
CADA

CHANGES THIS ISSUE
ID DESCRIPTION

CALEB JOHNSON
STUDIO
110 EXCHANGE ST. 2ND FLOOR, PORTLAND, ME 04101
1.207.263.9777