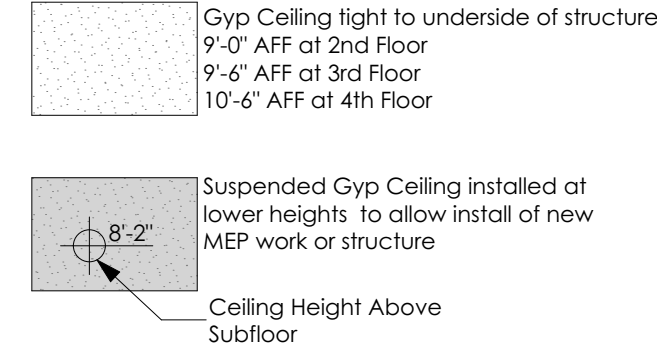


RCP GENERAL NOTES

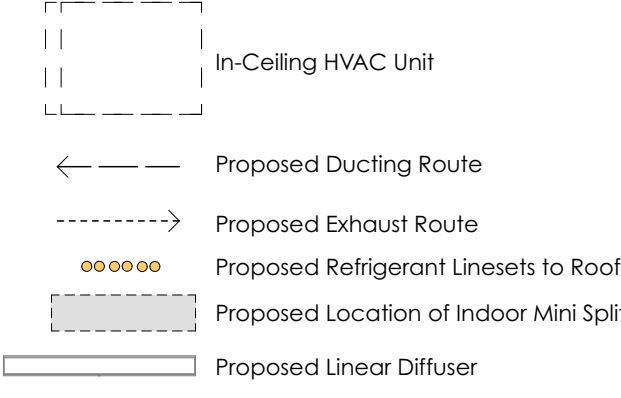
- All sprinkler piping is to be concealed above ceiling and provide fully recessed heads with the following exceptions:
 - Where wall mounted to serve rooms, heads may be semi-recessed.
 - In locations where no finished ceiling exists
- For light fixtures, see Drawings prepared for by Greg Day Lighting under separate cover
- All access panels through drywall to be Baucó Plus II mud-in type unless otherwise noted
- Ceiling Tags are from top of subfloor. For clear floor heights subtract finish assemblies per Partition/Floor assembly schedule on A-601.

CEILING HEIGHT LEGEND



MECH LEGEND

Mechanical, Electrical and Plumbing work is to be design-build by the Contractor. The Architect has made basic assumptions for size and space requirements and locations for incoming service. Contractor is to review and bring to the Architect's attention if additional information is required.



FIRE ALARM DEVICE KEY

- Sprinkler Head (Basis of design and location to be provided by GC)
- Carbon Monoxide Detector
- *Smoke Detector (Interconnected)
- *All sleeping rooms are to be provided with combination smoke and carbon monoxide detectors

FIRE ALARM GENERAL NOTES:

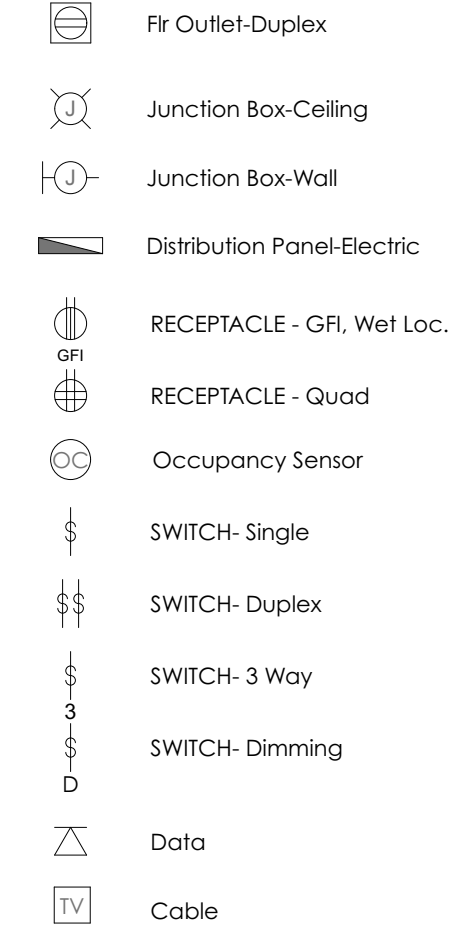
1. Drawings herein show general intent for placement of Fire Alarm devices. Fire Alarm contractor is responsible for quantities and locations as required by building code. Design shall also comply with Portland City Code Chapter 10 and Fire Department Regulations. Refer to Specifications for additional requirements
 2. Fire Alarm Contractor shall submit shop drawings for Architect's review and obtain Fire Alarm Permit from the City of Portland.

ELECTRICAL GENERAL NOTES

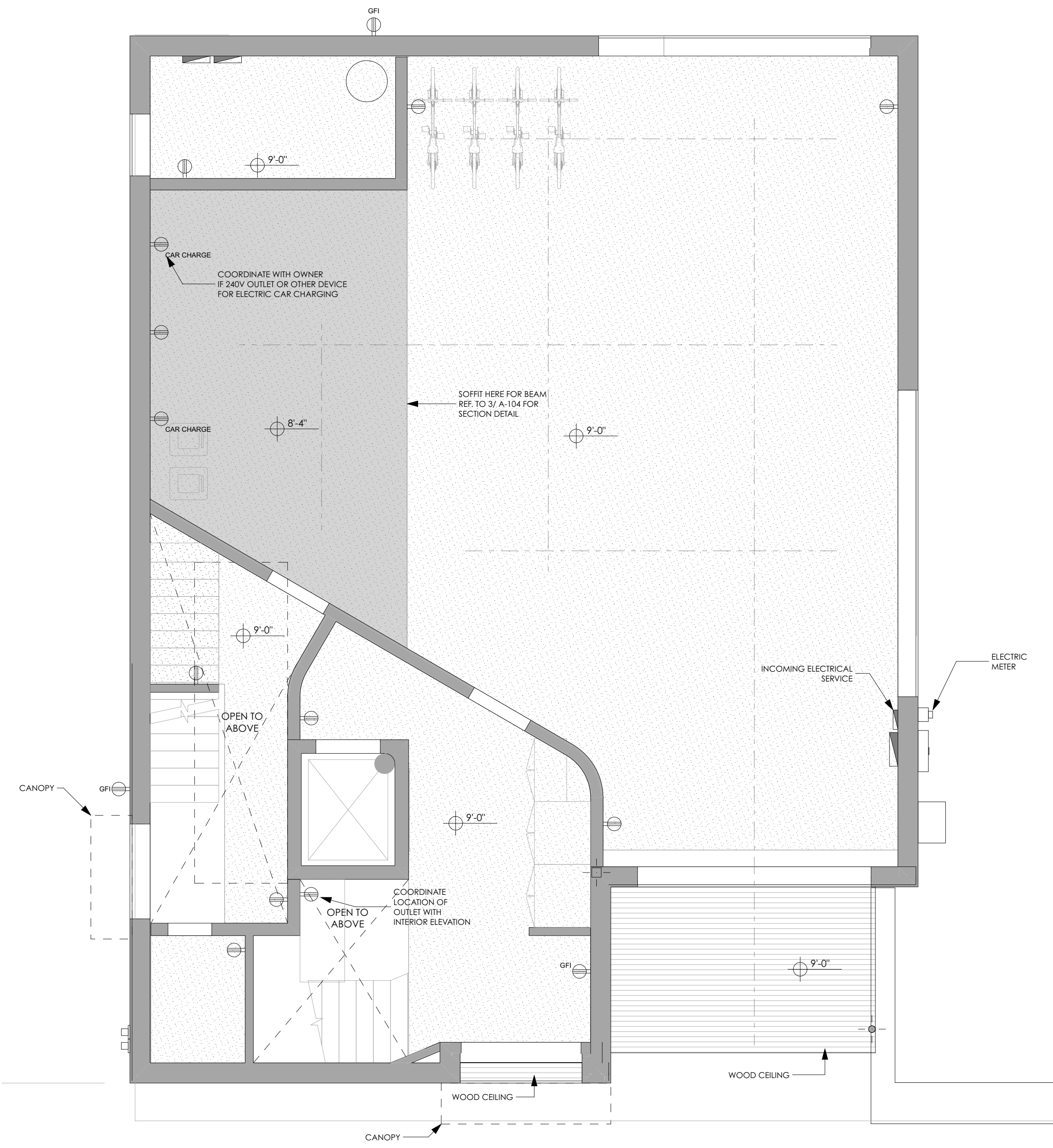
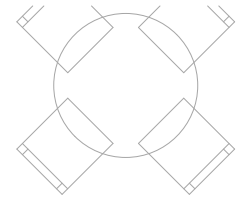
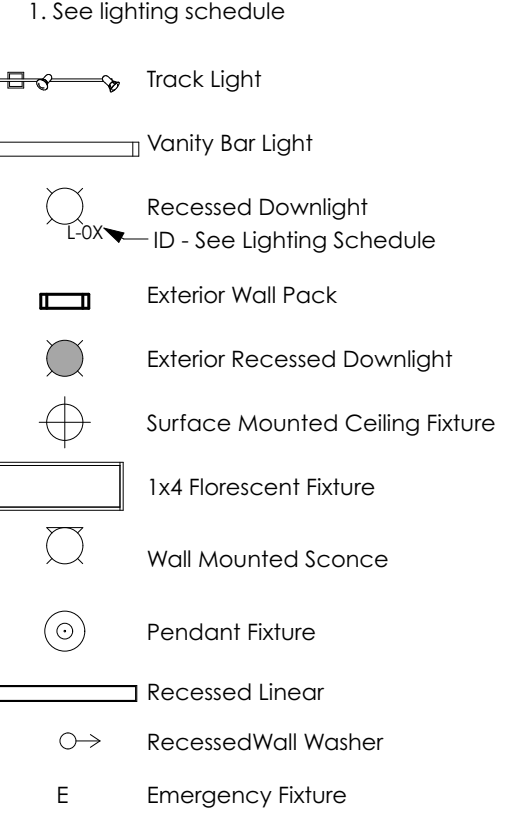
- Electrical to be Design Build by Contractor and coordinated with Owner based on the design intent shown in these drawings. All new work is to be installed in conformance with NFPA 70 and all other applicable codes. Refer to performance specifications for more information.
- Provide white cover plates, switches and outlets throughout. Basis of design is Designer Series by Lutron.
- Contractor to coordinate all convenience outlets with Owner.
- Contractor to coordinate with Owner for Wifi/Smart devices for home automation.
- Lighting design is under the purview of Greg Day Lighting (207-671-5551). Refer to drawings under separate cover for details including switching.

ELECTRICAL LEGEND

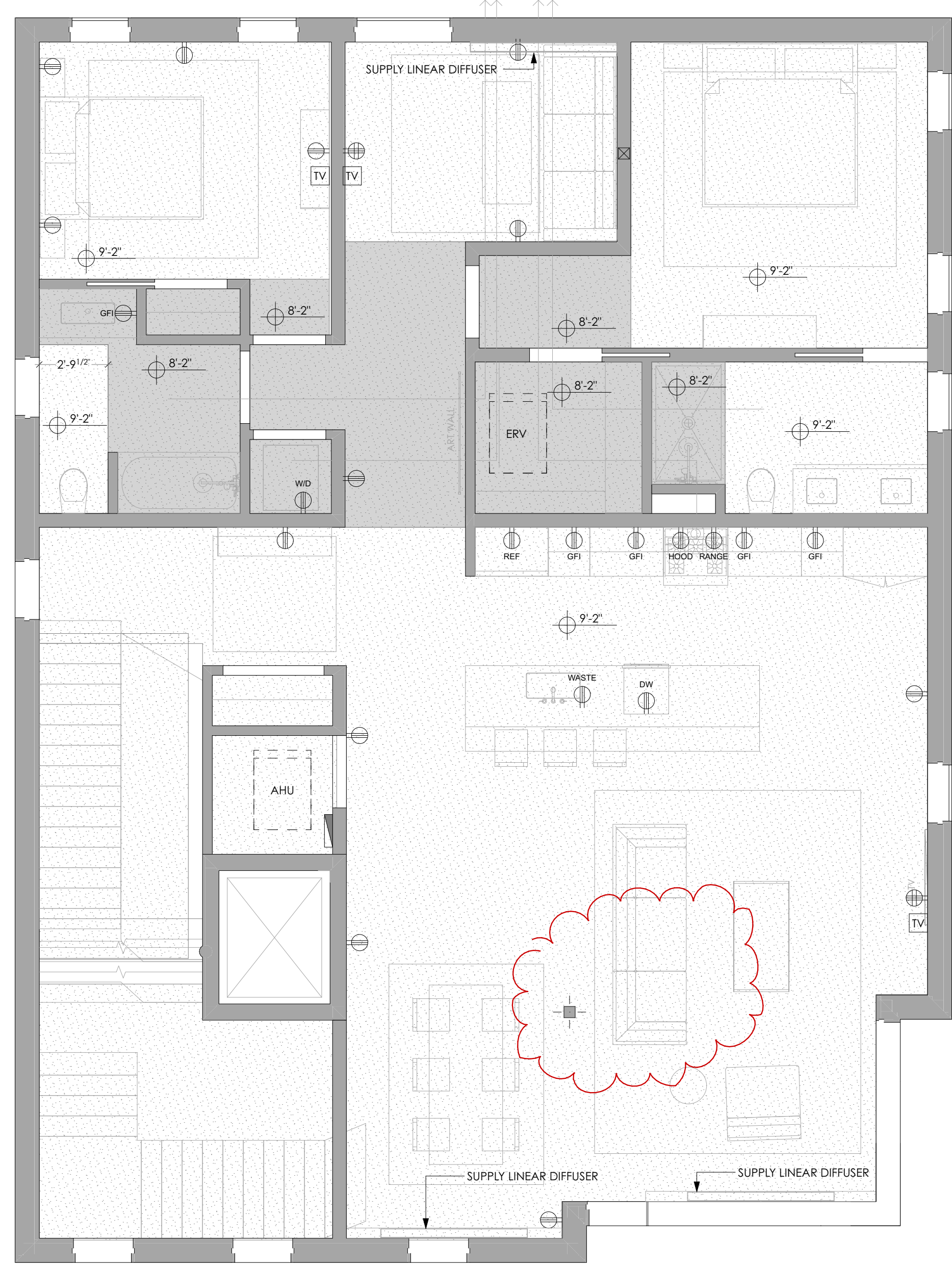
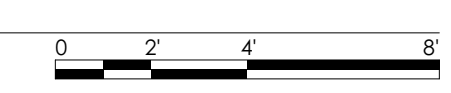
1. Device locations on plans are shown to provide Architect's design intent. Locations, spacing, etc are to be verified by the Electrical design-build and are to follow all local codes as required. Consult with Architect for required clarifications



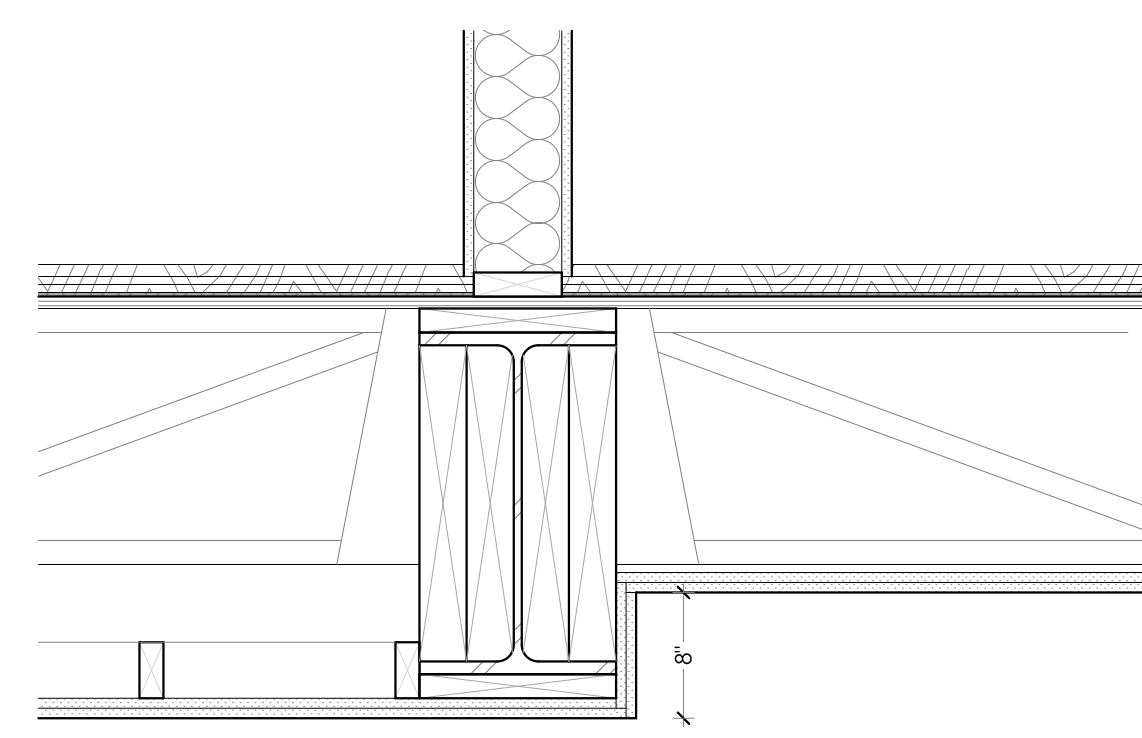
LIGHT FIXTURE TYPE LEGEND



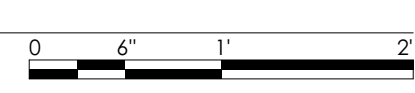
① 1ST FLOOR REFLECTED CEILING PLAN
SCALE: 1/4" = 1'-0"



② 2ND FLOOR REFLECTED CEILING PLAN
SCALE: 1/4" = 1'-0"



③ SOFFIT DETAIL AT GARAGE CEILING
SCALE: 1" = 1'-0"



PRELIMINARY
NOT FOR CONSTRUCTION

Brady Residence

Jim and Julia Brady
9 Moody Street Portland ME 04101

ARCHITECT
DRAFTSPERSON:
PJ/J/04
3/7/18

PROJECT STATUS:
90% CD's

CONSULTANT:

SUBMISSIONS:

ISSUE	DATE	DESCRIPTION
001	12/03/2017	CITY REVIEW
002	03/02/2018	REVISOR PER CITY REVIEW COMMENTS

CHANGES THIS ISSUE

ID	DESCRIPTION

ISSUE NUMBER
001
002