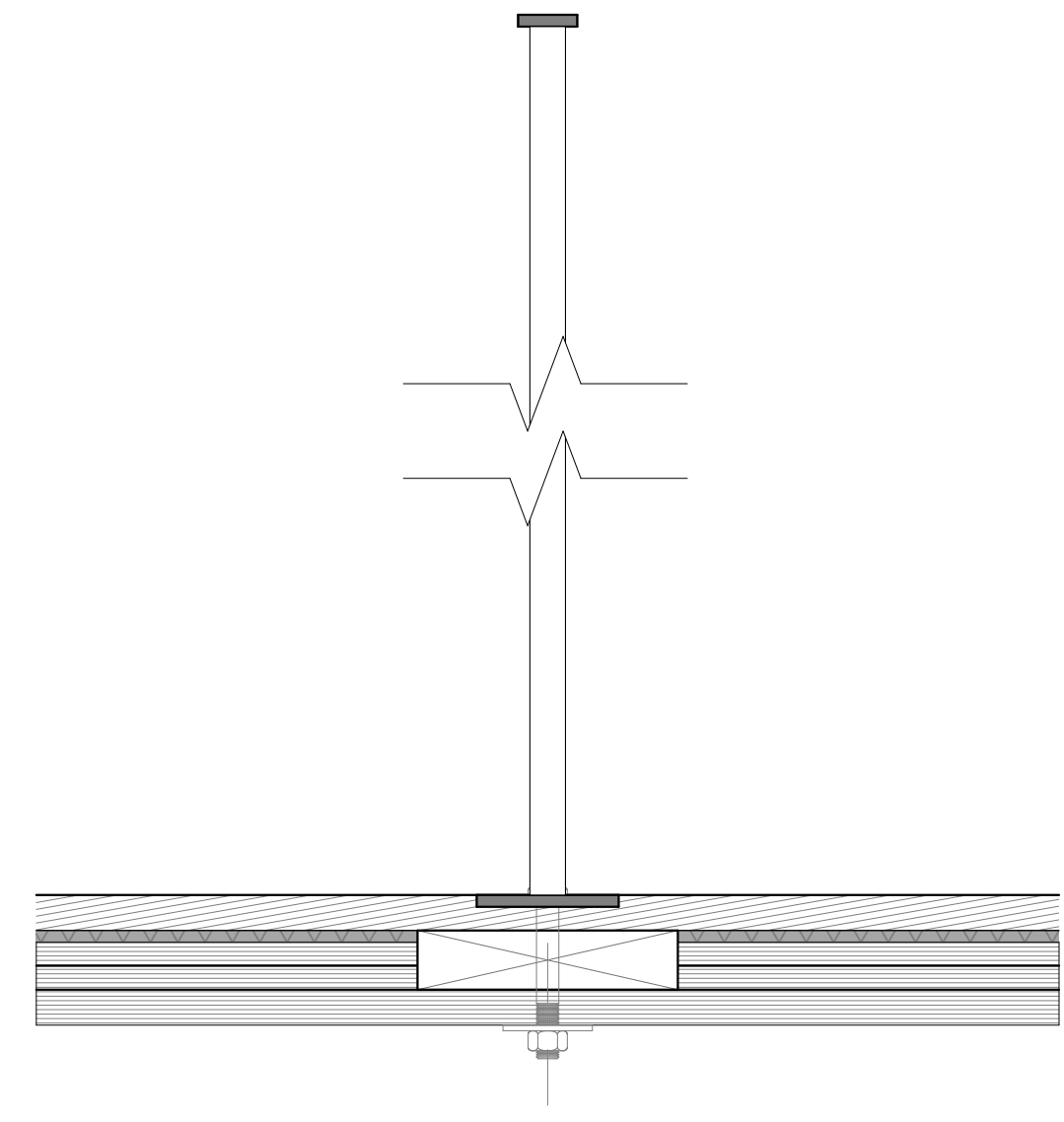
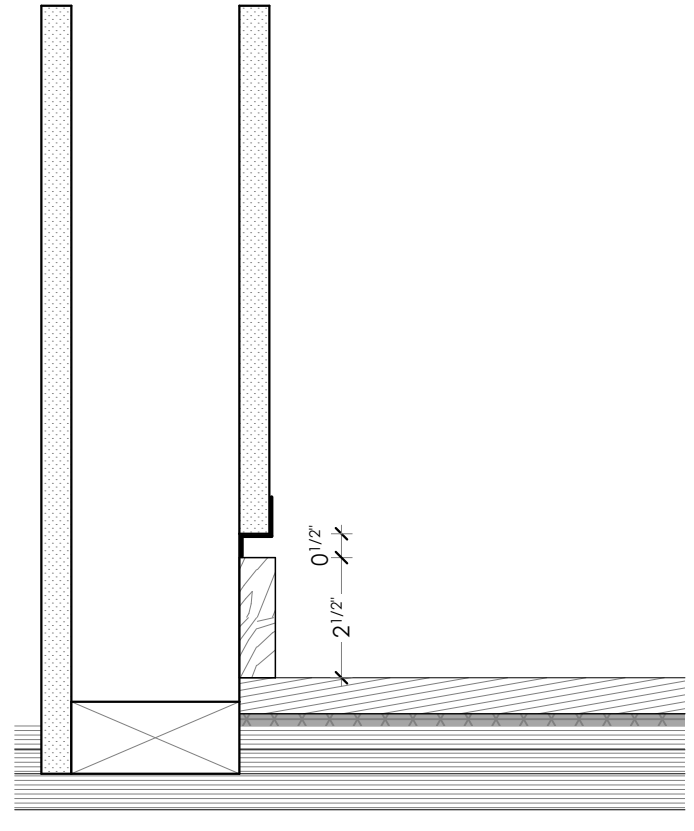
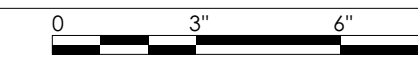


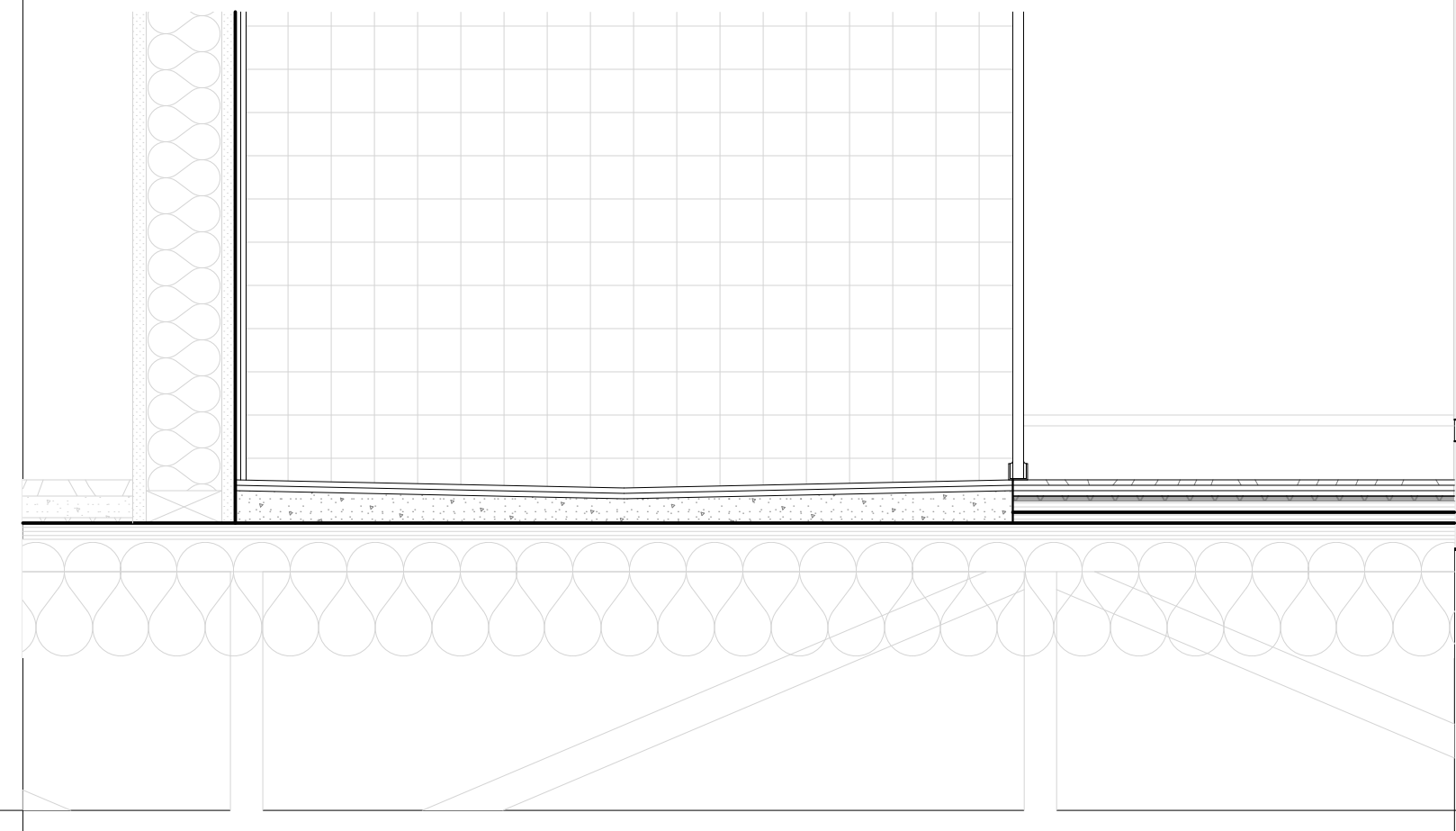
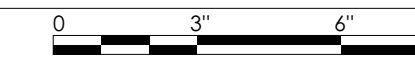
12 DROPPED CEILING AT AHU - TYP.
SCALE: 1" = 1'-0"



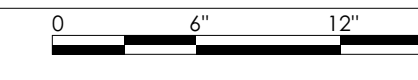
6 BASE SECTION DETAIL - TYP.
SCALE: 3" = 1'-0"



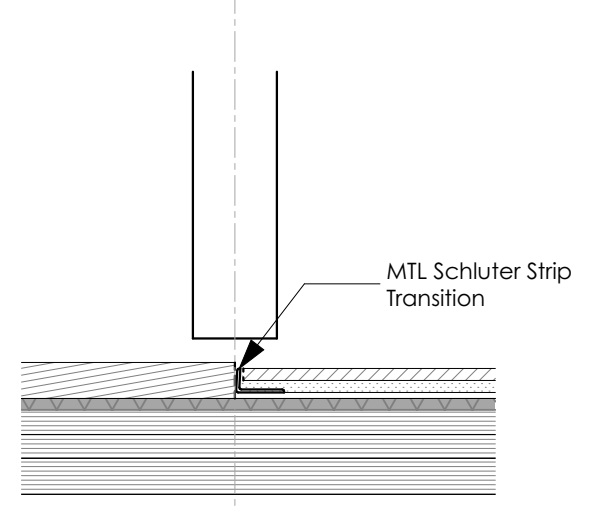
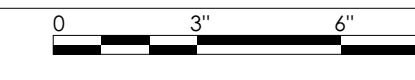
3 BASE SECTION DETAIL - TYP.
SCALE: 3" = 1'-0"



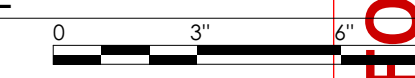
5 FLUSH SHOWER PAN SECTION DETAIL
SCALE: 1 1/2" = 1'-0"



2 BASE ELEVATION DETAIL AT OPENING - TYP.
SCALE: 3" = 1'-0"



1 FLOOR TRANSITION DETAIL - WD FLOOR TO TILE
SCALE: 3" = 1'-0"



FOR CITY REVIEW
NOT FOR CONSTRUCTION

SUBMISSIONS:	
ISSUE	DATE
001	12.01.2017
002	12.01.2017

CHANGES THIS ISSUE	
ID	DESCRIPTION

ARCHITECT	
DRAFTEPERSON:	PROJECT STATUS:
PRJ/JJK	25% Construction Docs
1/19/18	

Brady Residence
Jim and Julia Brady
9 Moody Street Portland ME 04101