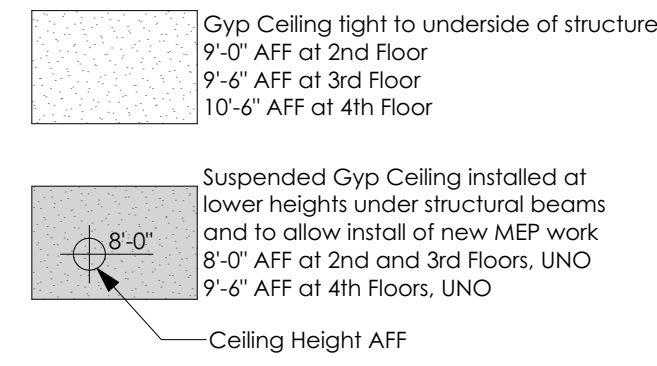


RCP GENERAL NOTES

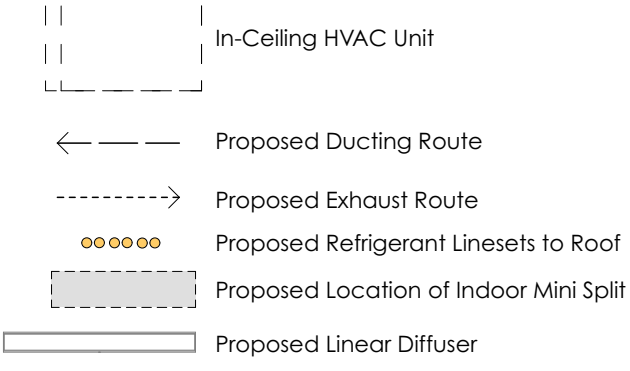
- All sprinkler piping is to be concealed above ceiling and provide fully recessed heads with the following exceptions:
 - Where wall mounted to serve rooms, heads may be semi-recessed.
 - In locations where no finished ceiling exists
- Refer to A-604 for light fixture schedule
- All access panels through drywall to be Bauco Plus II mud-in type unless otherwise noted

CEILING HEIGHT LEGEND

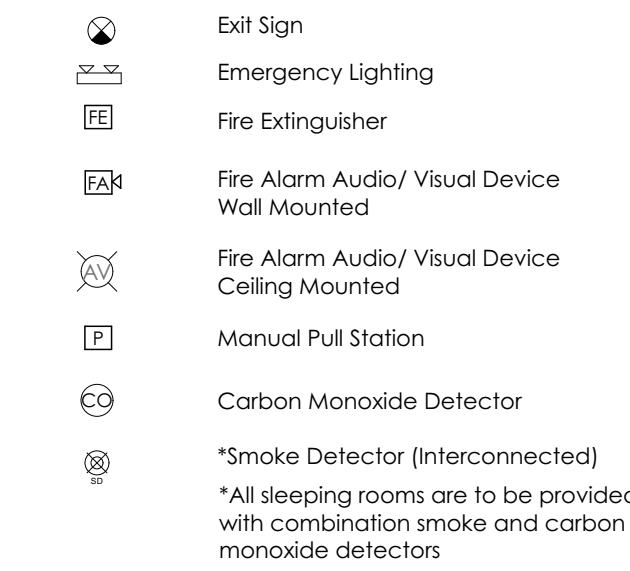


MECH LEGEND

Mechanical, Electrical and Plumbing work is to be design build by the Contractor. The Architect has made basic assumptions for size and space requirements and locations for incoming service. Contractor is to review and bring to the Architect's attention if additional information is required.



FIRE ALARM DEVICE KEY



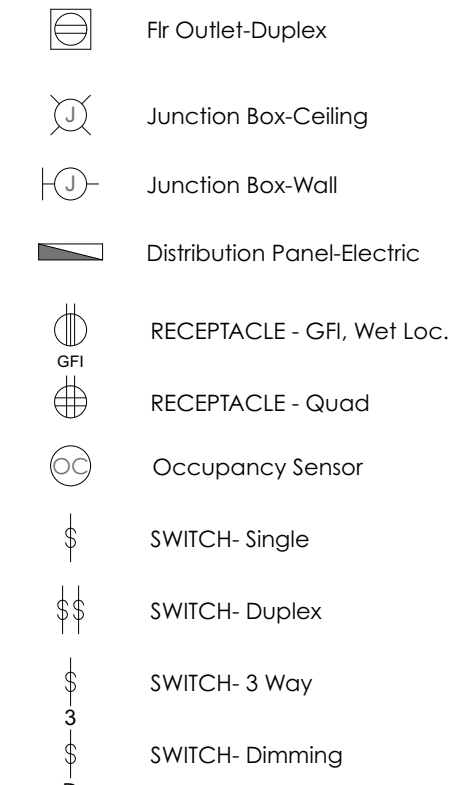
FIRE ALARM GENERAL NOTES:
 1. Drawings herein show general intent for placement of Fire Alarm devices. Fire Alarm contractor is responsible for quantities and locations as required by building code. Design shall also comply with Portland City Code Chapter 10 and Fire Department Regulations. Refer to Specifications for additional requirements
 2. Fire Alarm Contractor shall submit shop drawings for Architect's review and obtain Fire Alarm Permit from the City of Portland.

ELECTRICAL GENERAL NOTES

- Electrical to be Design Build by Contractor and coordinated with Owner based on the design intent shown in these drawings. All new work is to be installed in conformance with NFPA 70 and all other applicable codes. Refer to performance specifications for more information.
- Provide white cover plates, switches and outlets throughout.

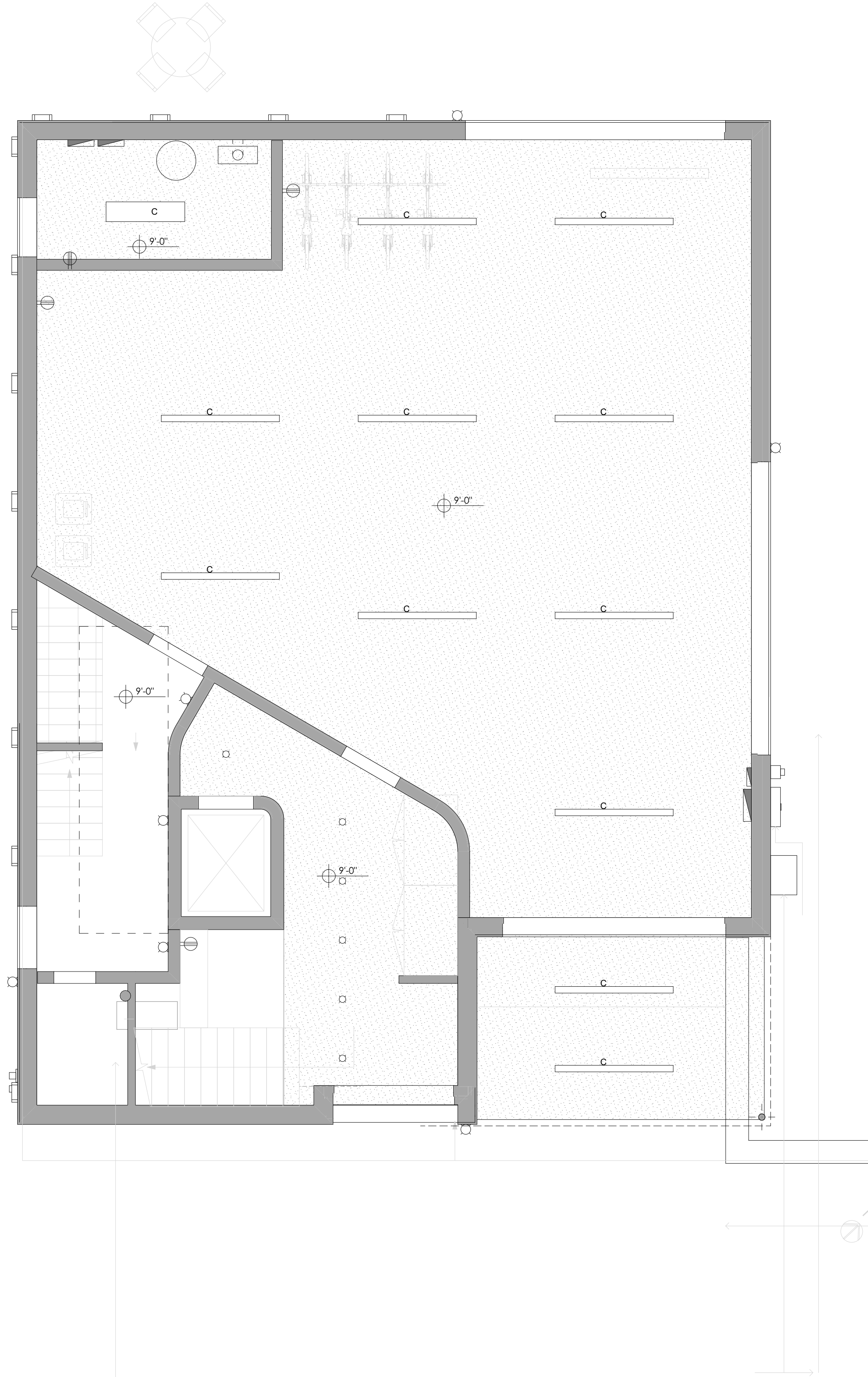
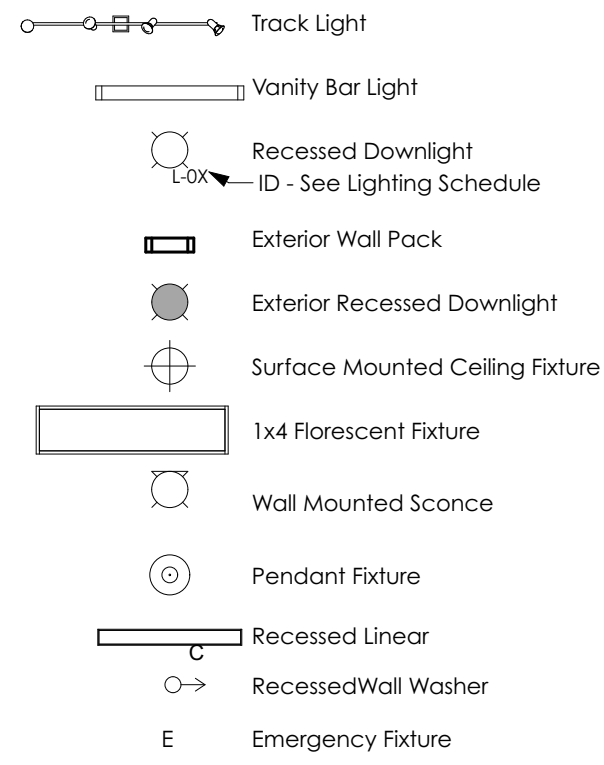
ELECTRICAL LEGEND

1. Device locations on plans are shown to provide Architect's design intent. Locations, spacing, etc are to be verified by the Electrical design-build engineer and are to follow all local codes as required. Consult with Architect for required clarifications

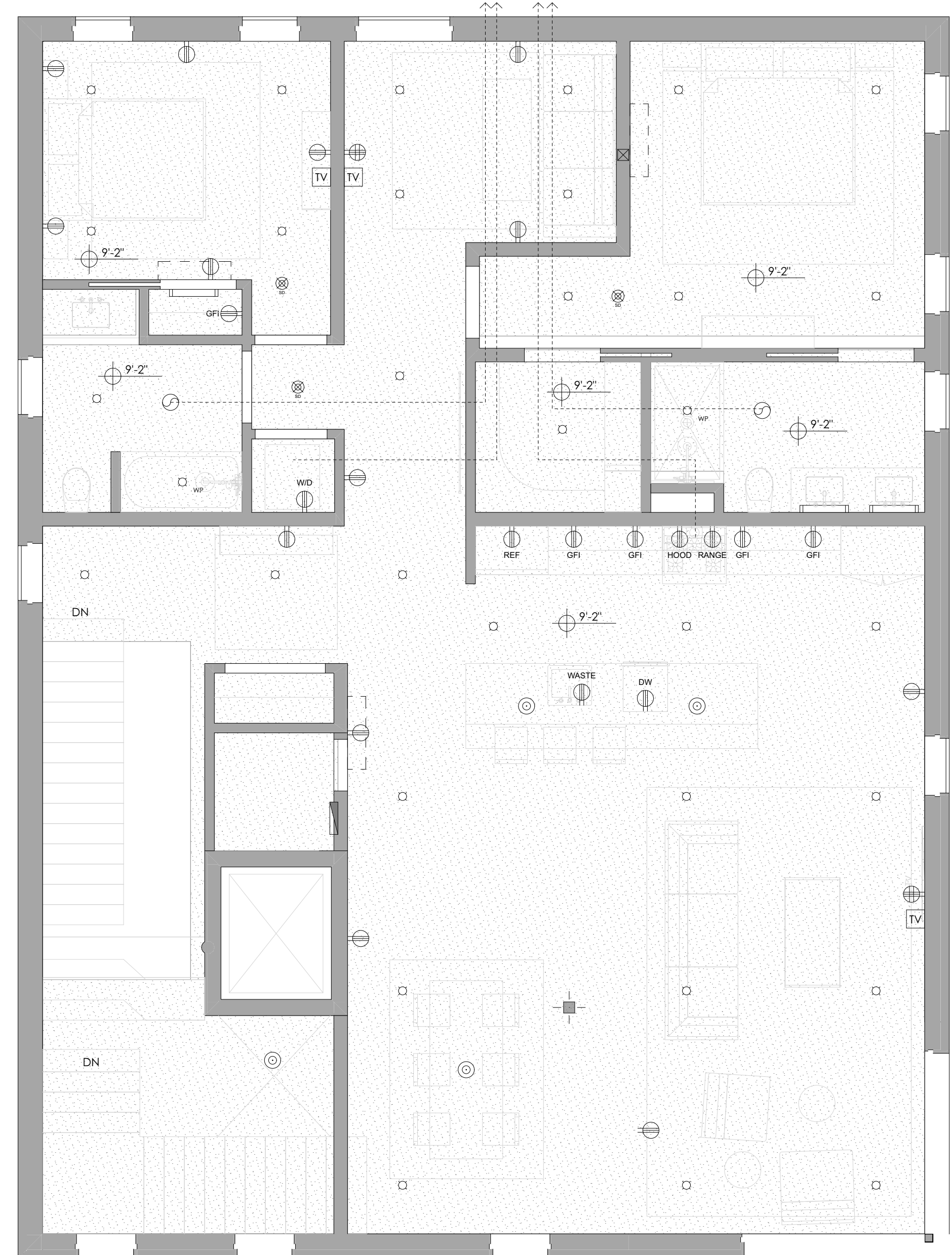
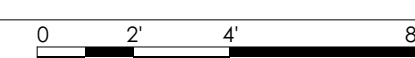


LIGHT FIXTURE TYPE LEGEND

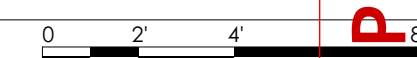
1. See lighting schedule



1 1ST FLOOR REFLECTED CEILING PLAN
 SCALE: 1/4" = 1'-0"



2 2ND FLOOR REFLECTED CEILING PLAN
 SCALE: 1/4" = 1'-0"



PRELIMINARY
 NOT FOR CONSTRUCTION

ID	DESCRIPTION