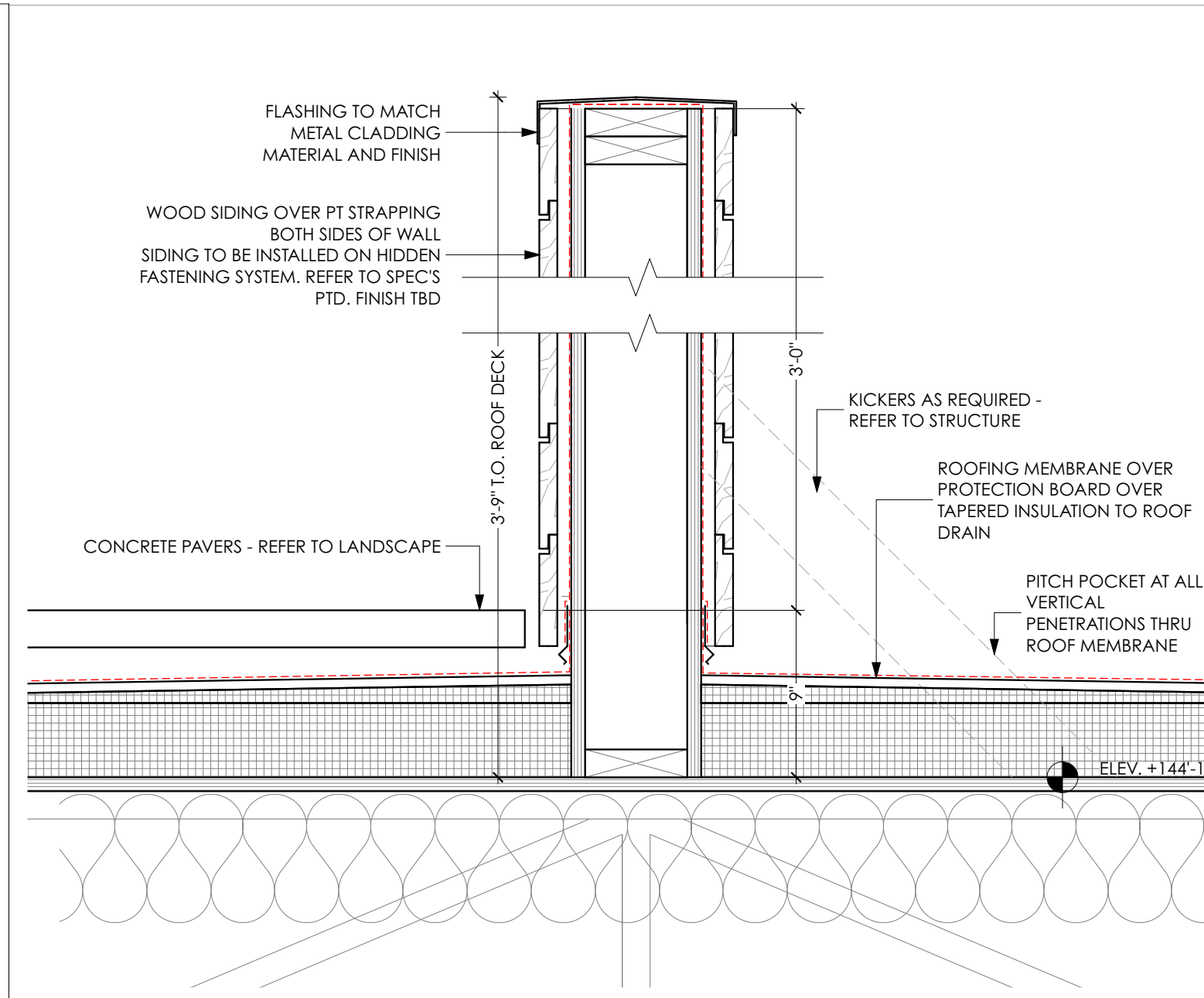
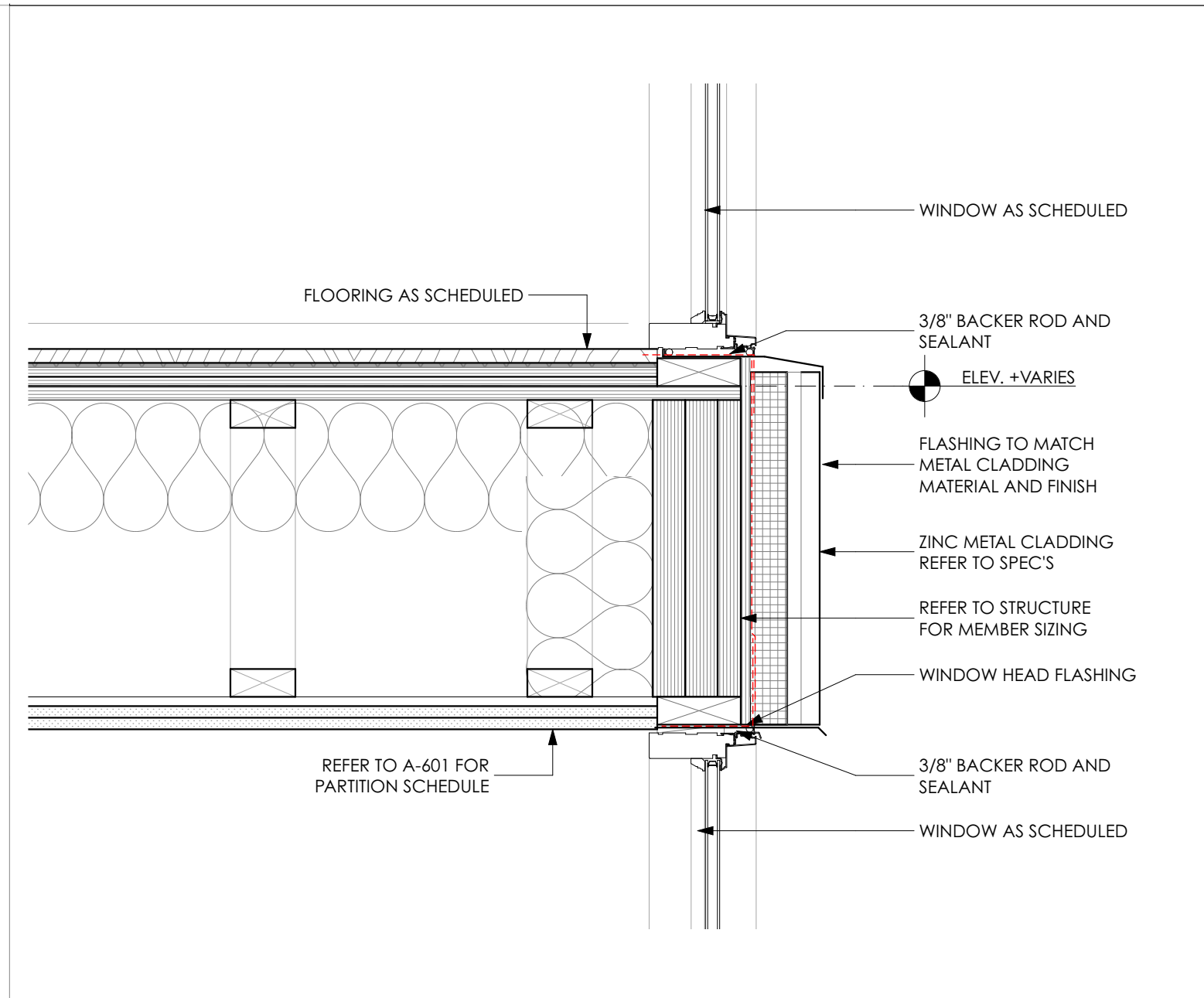


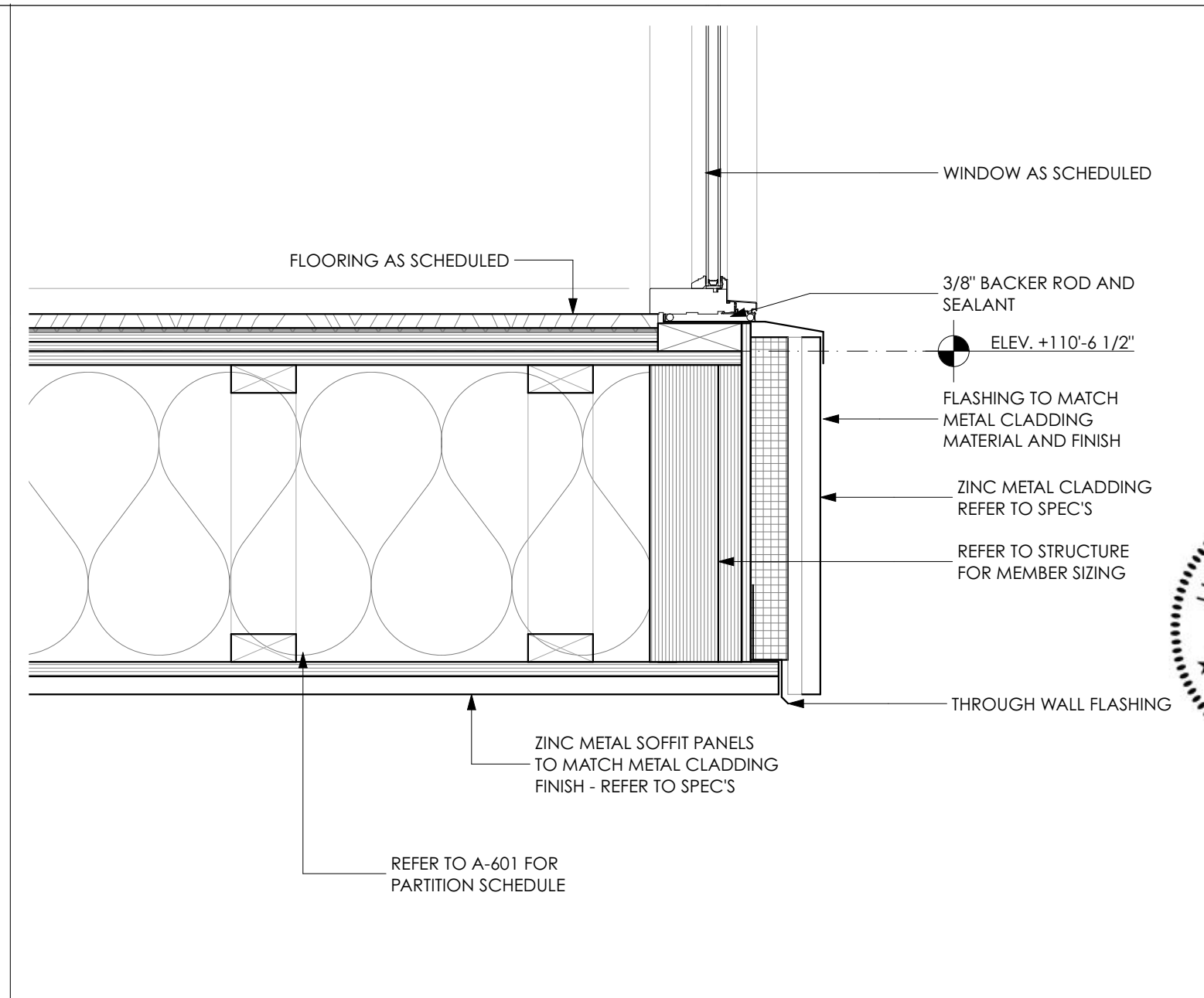
12 BAY WINDOW SOFFIT SECTION DETAIL
SCALE: 1 1/2" = 1'-0"



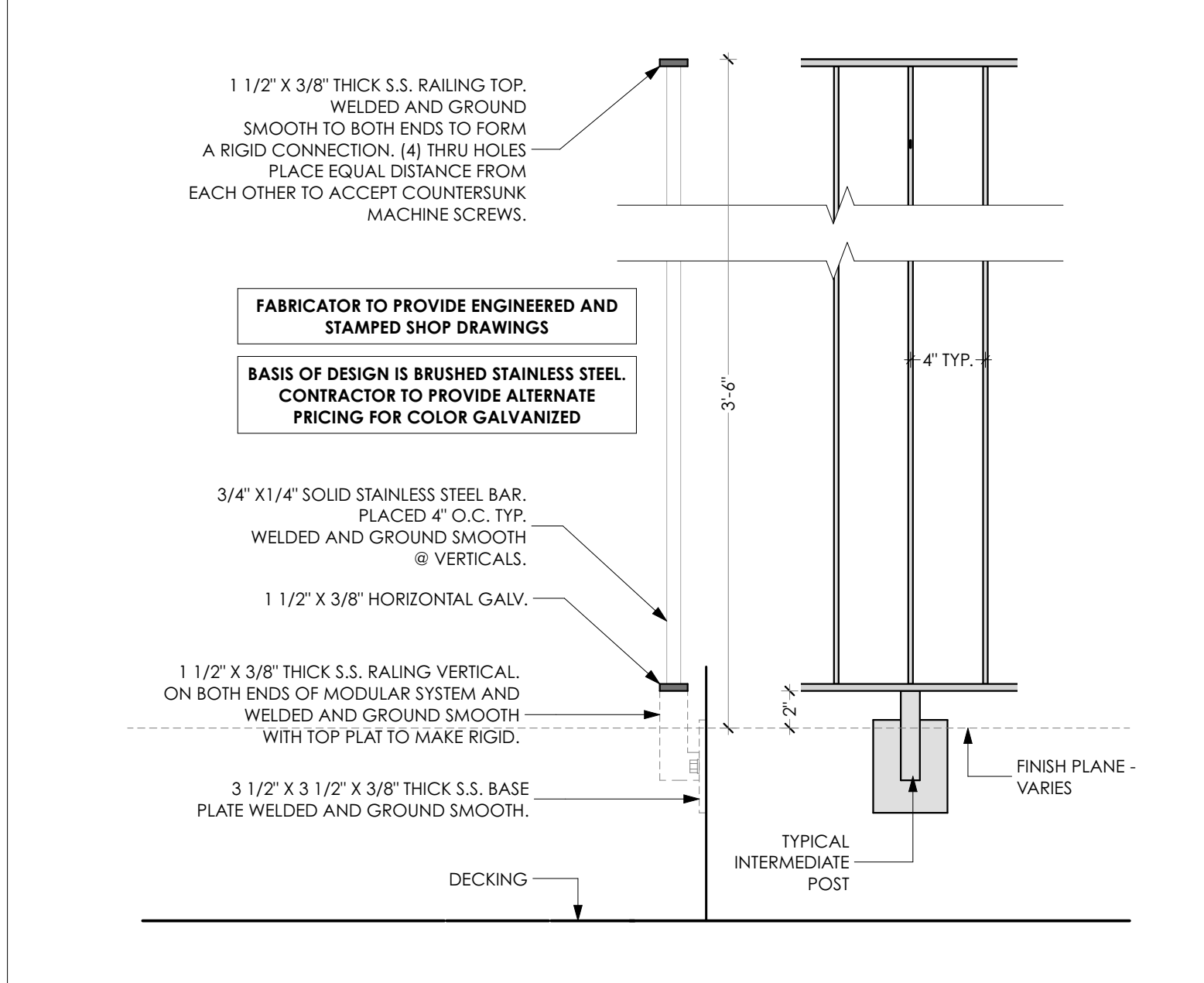
9 ROOF MECHANICAL SCREEN SECTION
SCALE: 1 1/2" = 1'-0"



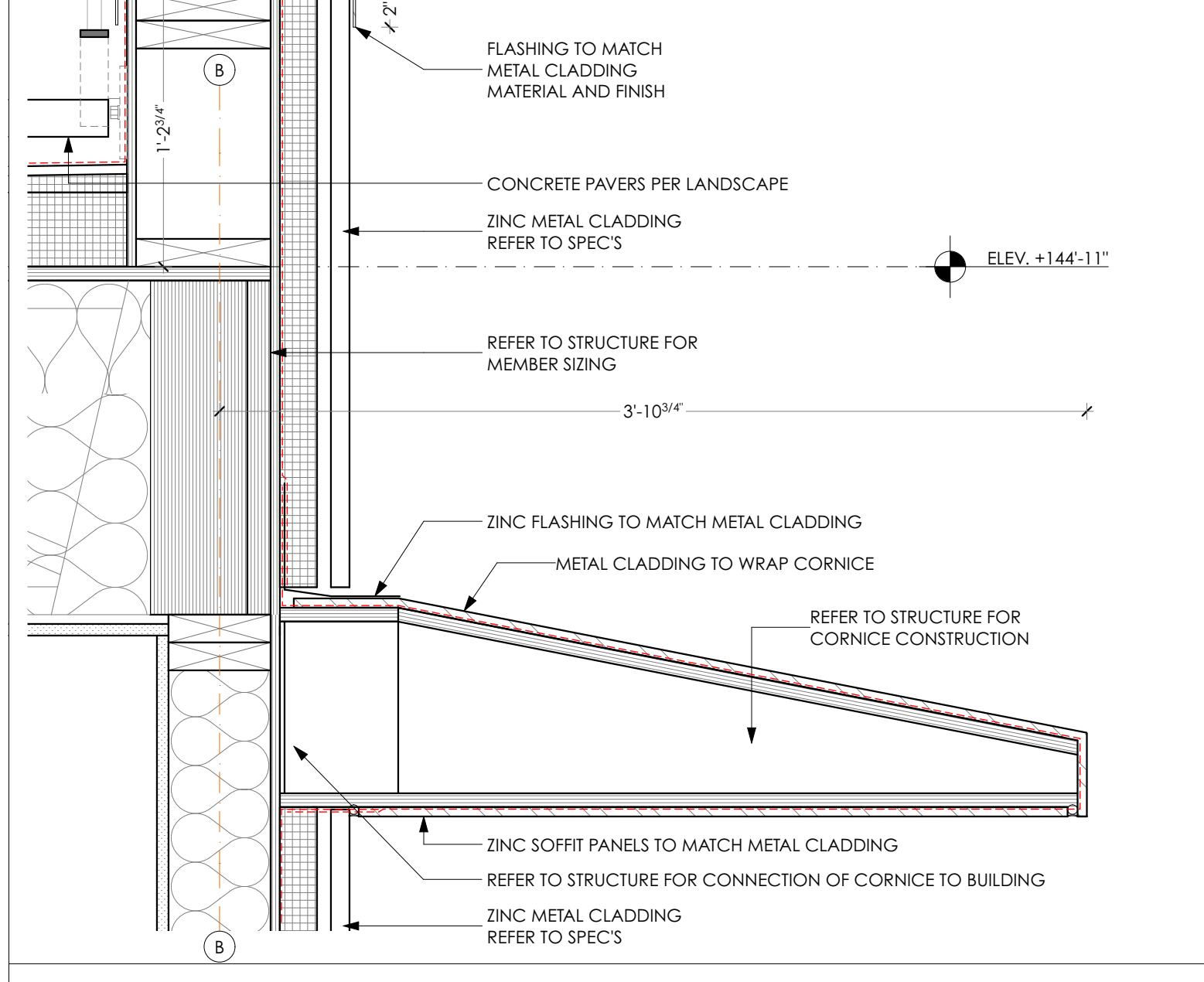
6 WINDOW SILL AND HEAD @ BAY WINDOW SECTION DETAIL
SCALE: 1 1/2" = 1'-0"



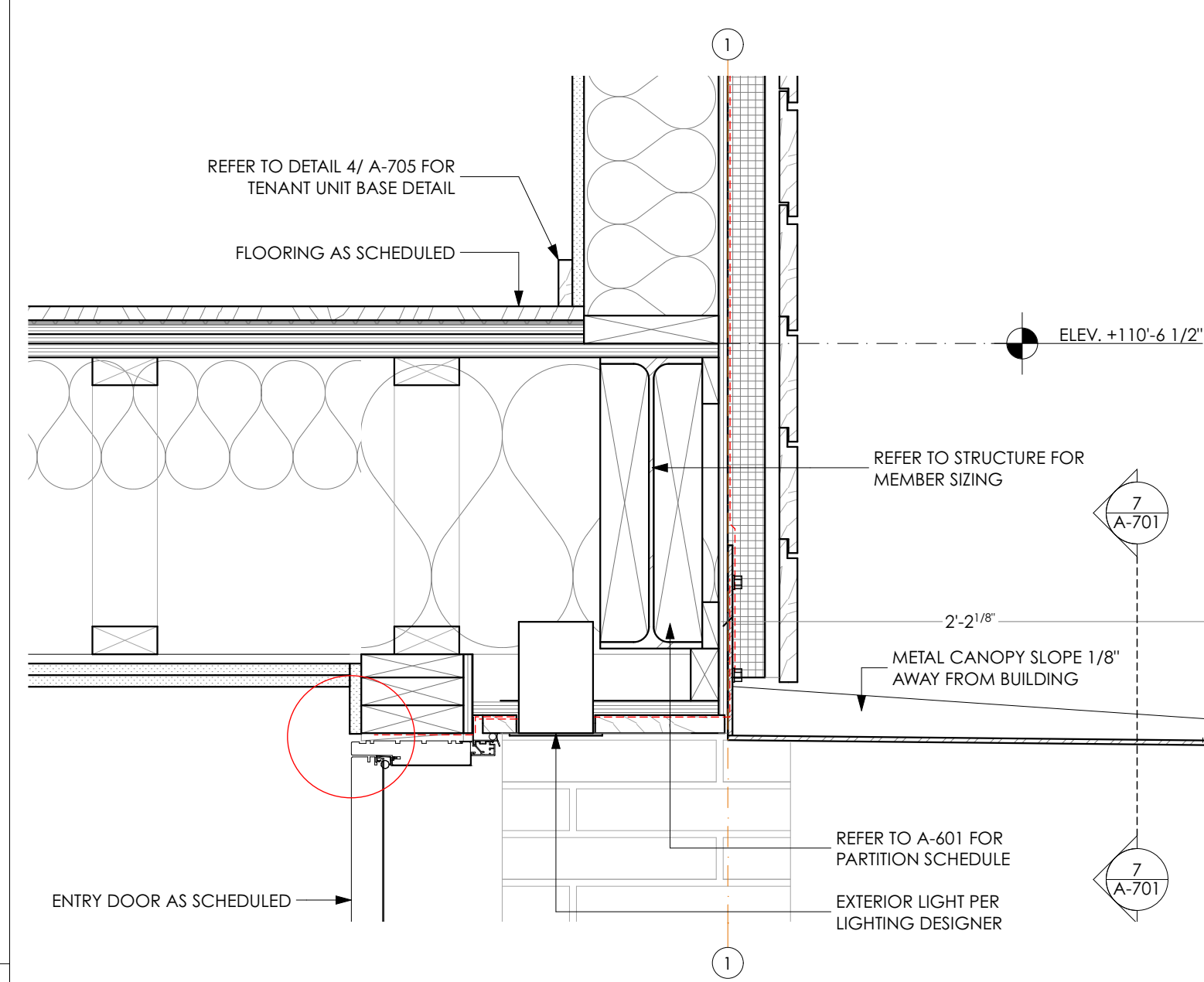
3 BAY WINDOW SOFFIT SECTION DETAIL
SCALE: 1 1/2" = 1'-0"



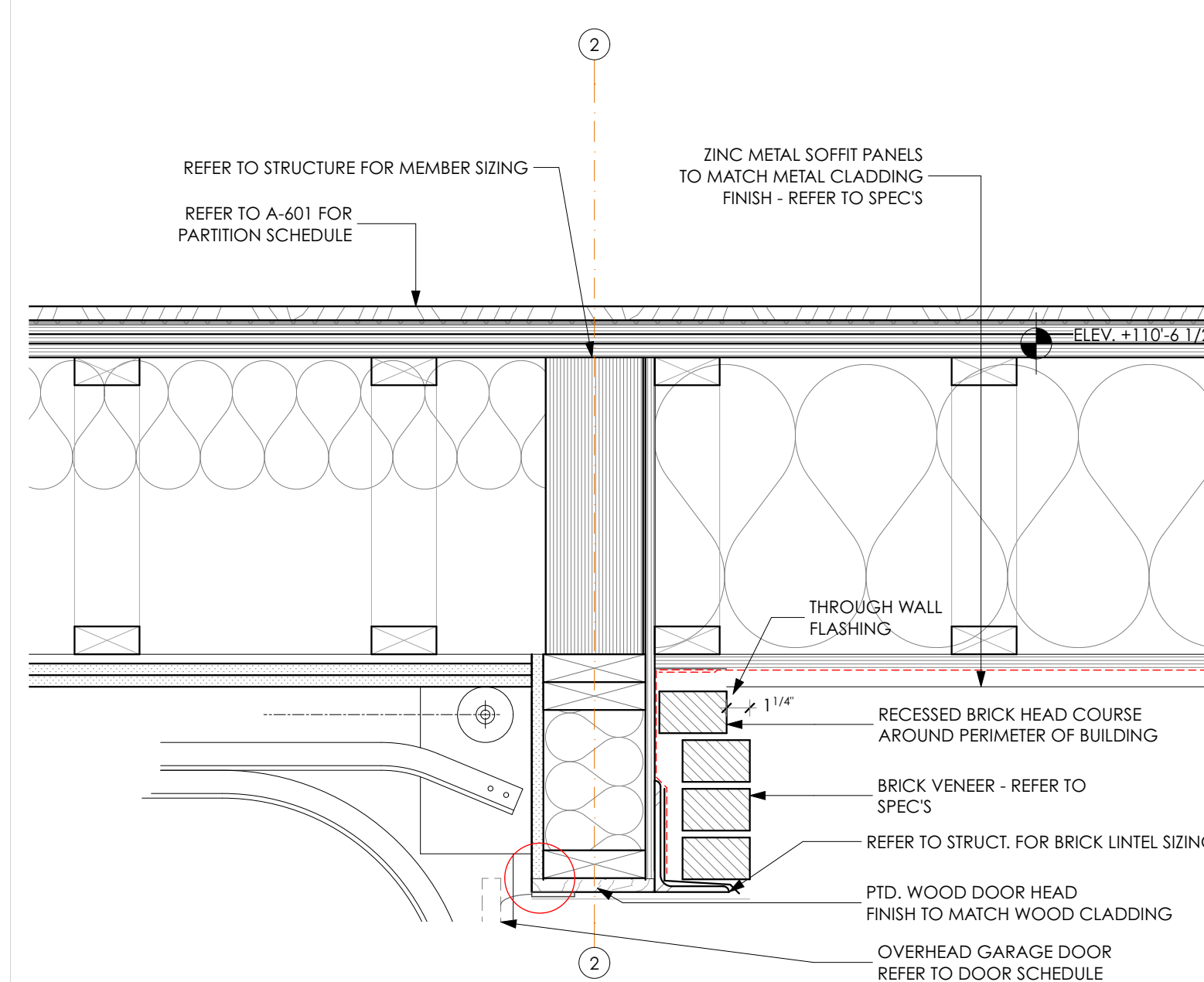
11 ROOF TERRACE GUARDRAIL DETAIL @ WOOD DECKING
SCALE: 1 1/2" = 1'-0"



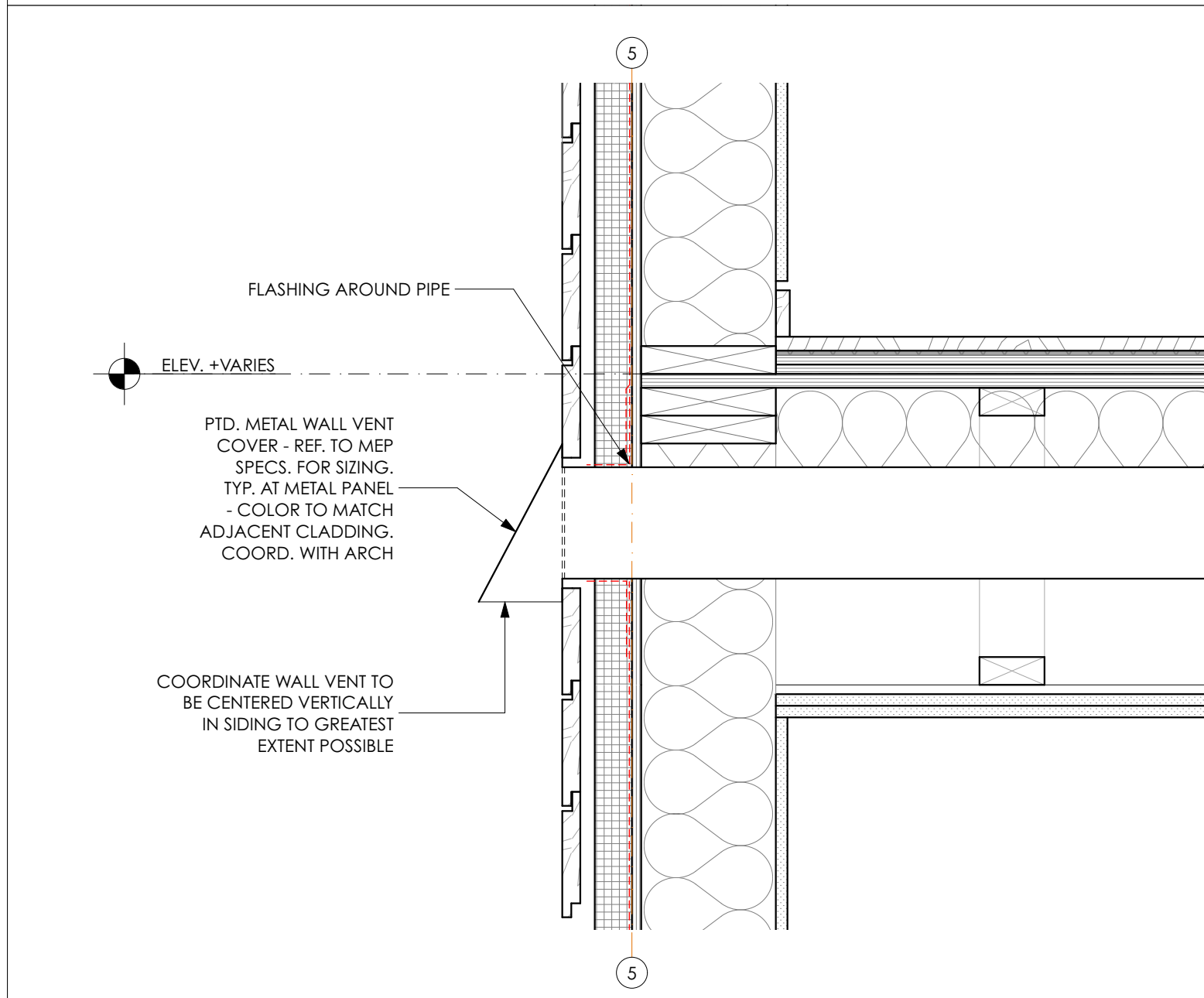
8 EXTERIOR CORNICE @ EAST ELEVATION SECTION DETAIL
SCALE: 1 1/2" = 1'-0"



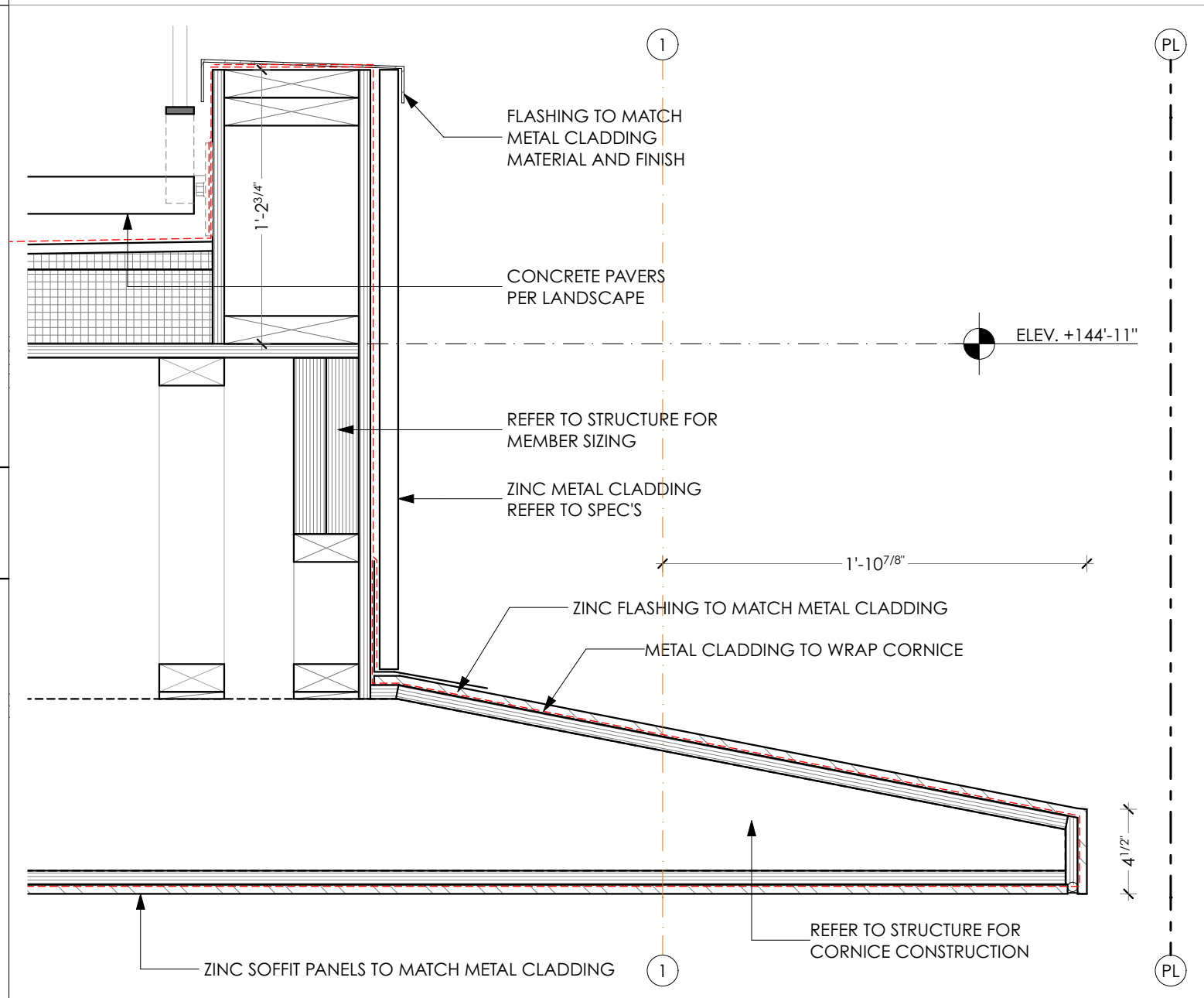
5 MAIN ENTRY DOOR HEAD DETAIL
SCALE: 1 1/2" = 1'-0"



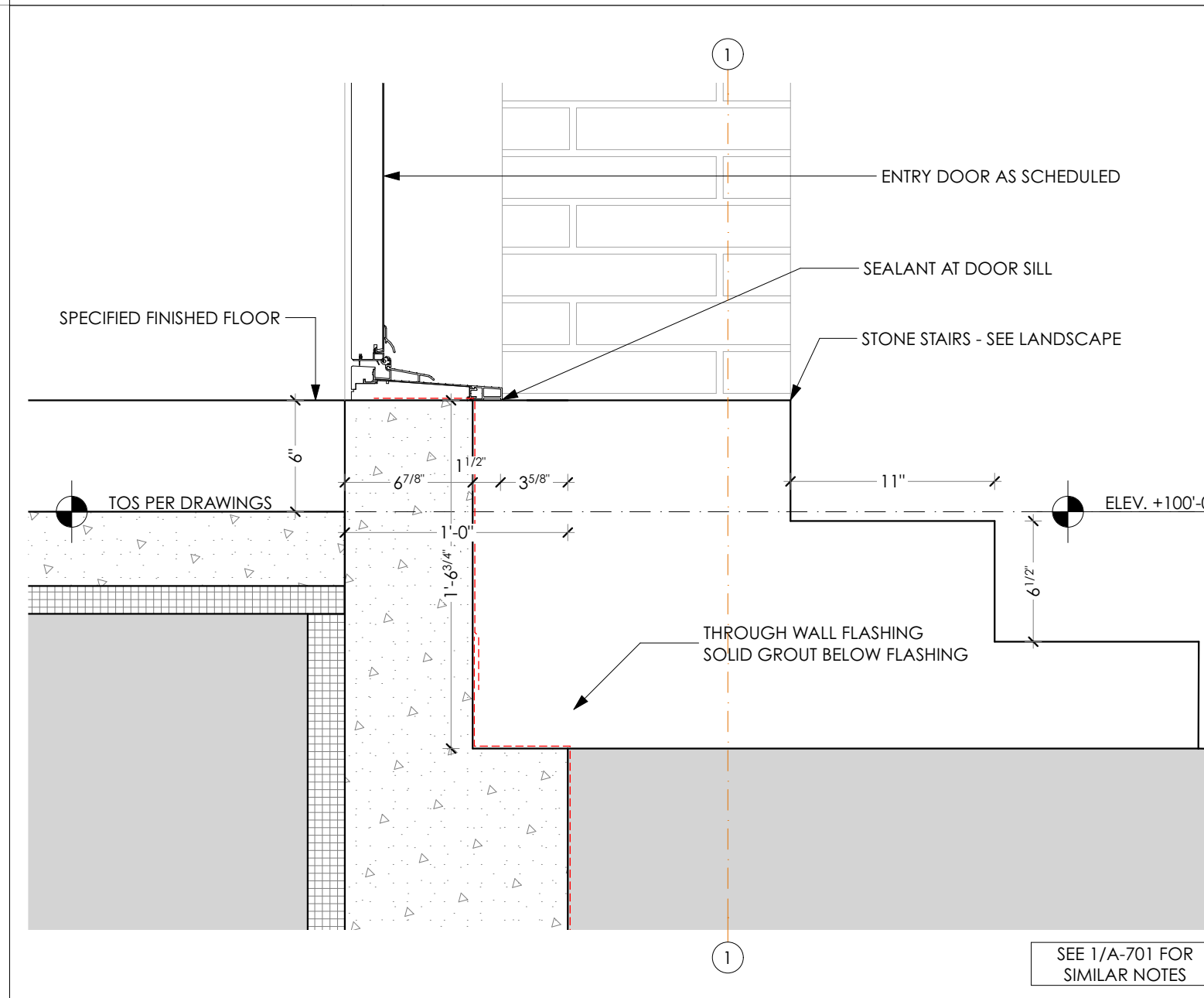
2 MAIN GARAGE DOOR HEAD SECTION DETAIL
SCALE: 1 1/2" = 1'-0"



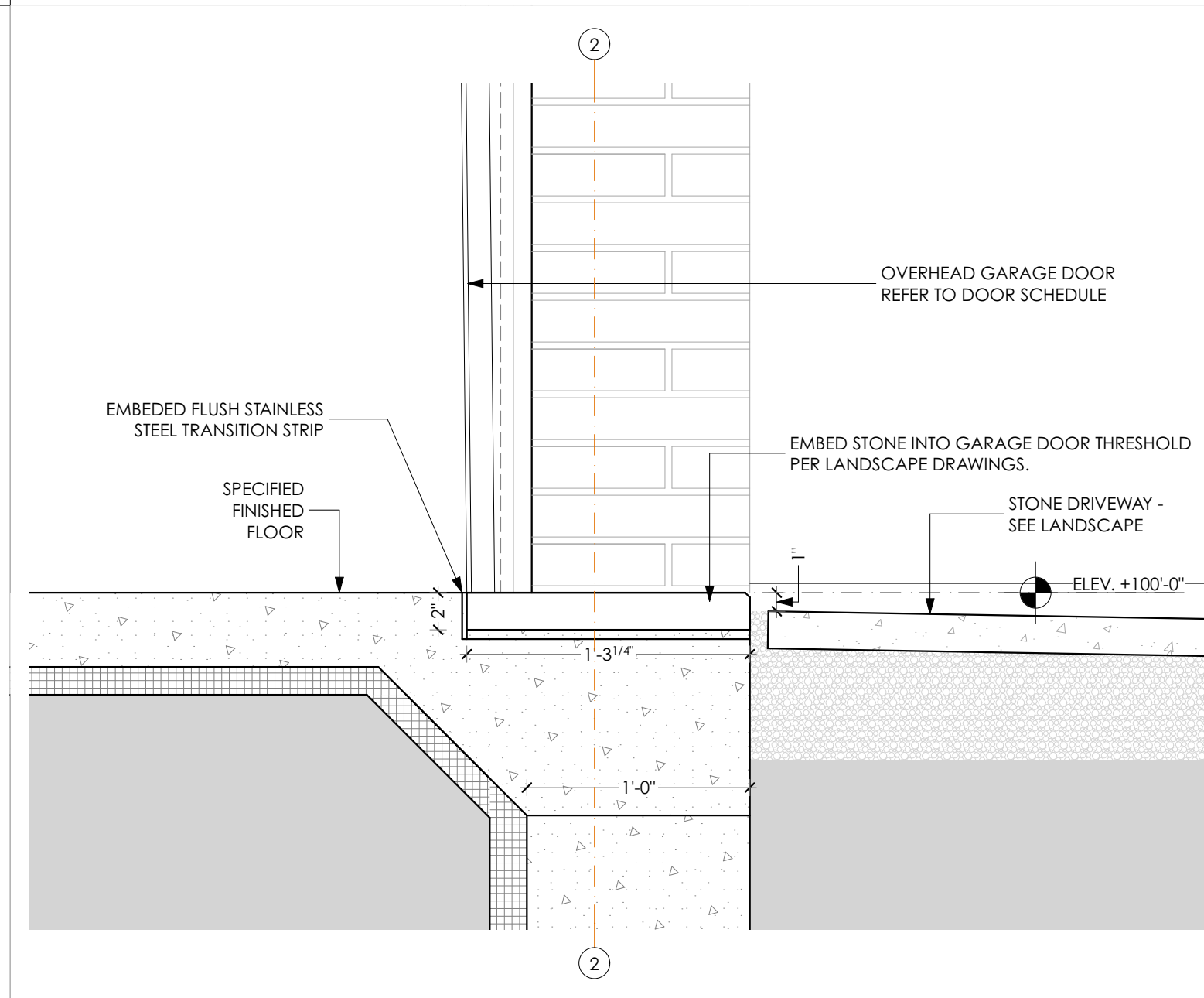
10 VENT / EXHAUST DETAILS
SCALE: 1 1/2" = 1'-0"



7 EXTERIOR CORNICE @ SOUTH ELEVATION SECTION DETAIL
SCALE: 1 1/2" = 1'-0"



4 MAIN ENTRY DOOR SILL DETAIL
SCALE: 1 1/2" = 1'-0"



1 MAIN GARAGE DOOR SILL SECTION DETAIL
SCALE: 1 1/2" = 1'-0"

CALEB JOHNSON
STUDIO
110 EXCHANGE ST. 2ND FLOOR, PORTLAND, ME 04101
1-207-263-9777

REGISTERED ARCHITECT
CALEB M. JOHNSON
No. ARC4209
STATE OF MAINE

ISSUE NUMBER	DATE	DESCRIPTION
001	12/01/2017	CITY REVIEW
002	01/11/2018	PER REVIEW COMMENTS
003	03/21/2018	95% CONSTRUCTION DOCUMENTS FOR BID

FOR CONSTRUCTION

ARCHITECT
DRAFTSPERSON:
PJ/J/CLK
PROJECT STATUS:
04/11/2018
95% CDS FOR BID

Brady Residence
Jim and Julia Brady
9 Moody Street Portland ME 04101

A-703

EXTERIOR DETAILS