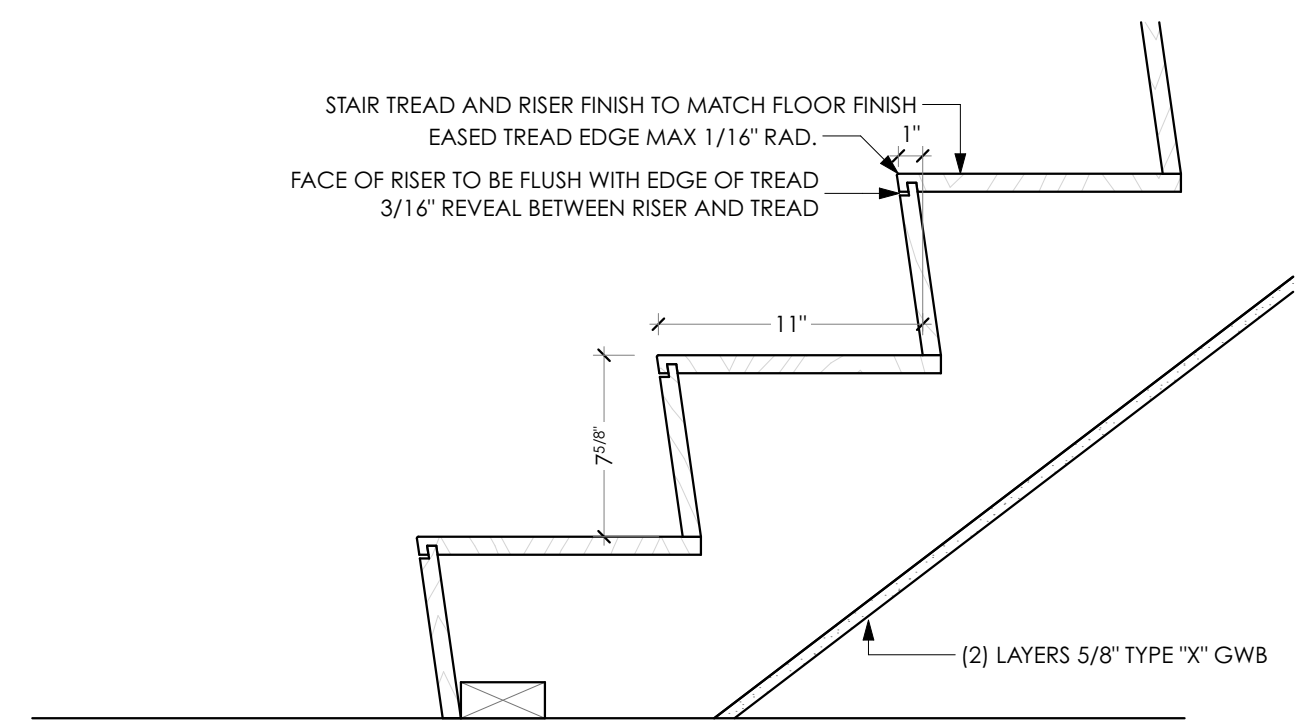
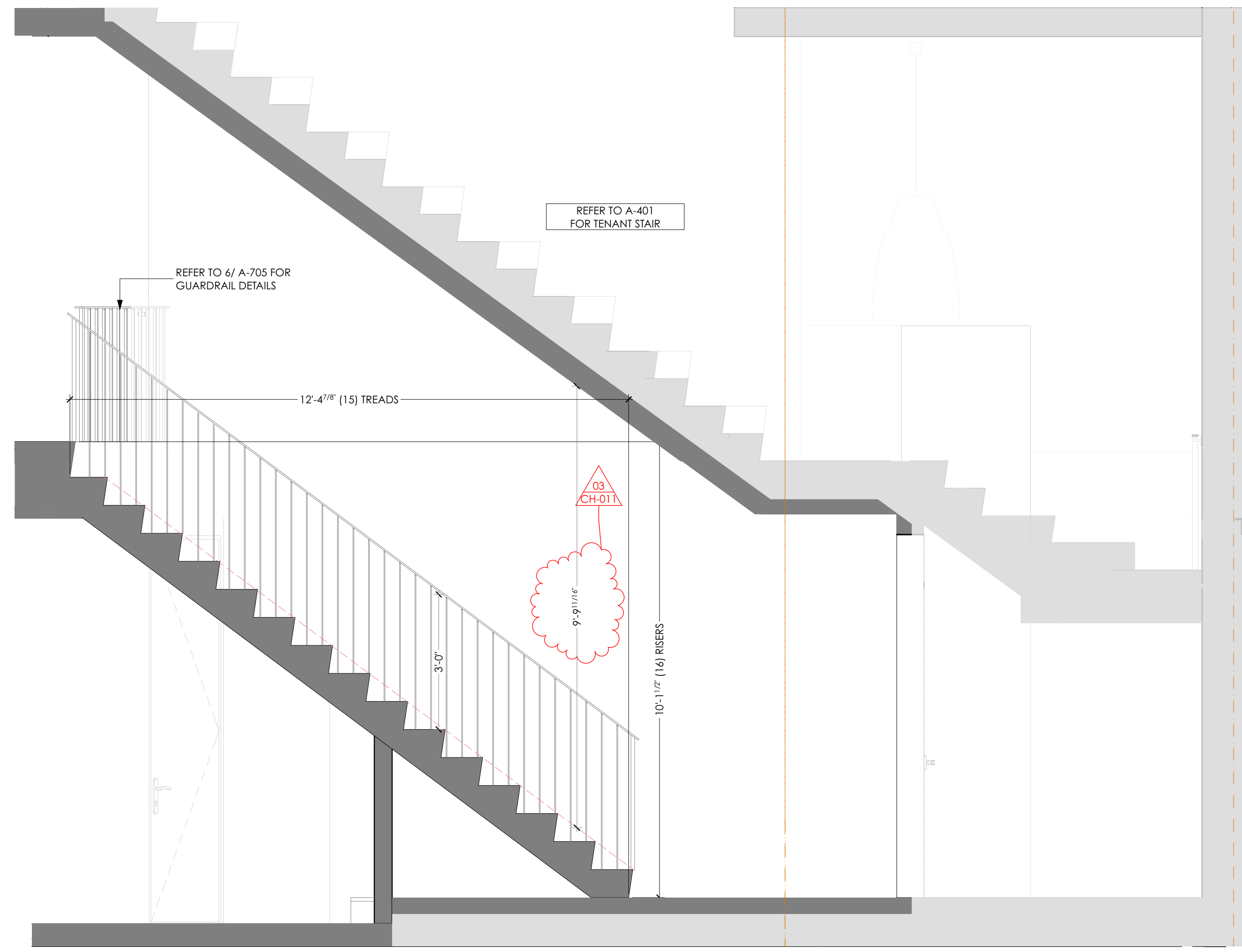


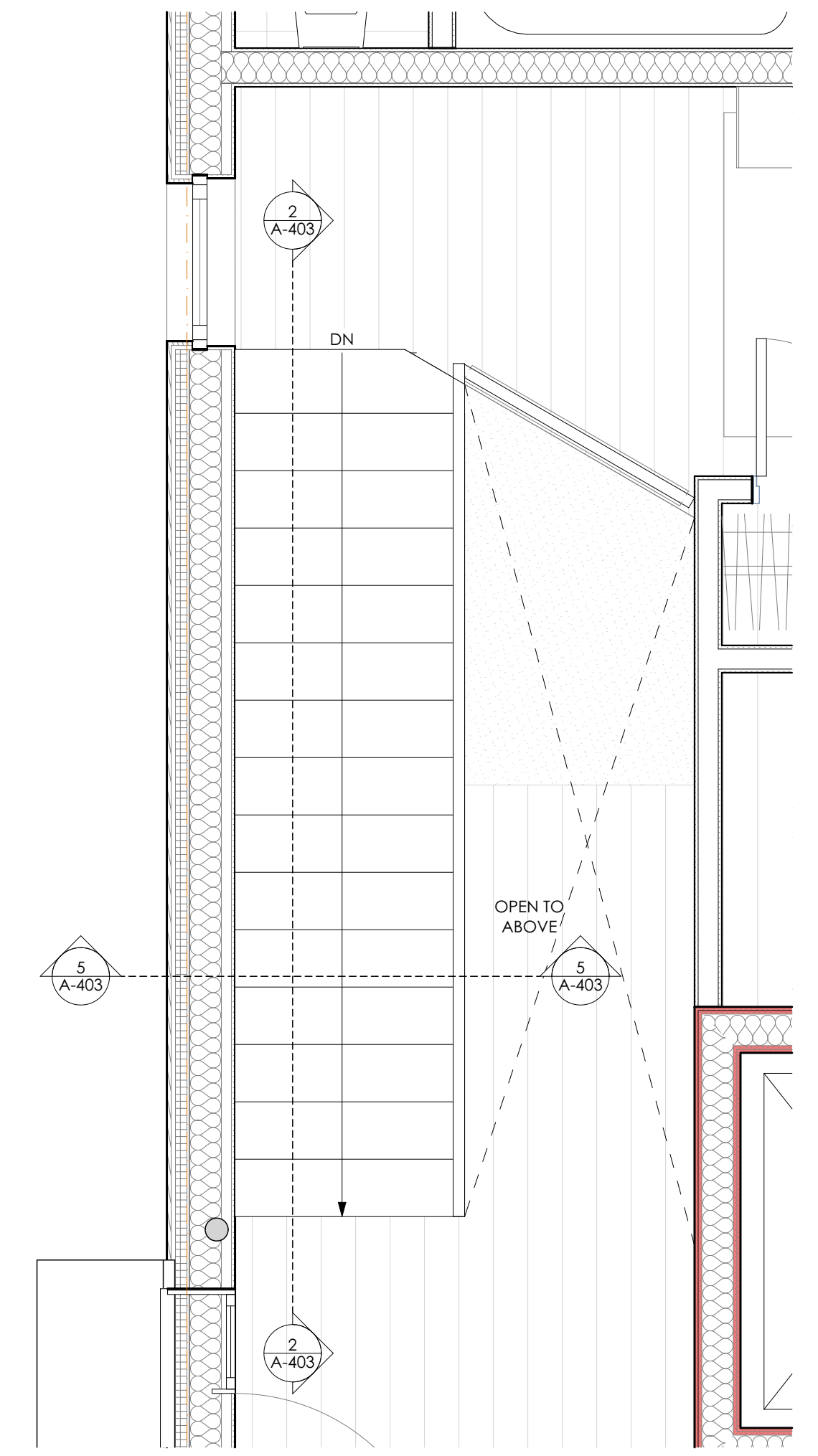
3 STAIR BASE SECTION DETAIL  
SCALE: 1 1/2" = 1'-0"



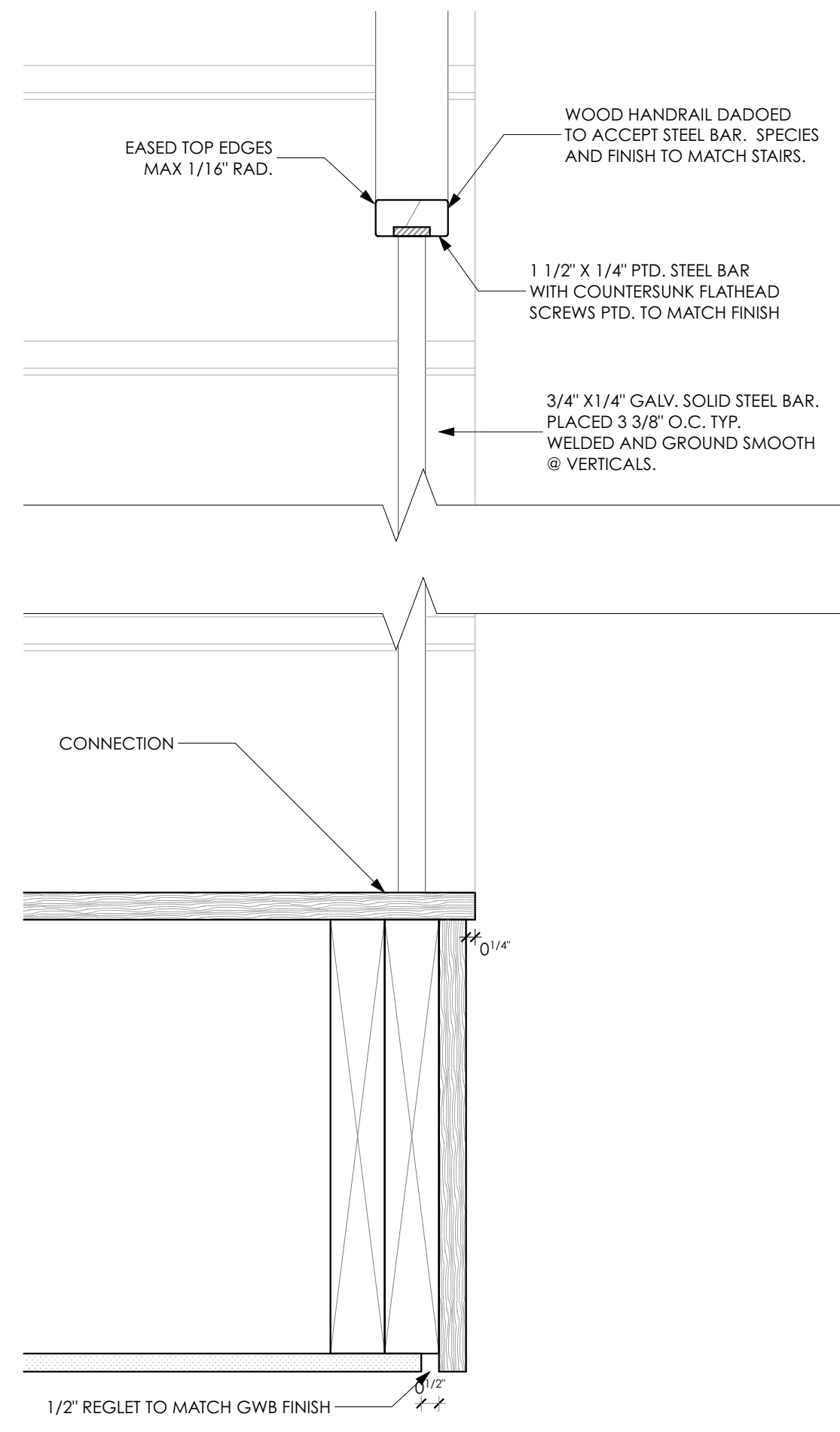
2 TENANT STAIR SECTION  
SCALE: 1/2" = 1'-0"



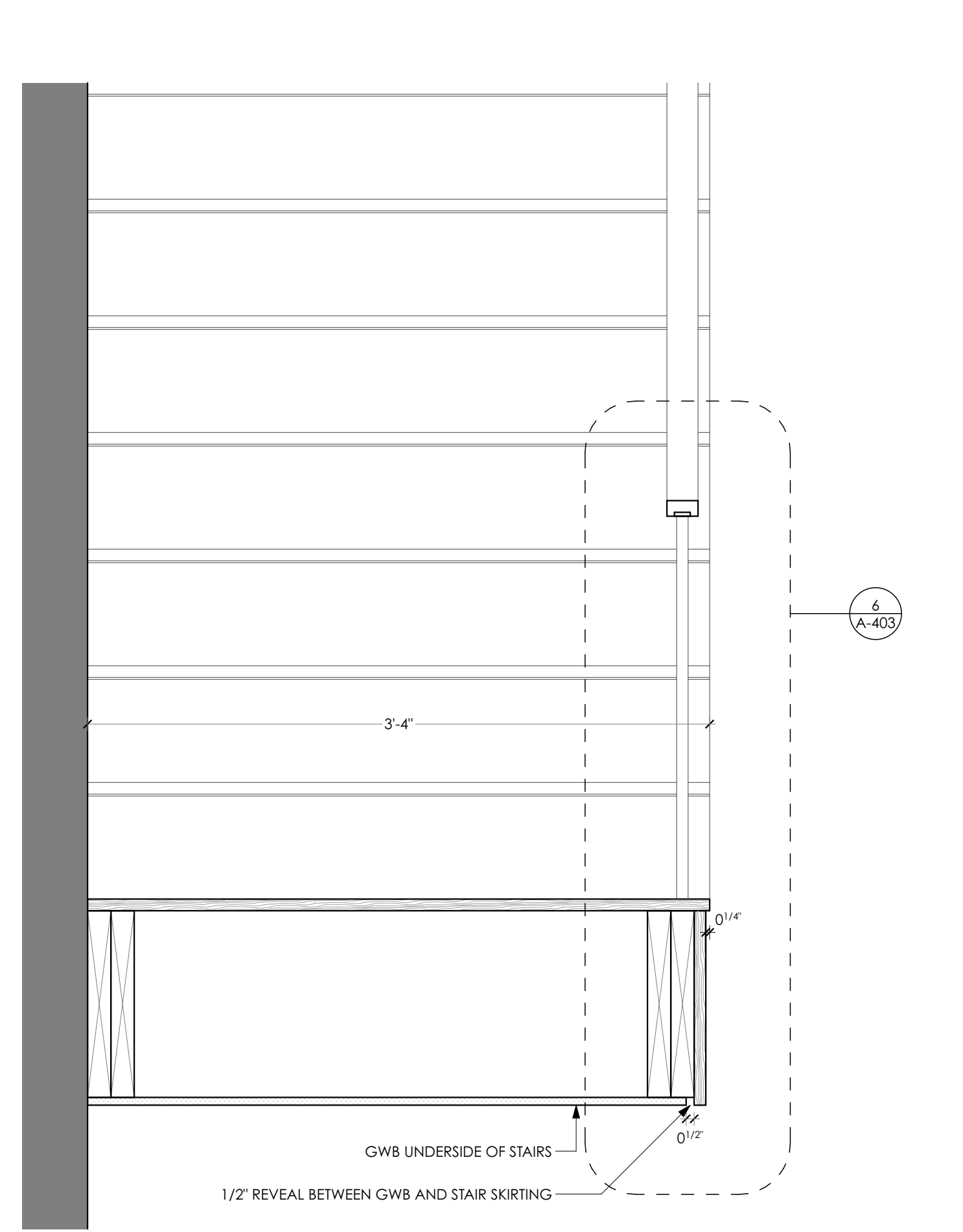
1 TENANT STAIR PLAN  
SCALE: 1/2" = 1'-0"



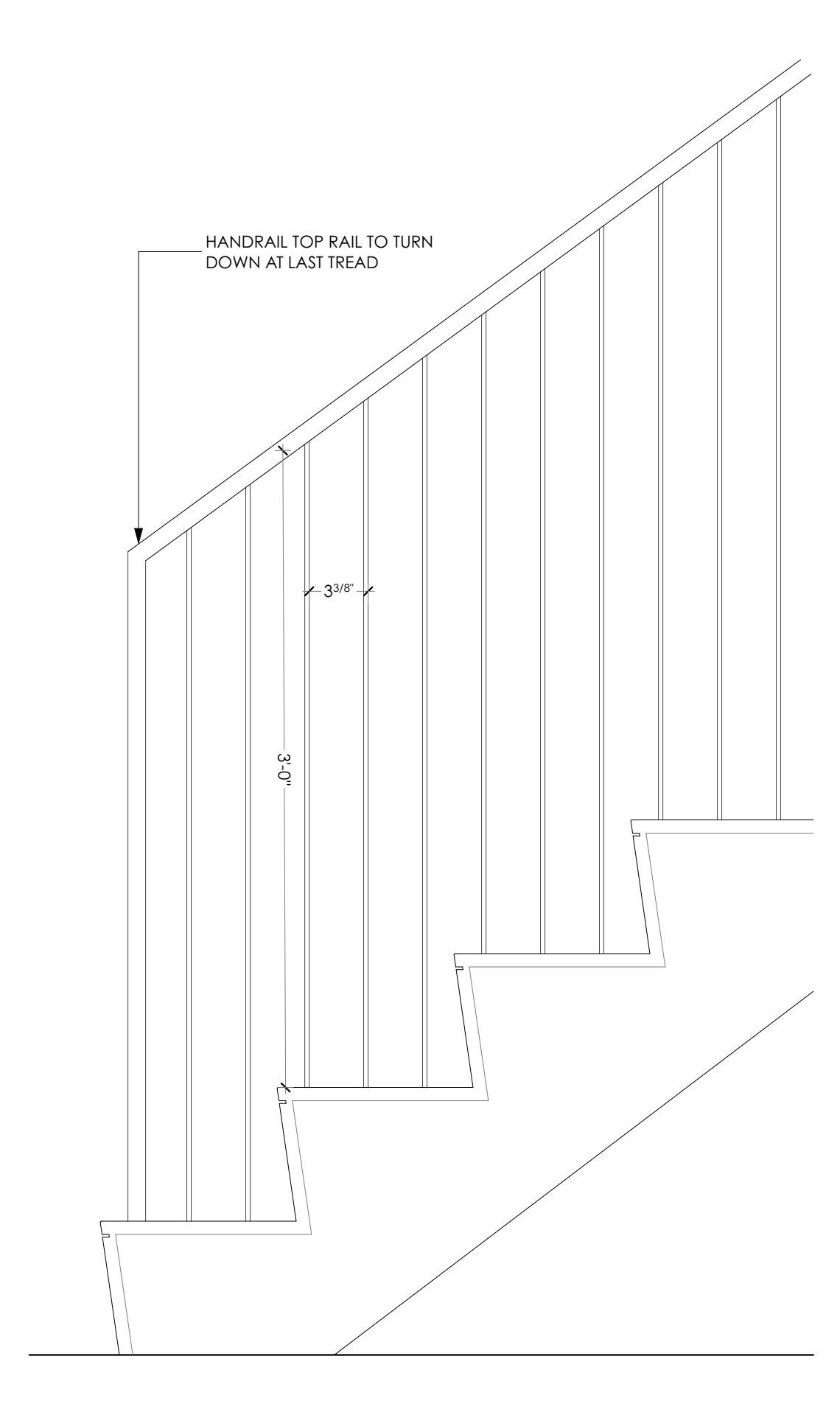
6 HANDRAIL SECTION DETAIL  
SCALE: 3" = 1'-0"



5 STAIR CROSS SECTION  
SCALE: 1 1/2" = 1'-0"



4 STAIR ELEVATION  
SCALE: 1 1/2" = 1'-0"



ISSUE NUMBER

ISSUE NUMBER	DATE	DESCRIPTION
1	04/11/2018	City Use Safety Comments #1
2	04/17/2018	City Use Safety Comments #2
3		
4		
5		
6		

CHANGES THIS ISSUE

03-511 Stair Modification

FOR CONSTRUCTION

ARCHITECT: CALEB JOHNSON  
DRAFTSPERSON: JULIA BRADY  
PROJECT STATUS: 95% CDS FOR BID

Brady Residence  
Jim and Julia Brady  
9 Moody Street Portland ME 04101