



Ann Machado <amachado@portlandmaine.gov>

Cross section Paul Cooper updated -

1 message

asmartmaine@yahoo.com <asmartmaine@yahoo.com>
Reply-To: "asmartmaine@yahoo.com" <asmartmaine@yahoo.com>
To: Ann Machado <amachado@portlandmaine.gov>

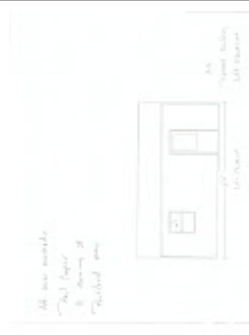
Fri, Jan 26, 2018 at 12:40 PM

Ann,

Please disregard roof trusses now that it will be a 4/12 pitch . Also disregard the pull down stairs.

Thanks

Leroy Smart



Cooper P A8 001.bmp
11645K