

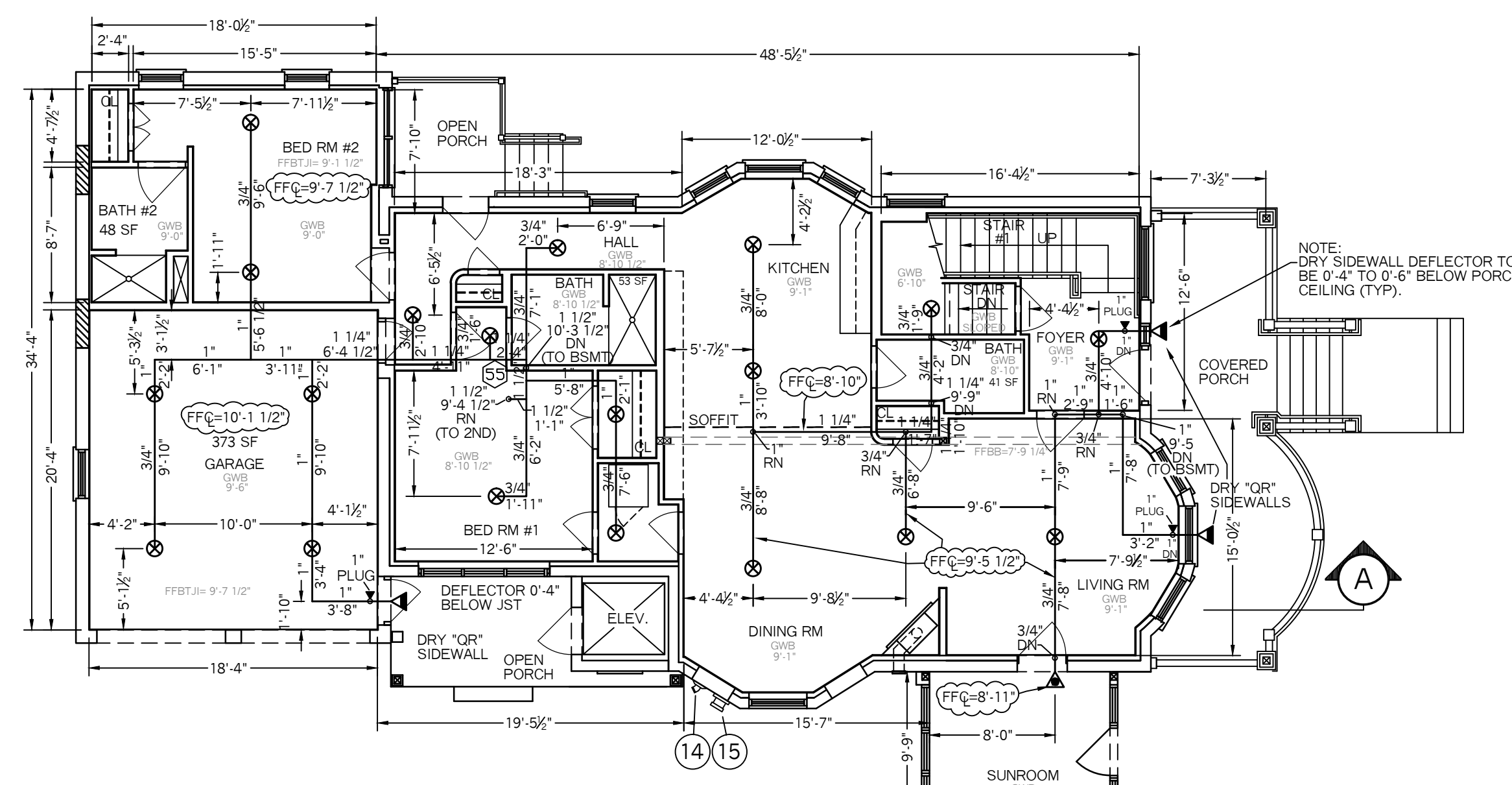
SECOND FLOOR PLAN

SCALE: 1/8" = 1'-0"
FLR ELEV: 18.38'
TOTAL FLR AREA= 1,376 SF

SPRINKLER HEAD INFORMATION, FOR THIS FLOOR ONLY

QTY	SIZE	ORIFICE	K-FACTOR	DESCRIPTION	MODEL	TEMP	ESCUITCHEON	SYMBOL
21	1/2"	7/16"	4.9	VIKING WHITE RESIDENTIAL PENDENT	VK494	155	CONCEALED	☉
1	1/2"	7/16"	4.0	VIKING WHITE RESIDENTIAL SIDEWALL	VK486	155	RECESSED	◀
3	1/2"	1/2"	5.6	VIKING WHITE "OR" DRY SIDEWALL	VK188	155	RECESSED	◀

TOTAL HD'S= 25



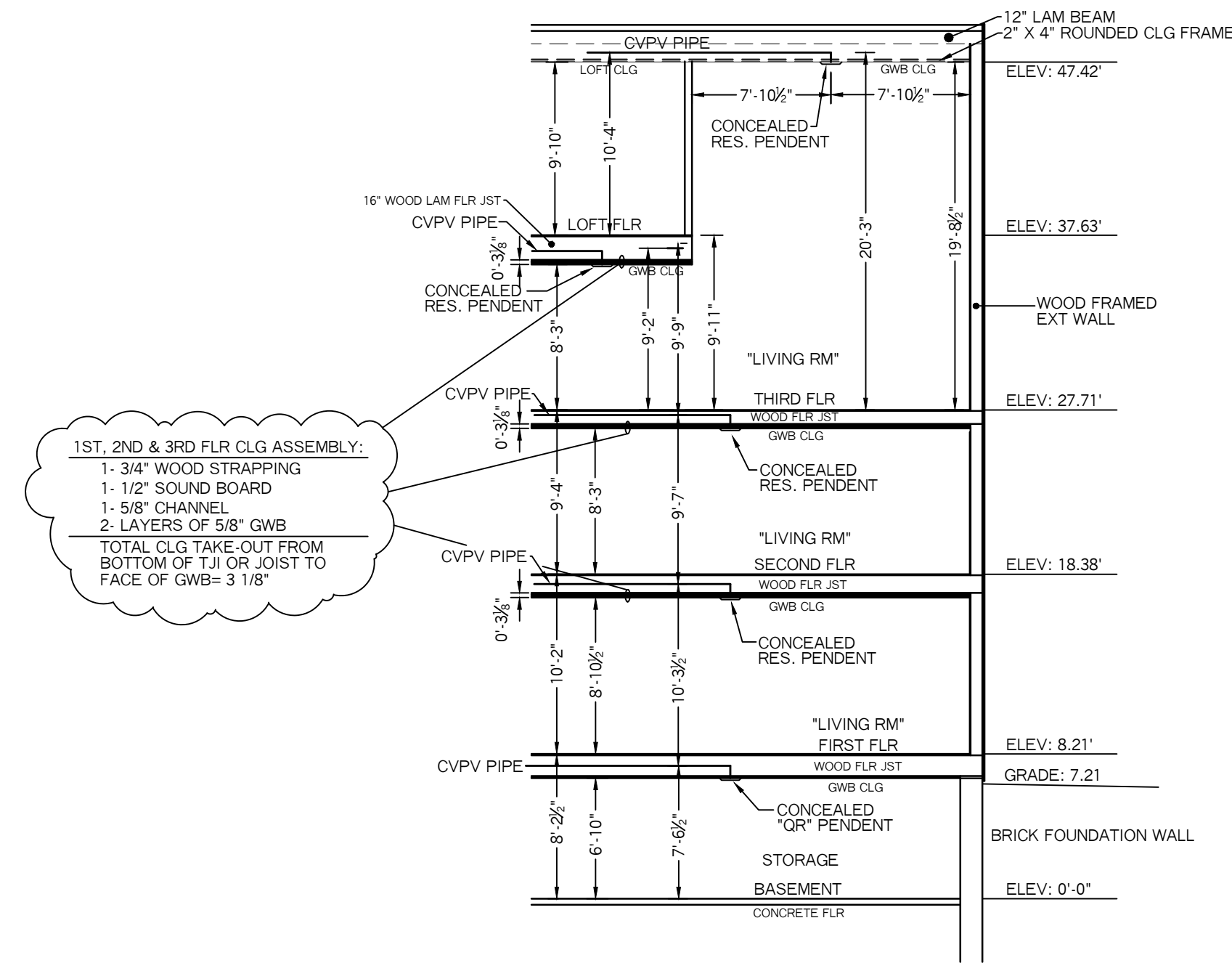
FIRST FLOOR PLAN

SCALE: 1/8" = 1'-0"
FLR ELEV: 8.21'
TOTAL FLR AREA= 2,013 SF

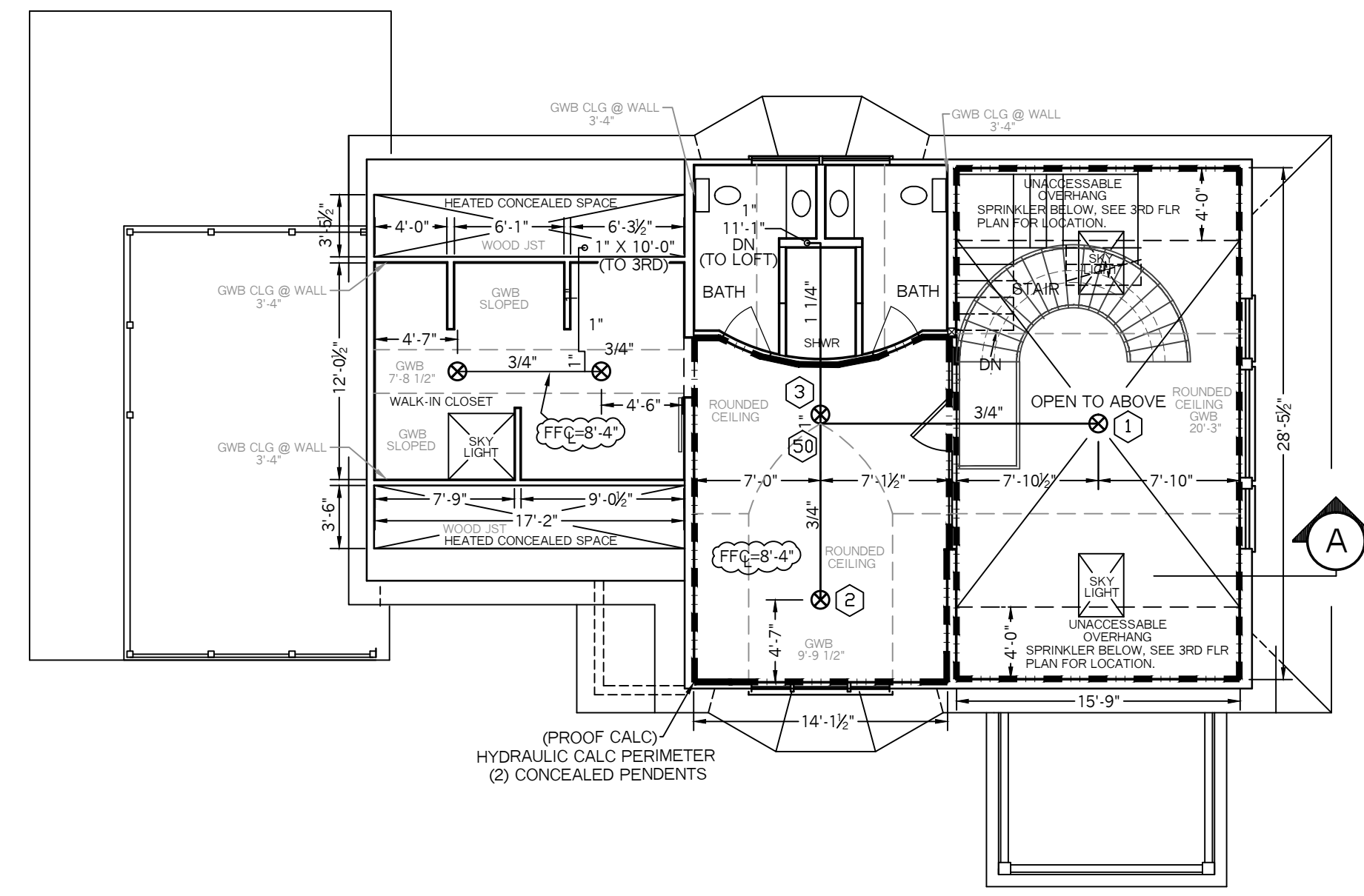
SPRINKLER HEAD INFORMATION, FOR THIS FLOOR ONLY

QTY	SIZE	ORIFICE	K-FACTOR	DESCRIPTION	MODEL	TEMP	ESCUITCHEON	SYMBOL
19	1/2"	7/16"	4.9	VIKING WHITE RESIDENTIAL PENDENT	VK494	155	CONCEALED	☉
1	1/2"	7/16"	4.0	VIKING WHITE RESIDENTIAL SIDEWALL	VK486	155	RECESSED	◀
3	1/2"	1/2"	5.6	VIKING WHITE "OR" DRY SIDEWALL	VK188	155	RECESSED	◀

TOTAL HD'S= 23



BUILDING SECTION -A-
N.T.S.



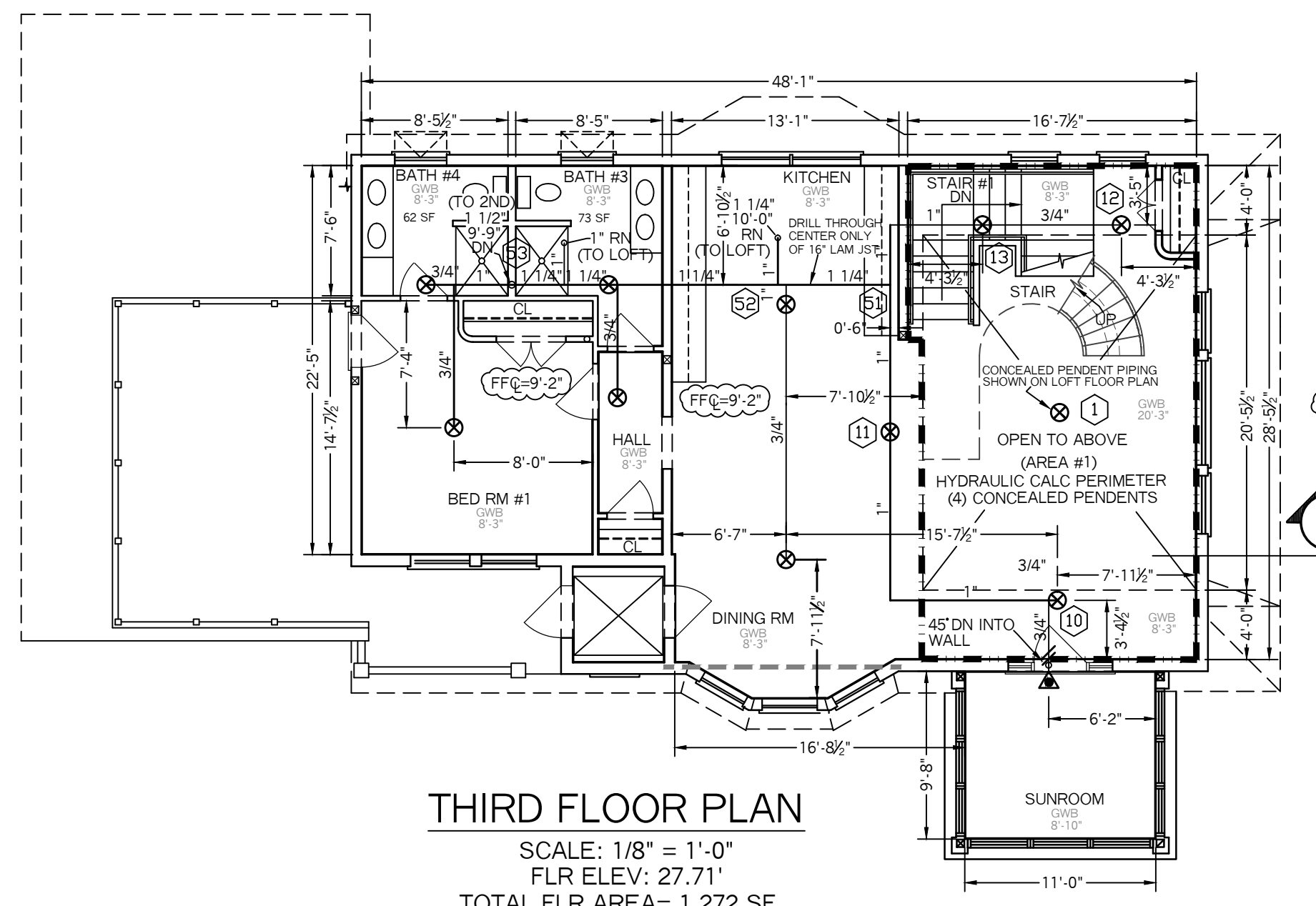
LOFT FLOOR PLAN

SCALE: 1/8" = 1'-0"
FLR ELEV: 37.63'
TOTAL FLR AREA= 947 SF

SPRINKLER HEAD INFORMATION, FOR THIS FLOOR ONLY

QTY	SIZE	ORIFICE	K-FACTOR	DESCRIPTION	MODEL	TEMP	ESCUITCHEON	SYMBOL
5	1/2"	7/16"	4.9	VIKING WHITE RESIDENTIAL PENDENT	VK494	155	CONCEALED	☉

TOTAL HD'S= 5



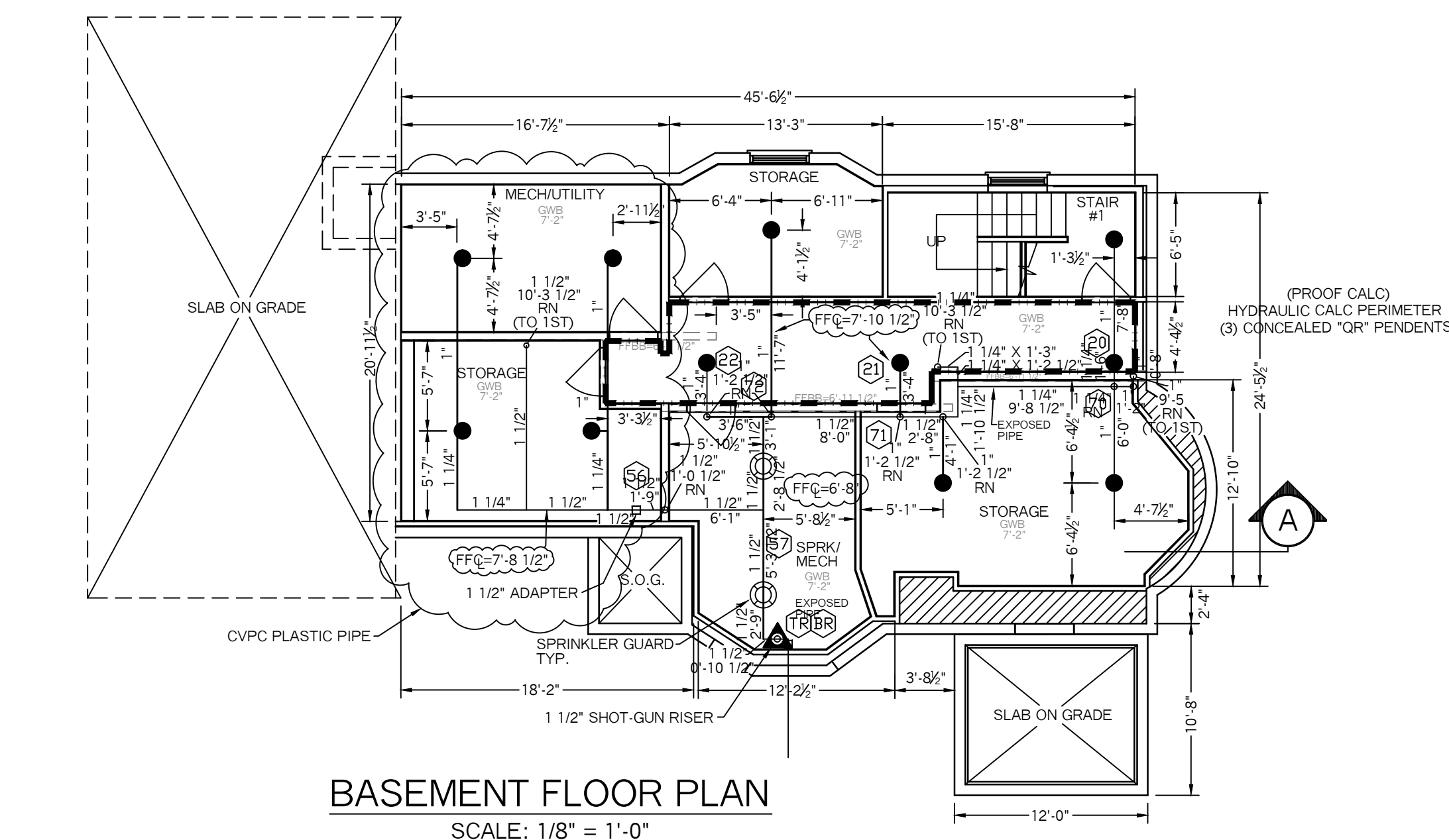
THIRD FLOOR PLAN

SCALE: 1/8" = 1'-0"
FLR ELEV: 27.71'
TOTAL FLR AREA= 1,272 SF

SPRINKLER HEAD INFORMATION, FOR THIS FLOOR ONLY

QTY	SIZE	ORIFICE	K-FACTOR	DESCRIPTION	MODEL	TEMP	ESCUITCHEON	SYMBOL
10	1/2"	7/16"	4.9	VIKING WHITE RESIDENTIAL PENDENT	VK494	155	CONCEALED	☉
1	1/2"	7/16"	4.0	VIKING WHITE RESIDENTIAL SIDEWALL	VK486	155	RECESSED	◀

TOTAL HD'S= 11



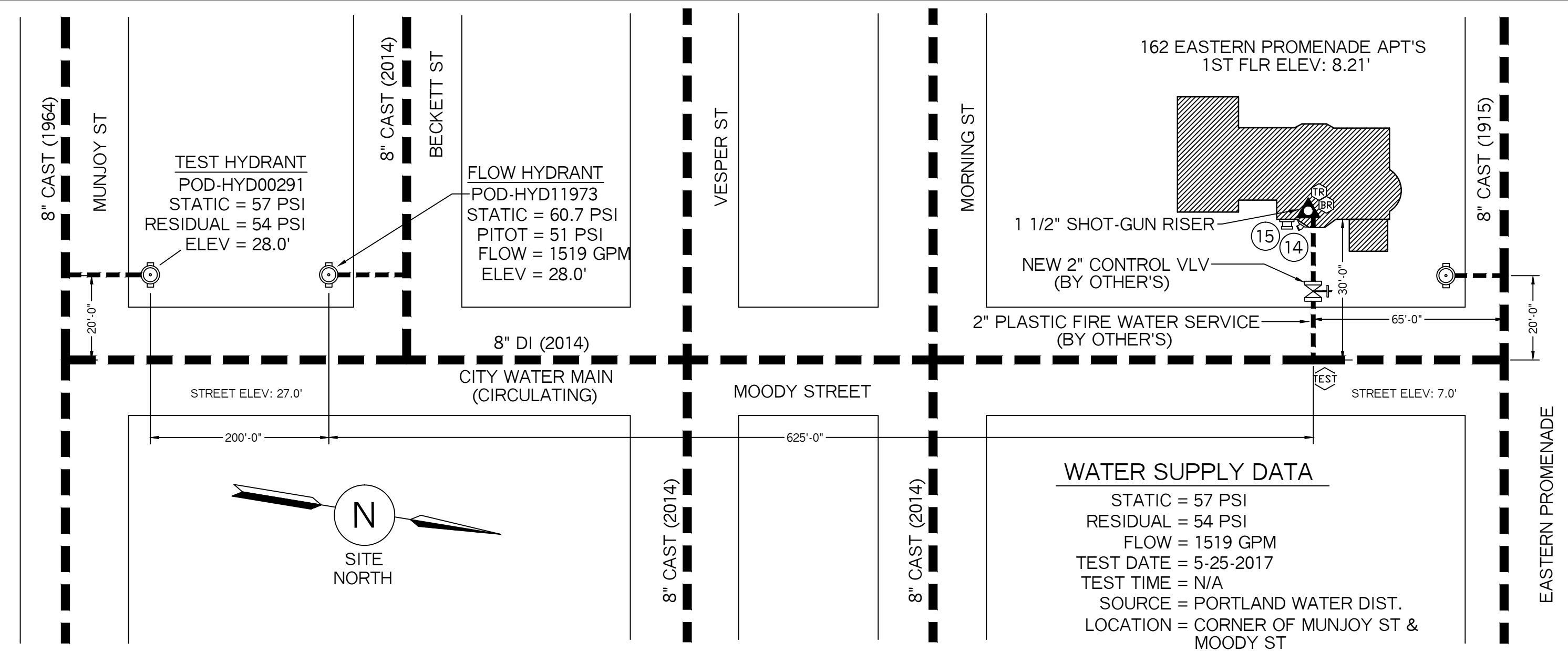
BASEMENT FLOOR PLAN

SCALE: 1/8" = 1'-0"
FLR ELEV: 0.0'
TOTAL FLR AREA= 1,123 SF

SPRINKLER HEAD INFORMATION, FOR THIS FLOOR ONLY

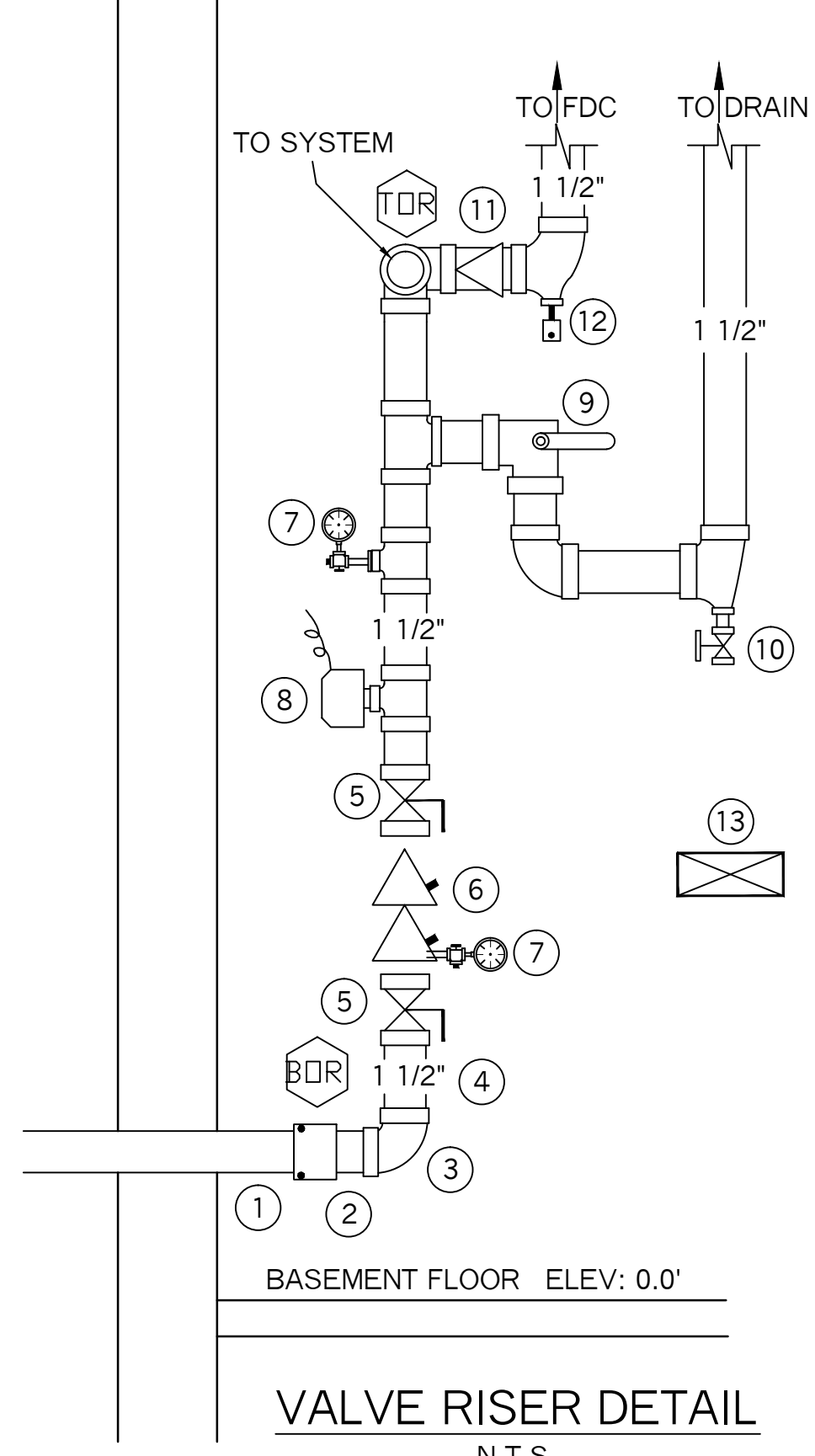
QTY	SIZE	ORIFICE	K-FACTOR	DESCRIPTION	MODEL	TEMP	ESCUITCHEON	SYMBOL
11	1/2"	1/2"	5.6	VIKING WHITE "OR" PENDENTS	VK462	155	CONCEALED	☉
2	1/2"	1/2"	5.6	VIKING BRASS "OR" UPRIGHT	VK300	155	NONE	○

TOTAL HD'S= 13



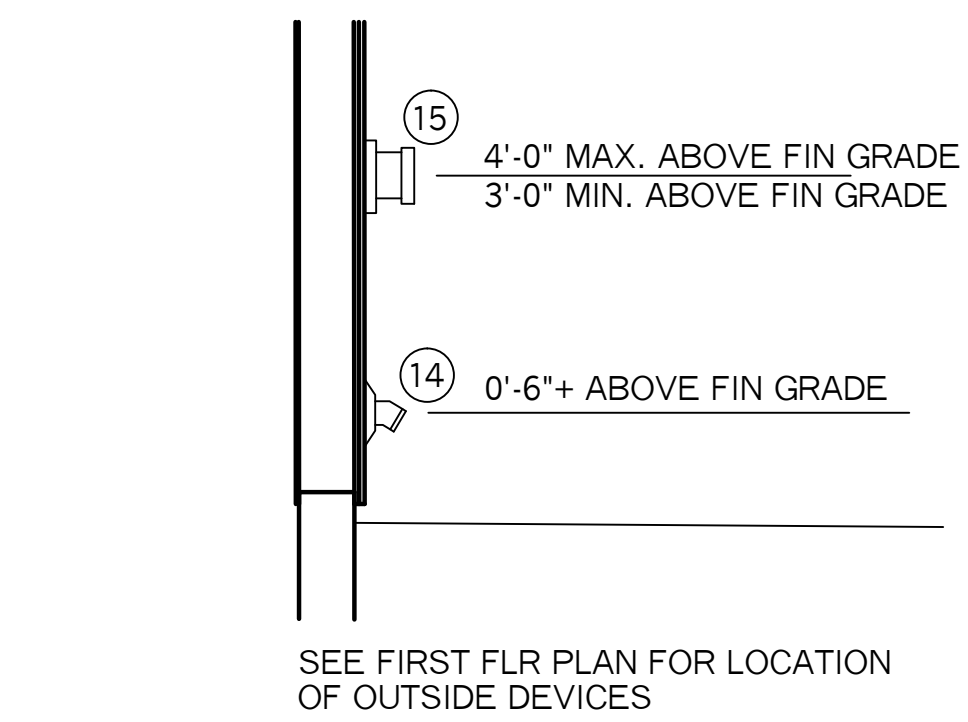
PLOT / SITE PLAN
SCALE: N.T.S.

WATER SUPPLY DATA
STATIC = 57 PSI
RESIDUAL = 54 PSI
FLOW = 1519 GPM
TEST DATE = 5-25-2017
TEST TIME = N/A
SOURCE = PORTLAND WATER DIST.
LOCATION = CORNER OF MUNJOY ST & MOODY ST

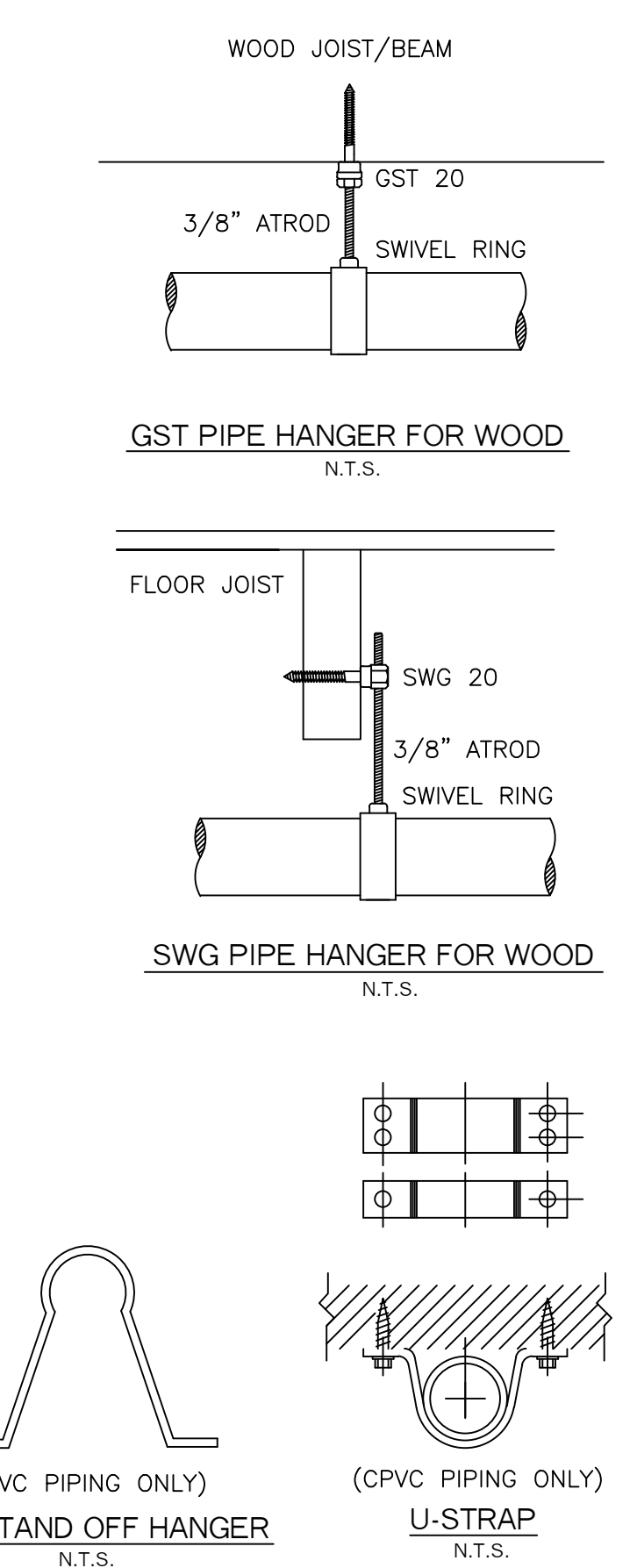


VALVE RISER DETAIL
N.T.S.

- VALVE RISER LEGEND**
- 2" CTS PLASTIC U.G. SPIGOT (BY OTHER'S)
 - 2" FORD ADAPTOR (BY OTHER'S)
 - 2" X 1 1/2" RED BUSH. (NON-CORROSIVE)
 - 1 1/2" FILLER PC (NON-CORROSIVE)
 - 1 1/2" SUT-OFF VALVES, W/ SEALED OPEN (N.O.)
 - 1 1/2" AMES "2000B" DOUBLE CHECK BACKFLOW PREVENTER
 - WATER PRESSURE GAUGE (3.5" DIA.)
 - POTTER VSR-S VANE TYPE FLOW SWITCH (WIRE FLOW SWITCH TO ALARM SYSTEM BY OTHER'S)
 - 1 1/2" TEST AND DRAIN VALVE W/ PRESSURE RELIEF VLV (N.C.) (7/16" TEST ORIFICE) (LARGE DRAIN VALVE TO ALLOW FULL FLOW FOR BFP TESTING)
 - 1/2" AUXILIARY DRAIN (LOW POINT) (N.C.)
 - 1 1/2" CHECK VALVE
 - 1/2" AUTOMATIC BALL DRIP
 - SPARE HEAD BOX, 6 HD CAPACITY W/ WRENCH
 - 1" GALV. 45 ELBOW W/ GALV. GRINNELL PLATE (MAIN DRAIN)
 - 2 1/2" SINGLE FDC W/ WALL PLATE, CAP & CHAIN



EXTERIOR SPRINKLER COMPONENTS
N.T.S.



HANGER DETAILS
N.T.S.

HYDRAULIC CALCULATION INFORMATION

LOCATION: THIRD FLR (AREA #1)

BASIS OF DESIGN: NFPA 13R, 2016 EDITION

DENSITY: 4
AREA OF COVERAGE: 1/2" 7/16" 155
(4) RES. SPRK'S

OCCUPANCY: BASEMENT

SPRINKLERS:	TOTAL	THRD	ORIFICE	TEMP
	4	1/2"	7/16"	155

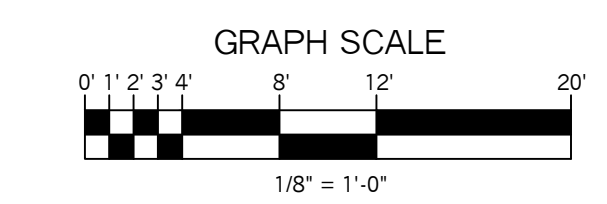
SYSTEM DEMAND AT BASE OF RISER (BGR):

PRESSURE	FLOW	HOSE
44.68 PSI	58.7 GPM	0

SAFETY MARGIN: 12.31 PSI

SYSTEM GENERAL NOTES:

- A WET PIPE SYSTEM OF AUTOMATIC SPRINKLERS DESIGNED, INSTALLED AND TESTED PER NFPA 13R (2016 EDITION) AND STATE/LOCAL REQUIREMENTS.
- NEW 2" BLU-BRUTE PLASTIC UNDERGROUND SPRINKLER WATER LINE TO BE INSTALLED, TESTED AND FLUSHED BY OTHER'S IN ACCORDANCE WITH NFPA 24 AND LOCAL CODES.
- RESIDENTIAL FIRE PROTECTION TO START AT THE END OF THE NEW 2" BLU-BRUTE PLASTIC UNDERGROUND LINE IN THE BASEMENT.
- 1 1/2" SHOT-GUN VALVE RISER WITH AN 1 1/2" AMES "2000B" DOUBLE CHECK BACKFLOW
- CVPV PIPE AND FITTINGS TO BE USED THROUGHOUT THE ENTIRE BUILDING UNLESS OTHERWISE NOTED.
- PIPE TO BE INSTALLED ABOVE CEILINGS CONCEALED FROM VIEW WITH WHITE CONCEALED RESIDENTIAL PENDENT HEADS INSTALLED ON DROPS.
- PIPE TO BE INSTALLED ABOVE CEILINGS CONCEALED FROM VIEW IN THE BASEMENT WITH WHITE "OR" CONCEALED SPRINKLERS.
- EXPOSED PIPE SHALL BE BLACK STEEL PIPE AND FITTINGS (BASEMENT LEVEL) WITH "OR" UPRIGHT SPRINKLERS ON LINE WITH PROTECTIVE GUARDS.



SYSTEM SYMBOL LEGEND:

- ◻ = WET SHOT-GUN RISER
- ☉ = HYDRANT
- ☉ = SPRINKLER GUARD
- ◻ = ADAPTOR
- = HYDRAULIC CALC REF PT
- ⊥ = DRAIN VALVE
- = PLUG
- N.O. = NORMALLY OPEN
- N.C. = NORMALLY CLOSED
- N.I.C. = NOT IN CONTRACT
- LPD = LOW POINT DRAIN
- S.O.G. = SLAB ON GRADE

NFPA 13R NOTES:

- SPRINKLERS SHALL BE INSTALLED IN ALL AREA'S EXCEPT THE FOLLOWING:
- 1.) BATHROOMS WHERE THE AREA DOES NOT EXCEED 55 SF
- 2.) CLOTHES CLOSETS, LINEN CLOSETS AND PANTRIES THAT MEET THE FOLLOWING CONDITIONS:
 - THE AREA OF THE SPACE DOES NOT EXCEED 24 SF
 - THE LEAST DIMENSION DOES NOT EXCEED 3'-0"
 - THE WALLS AND CEILINGS ARE SURFACED WITH NON-COMBUSTIBLE OR LIMITED COMBUSTIBLE MATERIALS.
- * SPRINKLERS SHALL BE INSTALLED IN ANY CLOSET USED FOR HEATING OR AIR CONDITIONING EQUIPMENT
- 3.) PORCHES, BALCONIES, CORRIDORS AND STAIRS THAT ARE OPEN AND ATTACHED
- 4.) ATTICS, PENTHOUSES, EQUIPMENT ROOMS, ELEVATOR MACHINE ROOMS, CONCEALED SPACES DEDICATED EXCLUSIVELY TO AND CONTAINING ONLY DWELLING UNIT VENTILATION EQUIPMENT, CRAWL SPACES, FLOOR/CEILING SPACES, NON-COMBUSTIBLE ELEVATOR SHAFTS WITH THE CAR IN COMPLIANCE WITH ANSI A17.1 "SAFETY CODE FOR ELEVATORS" AND OTHER CONCEALED SPACES THAT ARE NOT USED OR INTENDED FOR LIVING PURPOSES OR STORAGE AND DO NOT CONTAIN FUEL FIRED EQUIPMENT
- 5.) CLOSETS ON EXTERIOR BALCONIES, REGARDLESS OF SIZE, AS LONG AS THERE ARE NO DOORS OR UNPROTECTED PENETRATIONS FROM THE CLOSET DIRECTLY INTO THE DWELLING UNIT.

PROJECT NAME: 162 EASTERN PROMENADE APT'S 162 EASTERN PROMENADE PORTLAND, ME. 04101	FIRE SPRINKLER PLANS AND DETAILS REQUIRED APPROVALS: STATE FIRE MARSHALS OFFICE LOCAL FIRE DEPARTMENT OWNER	RESIDENTIAL FIRE PROTECTION, LLC
CONTRACT WITH: CRANDALL TOOTHAKER (OWNER) PH: (207) 797-6066	DRAWN BY: TPP NICET III (100854) CERTIFICATION # 78065	DATE: 2-19-2018 SCALE: 1/8" = 1'-0"
RESIDENTIAL FIRE PROTECTION 64 DAGGETT HILL ROAD, GREENE, MAINE 04236 PH: (207) 946-3473 FAX: (207) 946-3474	CHECKED BY: SJC NICET III (100854) CERTIFICATION # 78065	CONTRACT NO. C18006 DRAWING NO. 1 OF 1
CONTRACTOR LICENSE #511 CONTRACTOR RMS #80		