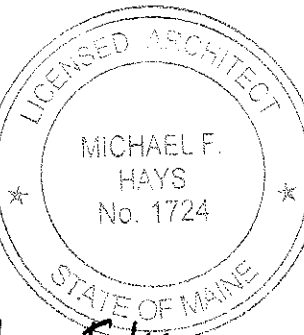


GRANT HAYS
ASSOCIATES

ARCHITECTURE & INTERIOR DESIGN
P.O. BOX 6179 FALMOUTH MAINE 04105
207.871.5900 www.granthays.com

SEAL



Michael F. Hays
REV/10/15

12.24.2015

PROJECT NAME

3 UNIT APARTMENT BUILDING
162 EASTERN PROMENADE
162 EASTERN PROMENADE LLC.
162 EASTERN PROMENADE
PORTLAND, MAINE 04101

SHEET

BUILDING SECTION

DATE
19 OCT 2015

SCALE
1/4" = 1'-0"

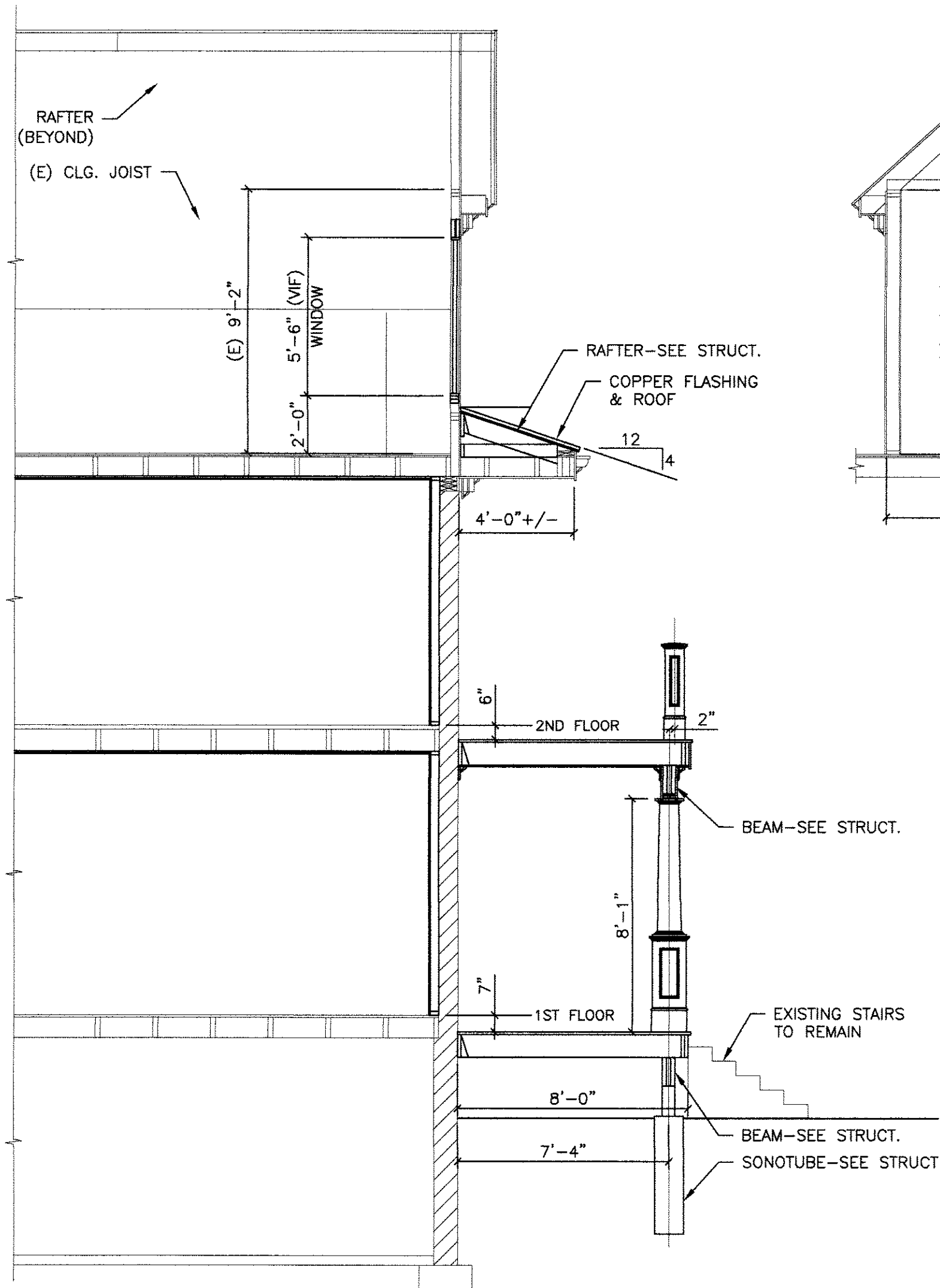
DRAWN
JAM/MFH

JOB NO.
150815

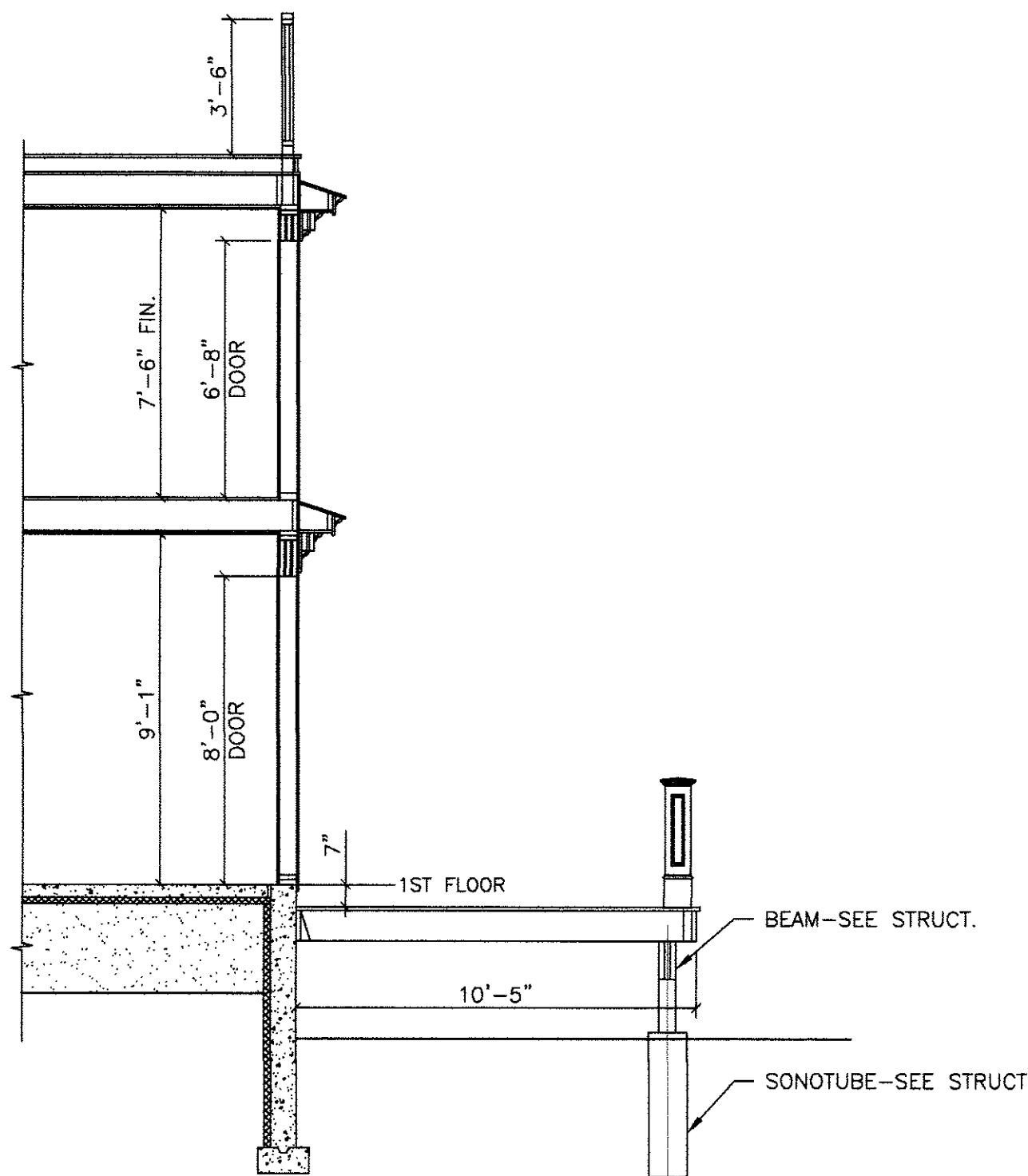
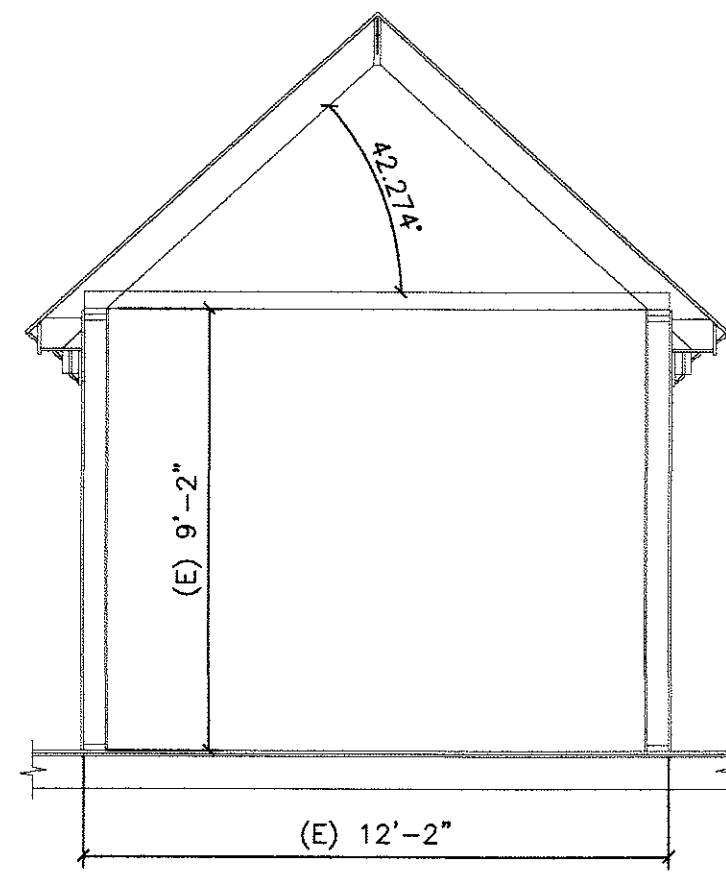
SHEET

A9

COPYRIGHT
REPRODUCTION OR REVUE OF THIS
DOCUMENT WITHOUT WRITTEN
PERMISSION FROM GRANT HAYS
ASSOCIATES IS PROHIBITED.

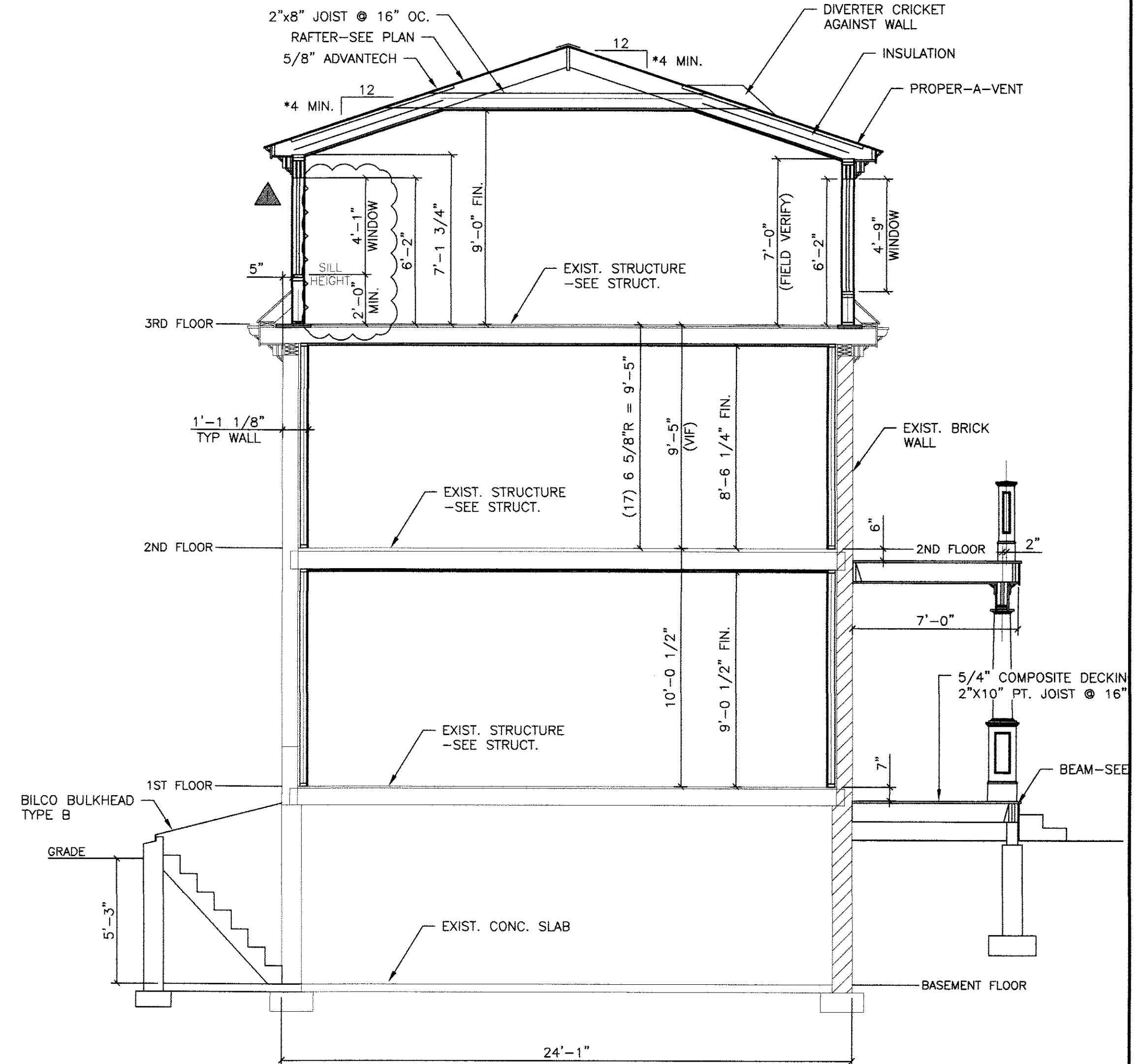


SECTION
SCALE: 1/4" = 1'-0"



SECTION
SCALE: 1/4" = 1'-0"

* FINISH FLOOR TO WINDOW SILL OPENING SHALL BE 24" MINIMUM ABOVE FINISH FLOOR. GC. SHALL FIELD VERIFY W/WINDOW MANUFACTURER'S PRODUCT DATA.



SECTION
SCALE: 1/4" = 1'-0"

